

Product datasheet

Donkey Anti-Rabbit IgG H&L (HRP) ab6802

[114 References](#) [5 Images](#)

Overview

Product name	Donkey Anti-Rabbit IgG H&L (HRP)
Host species	Donkey
Target species	Rabbit
Tested applications	Suitable for: WB, ELISA, Immunomicroscopy, Dot blot, ICC/IF, IHC-P, IHC-Fr
Immunogen	Rabbit IgG, whole molecule
Conjugation	HRP

Properties

Form	Liquid
Storage instructions	Shipped at 4°C. Store at +4°C.
Storage buffer	pH: 6.50 Preservative: 0.01% Gentamicin sulphate Constituents: 0.42% Tripotassium orthophosphate, 0.87% Sodium chloride, 1% BSA
Purity	Affinity purified
Purification notes	This product was prepared from monospecific antiserum by immunoaffinity chromatography using Rabbit IgG coupled to agarose beads.
Clonality	Polyclonal
Isotype	IgG

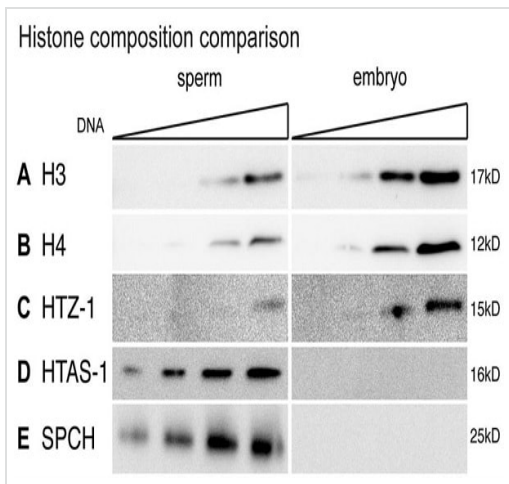
Applications

The Abpromise guarantee Our **Abpromise guarantee** covers the use of ab6802 in the following tested applications. The application notes include recommended starting dilutions; optimal dilutions/concentrations should be determined by the end user.

Application	Abreviews	Notes
WB		1/1000 - 1/3000.
ELISA		1/160000.

Application	Abreviews	Notes
Immunomicroscopy		Use at an assay dependent concentration.
Dot blot		Use at an assay dependent concentration.
ICC/IF		1/500 - 1/2000.
IHC-P		1/500 - 1/2000.
IHC-Fr		1/500 - 1/2000.

Images



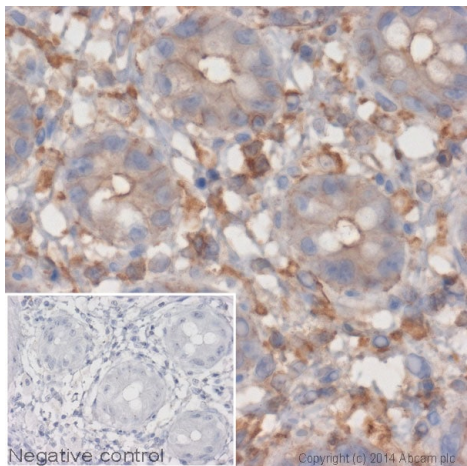
Canonical histones are retained in *C. elegans* sperm.

A–E) Western blot analysis of sperm and embryo lysates loaded with equivalent amounts of DNA.

For full details please see paper.

Western blot - Donkey Anti-Rabbit IgG H&L (HRP) (ab6802)

Samson et al PLoS Genet. 2014 Oct 9;10(10):e1004588. doi: 10.1371/journal.pgen.1004588. eCollection 2014 Oct. Fig 1. Reproduced under the Creative Commons license <http://creativecommons.org/licenses/by/4.0/>



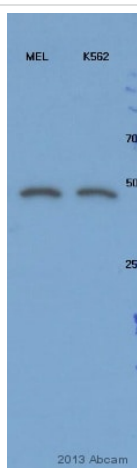
Immunohistochemistry (Formalin/PFA-fixed paraffin-embedded sections) - Donkey Anti-Rabbit IgG H&L (HRP) (ab6802)

IHC image of beta actin staining in human colon formalin fixed paraffin embedded tissue section*.

The section was pre-treated using pressure cooker heat mediated antigen retrieval with sodium citrate buffer (pH 6) for 30 mins. The section was incubated with **ab8227**, 5 µg/ml overnight at +4°C. An HRP-conjugated secondary (ab6802, 1/2,000 dilution) was used for 1 hr at room temperature. The section was counterstained with hematoxylin and mounted with DPX.

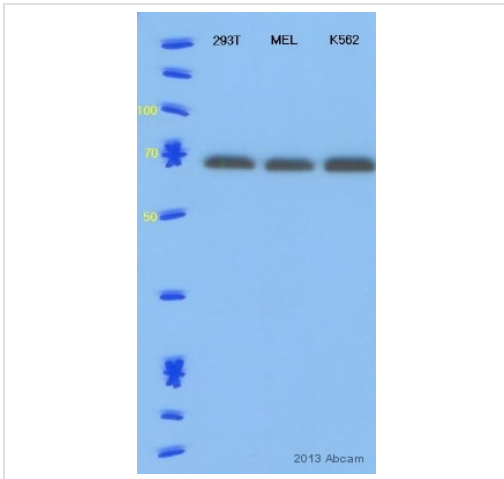
The inset **negative control** image is secondary-only at 1/500 dilution.

*Tissue obtained from the Human Research Tissue Bank, supported by the NIHR Cambridge Biomedical Research Centre



Western blot - Donkey Anti-Rabbit IgG H&L (HRP) (ab6802)

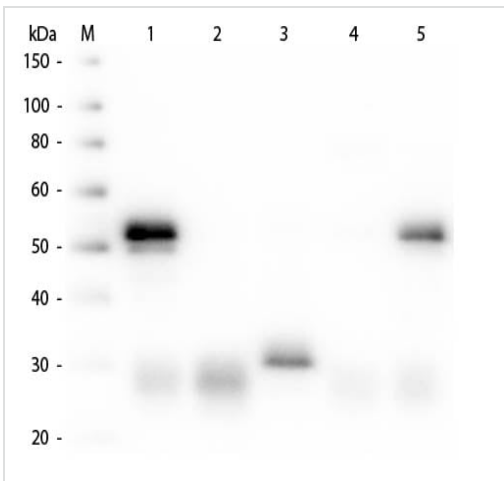
This image is courtesy of an anonymous Abreview.



Western blot - Donkey Anti-Rabbit IgG H&L (HRP)

(ab6802)

This image is courtesy of an Abreview submitted by Min young Kim



Western blot - Donkey Anti-Rabbit IgG H&L (HRP)

(ab6802)

Western blot - Donkey Anti-Rabbit IgG H&L (HRP) (ab6802)

Lane M: 3 μ l Molecular ladder.

Lane 1: Rabbit IgG whole molecule.

Lane 2: Rabbit IgG F(ab) fragment.

Lane 3: Rabbit IgG F(c) fragment.

Lane 4: Rabbit IgM whole molecule.

Lane 5: Normal rabbit serum.

All samples were reduced. Load: 50 ng per lane. Blocked for 30 min at RT.

ab6802 used at 1:5,000 for 60 min at RT. Secondary antibody: None. Predicted/Observed Size: 25 and 50 kDa for Rabbit IgG and Serum, 25 kDa for F(c) and F(ab), 70 and 23 kDa for IgM. Rabbit F(c) migrates slightly higher.

Please note: All products are "FOR RESEARCH USE ONLY. NOT FOR USE IN DIAGNOSTIC PROCEDURES"

Our Abpromise to you: Quality guaranteed and expert technical support

- Replacement or refund for products not performing as stated on the datasheet
- Valid for 12 months from date of delivery
- Response to your inquiry within 24 hours
- We provide support in Chinese, English, French, German, Japanese and Spanish
- Extensive multi-media technical resources to help you
- We investigate all quality concerns to ensure our products perform to the highest standards

If the product does not perform as described on this datasheet, we will offer a refund or replacement. For full details of the Abpromise,

please visit <https://www.abcam.com/abpromise> or contact our technical team.

Terms and conditions

- Guarantee only valid for products bought direct from Abcam or one of our authorized distributors