

## Product datasheet

# Donkey Anti-Sheep IgG H&L (DyLight® 650) ab96942

[1 References](#) [2 Images](#)

### Overview

<b>Product name</b>	Donkey Anti-Sheep IgG H&L (DyLight® 650)
<b>Host species</b>	Donkey
<b>Target species</b>	Sheep
<b>Specificity</b>	By immunoelectrophoresis and ELISA this antibody reacts specifically with Sheep IgG and with light chains common to other Sheep immunoglobulins. No antibody was detected against non immunoglobulin serum proteins.
<b>Tested applications</b>	<b>Suitable for:</b> Flow Cyt, IHC-P, ICC/IF
<b>Conjugation</b>	DyLight® 650. Ex: 654nm, Em: 673nm

### Properties

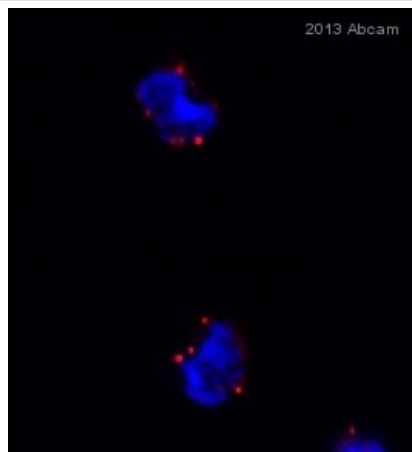
<b>Form</b>	Liquid
<b>Storage instructions</b>	Shipped at 4°C. Store at +4°C.
<b>Storage buffer</b>	pH: 6.8 Preservative: 0.09% Sodium azide Constituents: 0.2% BSA, PBS
<b>Purity</b>	Immunogen affinity purified
<b>Purification notes</b>	This antibody was isolated by affinity chromatography using antigen coupled to agarose beads and conjugated to DyLight® 650.
<b>Clonality</b>	Polyclonal
<b>Isotype</b>	IgG
<b>General notes</b>	DyLight® 650 replaces DyLight® 649.

### Applications

**The Abpromise guarantee** Our **Abpromise guarantee** covers the use of ab96942 in the following tested applications. The application notes include recommended starting dilutions; optimal dilutions/concentrations should be determined by the end user.

Application	Abreviews	Notes
Flow Cyt		1/50 - 1/200.
IHC-P		1/50 - 1/500. DyLight® 650 replaces DyLight® 649. The DyLight® 650 excitation is 652nm and the emission is 672nm. DyLight® 650 hence provides the same far-red fluorescence and photostability as the DyLight® 649 dye. Please refer to the vial in order to check whether the product you received is DyLight® 649 or DyLight® 650. This information however will have no impact on your
ICC/IF		1/50 - 1/500.

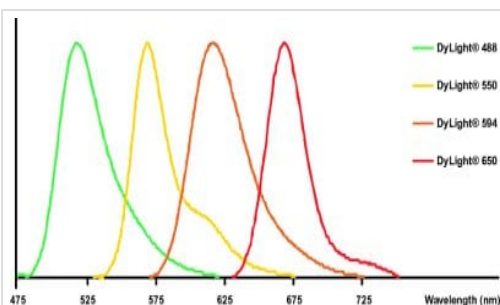
## Images



Immunocytochemistry/ Immunofluorescence -  
Donkey Anti-Sheep IgG H&L (DyLight® 650)  
(ab96942)

This image is courtesy of an Abreview submitted by Marcella Flores.

**ab62116** staining MAP1LC3A in mouse splinocytes by ICC/IF (Immunocytochemistry/immunofluorescence). Cells were fixed with paraformaldehyde, permeabilized with Triton X-100 1% and blocked with 2% serum for 1 hour at 25°C. Samples were incubated with primary antibody (1 µg/ml in PBS/2% FBS) for 24 hour at 4°C. A DyLight® 650-conjugated donkey anti-sheep IgG H&L (ab96942) (1/1000) was used as the secondary antibody.



Donkey Anti-Sheep IgG H&L (DyLight® 650)  
(ab96942)

Emission spectra of DyLight® fluorochromes available in our catalog.

Line colors represent the approximate visible colors of the wavelength maxima.

### **Our Abpromise to you: Quality guaranteed and expert technical support**

---

- Replacement or refund for products not performing as stated on the datasheet
- Valid for 12 months from date of delivery
- Response to your inquiry within 24 hours
- We provide support in Chinese, English, French, German, Japanese and Spanish
- Extensive multi-media technical resources to help you
- We investigate all quality concerns to ensure our products perform to the highest standards

If the product does not perform as described on this datasheet, we will offer a refund or replacement. For full details of the Abpromise, please visit <https://www.abcam.com/abpromise> or contact our technical team.

### **Terms and conditions**

---

- Guarantee only valid for products bought direct from Abcam or one of our authorized distributors