

Goat Anti-Chicken IgY H&L (HRP) ab6877

★★★★★ [1 Abreviews](#) [48 References](#) [4 Images](#)

Overview

Product name	Goat Anti-Chicken IgY H&L (HRP)
Host species	Goat
Target species	Chicken
Tested applications	Suitable for: ICC/IF, Dot blot, ELISA, IHC-P, IHC-Fr, Immunomicroscopy, WB
Immunogen	chicken IgY whole molecule
Conjugation	HRP

Properties

Form	Liquid
Storage instructions	Shipped at 4°C. Store at +4°C.
Storage buffer	Preservative: 0.01% Gentamicin sulphate Constituents: 0.878% Sodium chloride, 0.424% Potassium phosphate, 1% BSA
Purity	Affinity purified
Purification notes	This product was prepared from monospecific antiserum by immunoaffinity chromatography using chicken IgG coupled to agarose beads followed by solid phase adsorption(s) to remove any unwanted reactivities.
Conjugation notes	Horseradish Peroxidase (HRP)
Clonality	Polyclonal
Isotype	IgG

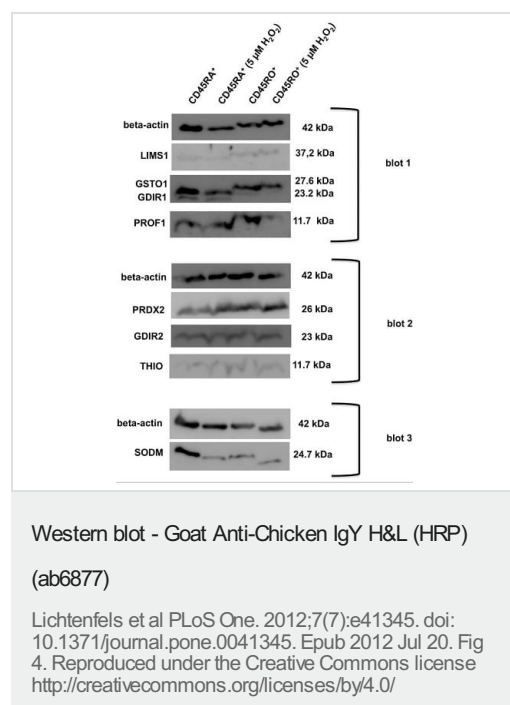
Applications

The Abpromise guarantee Our **Abpromise guarantee** covers the use of ab6877 in the following tested applications. The application notes include recommended starting dilutions; optimal dilutions/concentrations should be determined by the end user.

Application	Abreviews	Notes
ICC/IF		1/1000 - 1/10000.

Application	Abreviews	Notes
Dot blot		Use at an assay dependent dilution.
ELISA		1/50000.
IHC-P		Use at an assay dependent dilution.
IHC-Fr		Use at an assay dependent dilution.
Immunomicroscopy		Use at an assay dependent dilution.
WB	★★★★★ (1)	1/2000 - 1/20000. PubMed: 16543490

Images



Representative Western blot analysis for the selected panel of differentially expressed targets in the various T cell subsets.

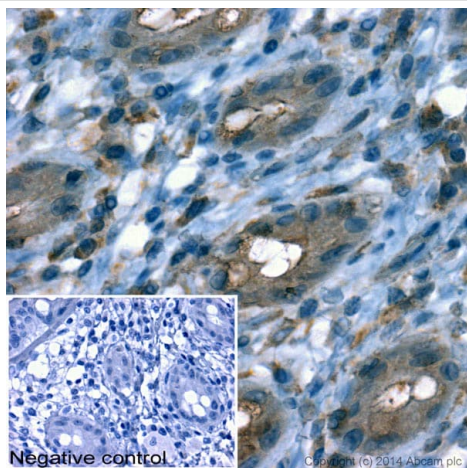
Western blot analyses were performed by serially probing sets of 3 membranes per donor. The expression levels of GDIR1, GSTO1, LIMS1 and PROF1 were analyzed blot 1 (upper panel), GDIR2, PRDX2 and THIO on blot 2 (middle panel) and SODM on blot 3 (lower level) of the respective membrane set.

The relative expression levels were defined by densitometric quantification normalized to the corresponding beta-actin signals, co-detected on each membrane.

Aliquots of 15 µg total lysate per sample/lane were loaded onto Tris-Tricine gels (16%T/2.5%C) and subsequently separated.

Lysates generated from untreated CD45RA⁺ and CD45RO⁺ T cells were throughout the set of membranes loaded onto the lanes 1 and 3 respectively, whereas lysates generated from the corresponding T cell subsets exposure for 3 h to 5 µM H₂O₂ were loaded onto the lanes 2 and 4 as indicated.

The protein entry names of the targets (left) and their corresponding molecular weight (right) are listed.



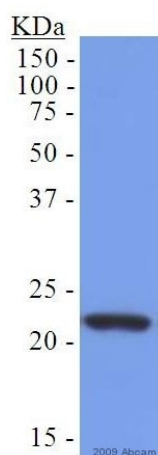
Immunohistochemistry (Formalin/PFA-fixed paraffin-embedded sections) - Goat Anti-Chicken IgY H&L (HRP) (ab6877)

IHC image of beta Actin staining in human normal colon formalin fixed paraffin embedded tissue section*.

The section was pre-treated using pressure cooker heat mediated antigen retrieval with sodium citrate buffer (pH 6) for 30 mins. The section was incubated with [ab13822](#), 10 µg/ml overnight at +4°C. An HRP-conjugated secondary (ab6877, 1/500 dilution) was used for 1 hr at room temperature. The section was counterstained with hematoxylin and mounted with DPX.

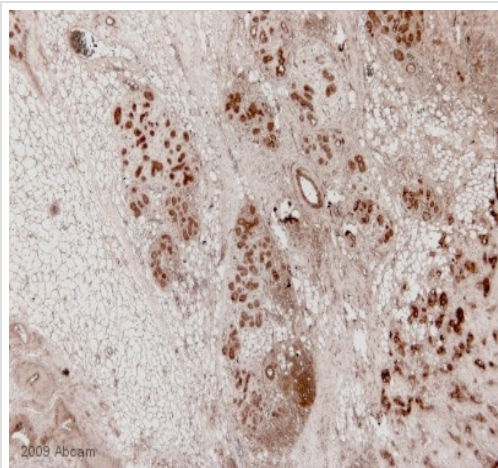
The inset **negative control** image is taken from an identical assay without primary antibody.

*Tissue obtained from the Human Research Tissue Bank, supported by the NIHR Cambridge Biomedical Research Centre



Western blot - Goat Anti-Chicken IgY H&L (HRP) (ab6877)

ab6877 was used at dilution 1/1000 with the primary antibody [ab25912](#) in WB. See the review on [ab25912](#).



ab6877 was used at dilution 1/200 with the primary antibody **ab17517** in IHC-P. See the review on **ab17517**.

Immunohistochemistry (Formalin/PFA-fixed paraffin-embedded sections) - Goat Anti-Chicken IgY H&L (HRP) (ab6877)

Please note: All products are "FOR RESEARCH USE ONLY. NOT FOR USE IN DIAGNOSTIC PROCEDURES"

Our Abpromise to you: Quality guaranteed and expert technical support

- Replacement or refund for products not performing as stated on the datasheet
- Valid for 12 months from date of delivery
- Response to your inquiry within 24 hours
- We provide support in Chinese, English, French, German, Japanese and Spanish
- Extensive multi-media technical resources to help you
- We investigate all quality concerns to ensure our products perform to the highest standards

If the product does not perform as described on this datasheet, we will offer a refund or replacement. For full details of the Abpromise, please visit <https://www.abcam.com/abpromise> or contact our technical team.

Terms and conditions

- Guarantee only valid for products bought direct from Abcam or one of our authorized distributors