

## Product datasheet

# Goat F(ab) Anti-Mouse IgG H&L ab6668

[36 References](#) [2 Images](#)

### Overview

<b>Product name</b>	Goat F(ab) Anti-Mouse IgG H&L
<b>Host species</b>	Goat
<b>Target species</b>	Mouse
<b>Tested applications</b>	<b>Suitable for:</b> WB, ICC/IF, IHC, ELISA
<b>Immunogen</b>	Mouse IgG whole molecule

### Properties

<b>Form</b>	Liquid
<b>Storage instructions</b>	Shipped at 4°C. Store at +4°C short term (1-2 weeks). Upon delivery aliquot. Store at -20°C or -80°C. Avoid freeze / thaw cycle.
<b>Storage buffer</b>	Preservative: 0.01% Sodium azide Constituents: 0.42% Potassium phosphate, 0.87% Sodium chloride
<b>Purification notes</b>	This product was prepared from monospecific antiserum by immunoaffinity chromatography using Mouse IgG coupled to agarose beads followed by solid phase adsorption(s) to remove any unwanted reactivities, papain digestion and chromatographic separation. Assay by immunoelectrophoresis resulted in a single precipitin arc against anti-Goat Serum. No reaction was observed against anti-Papain or anti-Goat IgG F(c)."
<b>Clonality</b>	Polyclonal
<b>Isotype</b>	IgG

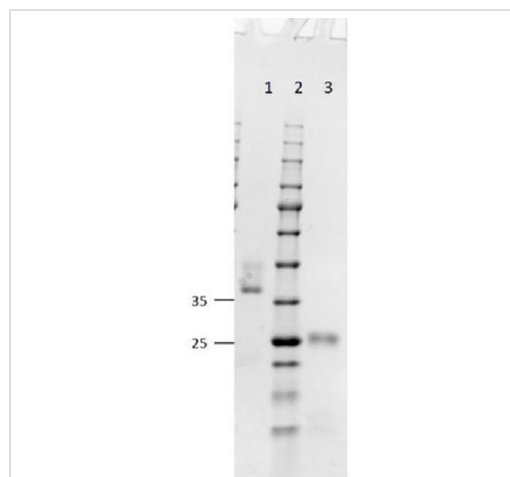
### Applications

**The Abpromise guarantee** Our **Abpromise guarantee** covers the use of ab6668 in the following tested applications. The application notes include recommended starting dilutions; optimal dilutions/concentrations should be determined by the end user.

Application	Abreviews	Notes
WB		1/2000 - 1/10000.
ICC/IF		1/1000 - 1/5000.

Application	Abreviews	Notes
IHC		1/1000 - 1/5000.
ELISA		1/50000.

## Images



SDS-PAGE - Goat F(ab) Anti-Mouse IgG H&L  
(ab6668)

### SDS-PAGE results of Goat Fab Anti-Mouse IgG (H&L) ab6668.

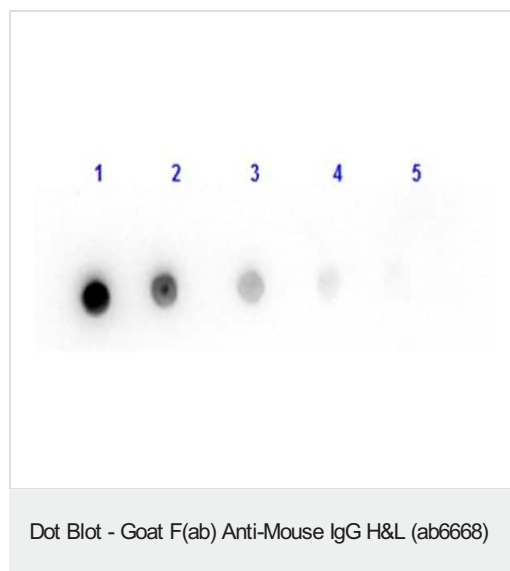
**Lane 1:** Non-reduced Goat Fab Anti-Mouse.

**Lane 2:** Opal Prestained Ladder.

**Lane 3:** Reduced Goat Fab Anti-Mouse.

Load: 1.0 µg.

Coomassie stained and imaged.



Dot Blot - Goat F(ab) Anti-Mouse IgG H&L (ab6668)

### Dot Blot results of Goat Fab Anti-Mouse IgG Antibody ab6668.

Dots are Mouse IgG at (1) 100ng, (2) 33.3ng, (3) 11.1ng, (4) 3.70ng, (5) 1.23ng.

Blocked for 30 min at RT.

**Primary Antibody:** Goat Fab Anti-Mouse IgG at 1 µg/mL for 1 hr at RT.

**Secondary Antibody:** Donkey Anti-Goat IgG HRP at 1:40,000 for 30 min at RT.

Imaged with BioRad ChemiDoc, Chemi filter.

**Please note:** All products are "FOR RESEARCH USE ONLY. NOT FOR USE IN DIAGNOSTIC PROCEDURES"

## Our Abpromise to you: Quality guaranteed and expert technical support

- Replacement or refund for products not performing as stated on the datasheet
- Valid for 12 months from date of delivery

- Response to your inquiry within 24 hours
- We provide support in Chinese, English, French, German, Japanese and Spanish
- Extensive multi-media technical resources to help you
- We investigate all quality concerns to ensure our products perform to the highest standards

If the product does not perform as described on this datasheet, we will offer a refund or replacement. For full details of the Abpromise, please visit <https://www.abcam.com/abpromise> or contact our technical team.

### **Terms and conditions**

---

- Guarantee only valid for products bought direct from Abcam or one of our authorized distributors