

Product datasheet

Goat F(ab')₂ Anti-Rabbit IgG - H&L (FITC), pre-adsorbed ab6009

[7 References](#) [1 Image](#)

Overview

Product name	Goat F(ab') ₂ Anti-Rabbit IgG - H&L (FITC), pre-adsorbed
Host species	Goat
Target species	Rabbit
Specificity	Assay by immunoelectrophoresis resulted in a single precipitin arc against anti-Fluorescein, anti-Goat Serum, Rabbit IgG and Rabbit Serum. No reaction was observed against anti-Pepsin, anti-Goat IgG F(c) or Bovine, Horse, Human, Mouse, Rat and Sheep Serum Proteins.
Tested applications	Suitable for: ICC/IF, Immunomicroscopy, Flow Cyt, ELISA
Minimal cross-reactivity	Chicken, Cow, Goat, Guinea pig, Hamster, Horse, Human, Mouse, Rat, Sheep more details
Immunogen	Rabbit IgG whole molecule
Conjugation	FITC. Ex: 493nm, Em: 528nm

Properties

Form	Liquid
Storage instructions	Shipped at 4°C. Store at +4°C.
Storage buffer	pH: 6.50 Preservative: 0.01% Sodium azide Constituents: 0.42% Tripotassium orthophosphate, 0.87% Sodium chloride, 1% BSA BSA is IgG and protease free
Purification notes	This product was prepared from monospecific antiserum by immunoaffinity chromatography using Rabbit IgG coupled to agarose beads followed by solid phase adsorption(s) to remove any unwanted reactivities, pepsin digestion and chromatographic separation.
Conjugation notes	Fluorescein isothiocyanate (FITC) (Molecular Weight 390 daltons) Absorption Wavelength: 495 nm Emission Wavelength: 528 nm Fluorochrome/Protein Ratio: 3.6 moles FITC per mole of Goat IgG F(ab') ₂
Clonality	Polyclonal
Isotype	IgG

Applications

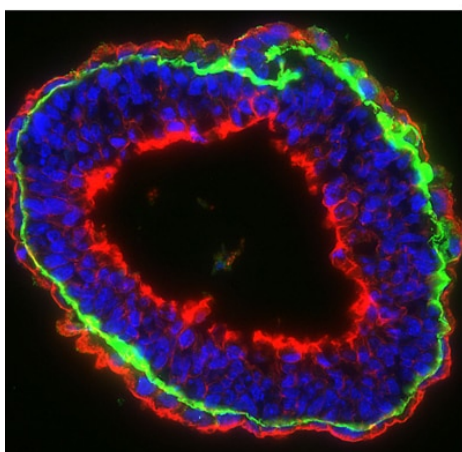
The Abpromise guarantee

Our **Abpromise guarantee** covers the use of ab6009 in the following tested applications.

The application notes include recommended starting dilutions; optimal dilutions/concentrations should be determined by the end user.

Application	Abreviews	Notes
ICC/IF		1/1000 - 1/5000.
Immunomicroscopy		Use at an assay dependent dilution.
Flow Cyt		1/500 - 1/2500.
ELISA		1/10000 - 1/50000.

Images



Immunohistochemistry (Frozen sections) - Goat F(ab')₂ Anti-Rabbit IgG - H&L (FITC), pre-adsorbed (ab6009)

Courtesy of Dr. Shaohua Li, UMDNJ-Robert Wood Johnson Medical School

Sample: mouse embryonic stem cell-differentiated embryoid bodies (EBs)

Preparation:

Fix in 3%PFA in PBS for 30 min at RT

Incubate in 7.5% sucrose-PBS for 3h at RT

Incubate in 15% sucrose-PBS at 4 degree Celsius overnight

Embed the EBs in tissue-Tek OCT compound

Cut frozen sections to 4-20 μ m thickness

Primary antibody: Rabbit anti-laminin alpha 1 (basement membrane marker), 1:400

Secondary antibody: Goat F(ab')₂ polyclonal Secondary Antibody to Rabbit IgG - H&L (FITC), pre-adsorbed (ab6009), 1:100

Nuclei were counterstained with DAPI

F-actin was stained with rhodamine-phalloidin, 1:100

Please note: All products are "FOR RESEARCH USE ONLY. NOT FOR USE IN DIAGNOSTIC PROCEDURES"

Our Abpromise to you: Quality guaranteed and expert technical support

- Replacement or refund for products not performing as stated on the datasheet
- Valid for 12 months from date of delivery
- Response to your inquiry within 24 hours

- We provide support in Chinese, English, French, German, Japanese and Spanish
- Extensive multi-media technical resources to help you
- We investigate all quality concerns to ensure our products perform to the highest standards

If the product does not perform as described on this datasheet, we will offer a refund or replacement. For full details of the Abpromise, please visit <https://www.abcam.com/abpromise> or contact our technical team.

Terms and conditions

- Guarantee only valid for products bought direct from Abcam or one of our authorized distributors