

## Product datasheet

### Goat Anti-Mouse IgG1 (HRP) preadsorbed ab98693

★★★★★ [1 Abreviews](#) [18 References](#) [1 Image](#)

#### Overview

<b>Product name</b>	Goat Anti-Mouse IgG1 (HRP) preadsorbed
<b>Host species</b>	Goat
<b>Target species</b>	Mouse
<b>Specificity</b>	<p>By immunoelectrophoresis and ELISA this antibody reacts specifically with mouse IgG1.</p> <p>Cross reactivity with immunoglobulins is less than 2%. No antibody was detected against non-immunoglobulin serum proteins.</p> <p>Less than 1% cross reactivity to human and rat IgG1 was detected. This antibody may cross react with IgG1 from other species.</p>
<b>Tested applications</b>	<b>Suitable for:</b> ICC, IHC-P, ELISA, WB
<b>Minimal cross-reactivity</b>	Human, Rat <a href="#">more details</a>
<b>Conjugation</b>	HRP

#### Properties

<b>Form</b>	Liquid
<b>Storage instructions</b>	Shipped at 4°C. Store at +4°C.
<b>Storage buffer</b>	<p>pH: 6.8</p> <p>Constituents: 0.2% BSA, 0.05% CMIT/MIT based preservative</p>
<b>Purity</b>	Immunogen affinity purified
<b>Purification notes</b>	Antiserum was solid phase adsorbed to ensure subclass specificity. Antiserum was cross adsorbed using human and rat immunosorbents to remove cross reactive antibodies. The antibody to mouse IgG1 was isolated by affinity chromatography using antigen coupled to agarose beads and conjugated to horseradish peroxidase (HRP).
<b>Clonality</b>	Polyclonal
<b>Isotype</b>	IgG

#### Applications

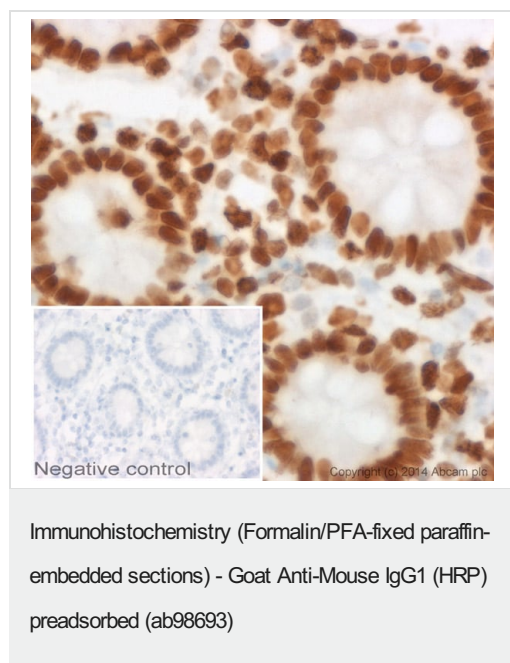
Our [Abpromise guarantee](#) covers the use of ab98693 in the following tested applications.

## The Abpromise guarantee

The application notes include recommended starting dilutions; optimal dilutions/concentrations should be determined by the end user.

Application	Abreviews	Notes
ICC		Use at an assay dependent dilution.
IHC-P		1/200 - 1/2000.
ELISA		1/10000 - 1/100000. Similar dilution to primary antibody.
WB	★★★★★ (1)	1/2000 - 1/20000. Colorimetric 1/5000 - 1/25000 Chemiluminescent

## Images



IHC image of Histone H1.0 staining in human colon formalin fixed paraffin embedded tissue section\*. The section was pre-treated using pressure cooker heat mediated antigen retrieval with sodium citrate buffer (pH6) for 30mins. The section was incubated with **ab11080**, 7.5µg/ml overnight at +4°C. An HRP-conjugated secondary (ab98693, 1/2000 dilution) was used for 1hr at room temperature. The section was counterstained with haematoxylin and mounted with DPX.

The inset negative control image is secondary-only at 1/500 dilution.

\*Tissue obtained from the Human Research Tissue Bank, supported by the NIHR Cambridge Biomedical Research Centre

**Please note:** All products are "FOR RESEARCH USE ONLY. NOT FOR USE IN DIAGNOSTIC PROCEDURES"

## Our Abpromise to you: Quality guaranteed and expert technical support

- Replacement or refund for products not performing as stated on the datasheet
- Valid for 12 months from date of delivery
- Response to your inquiry within 24 hours
- We provide support in Chinese, English, French, German, Japanese and Spanish
- Extensive multi-media technical resources to help you
- We investigate all quality concerns to ensure our products perform to the highest standards

If the product does not perform as described on this datasheet, we will offer a refund or replacement. For full details of the Abpromise, please visit <https://www.abcam.com/abpromise> or contact our technical team.

## Terms and conditions

---

- Guarantee only valid for products bought direct from Abcam or one of our authorized distributors