

Product datasheet

Goat Anti-Mouse IgG2α heavy chain (HRP) ab97245

★★★★★ [1 Abreviews](#) [73 References](#) [1 Image](#)

Overview

| | |
|----------------------------|---|
| Product name | Goat Anti-Mouse IgG2a heavy chain (HRP) |
| Host species | Goat |
| Target species | Mouse |
| Specificity | By immunoelectrophoresis and ELISA this antibody reacts specifically with mouse IgG2a. Cross reactivity with other immunoglobulins is less than 2%. |
| Tested applications | Suitable for: IHC-P, ELISA, WB, ICC |
| Conjugation | HRP |

Properties

| | |
|-----------------------------|--|
| Form | Liquid |
| Storage instructions | Shipped at 4°C. Store at +4°C. |
| Storage buffer | pH: 6.8 Constituents: 0.2% BSA, 0.05% CMIT/MIT based preservative |
| Purity | Immunogen affinity purified |
| Purification notes | Antiserum was solid phase adsorbed to ensure subclass specificity. This antibody was isolated by affinity chromatography using antigen coupled to agarose beads and conjugated to Horse Radish Peroxidase (HRP). |
| Conjugation notes | Molar enzyme/ antibody protein ratio is 4:1 |
| Clonality | Polyclonal |
| Isotype | IgG |

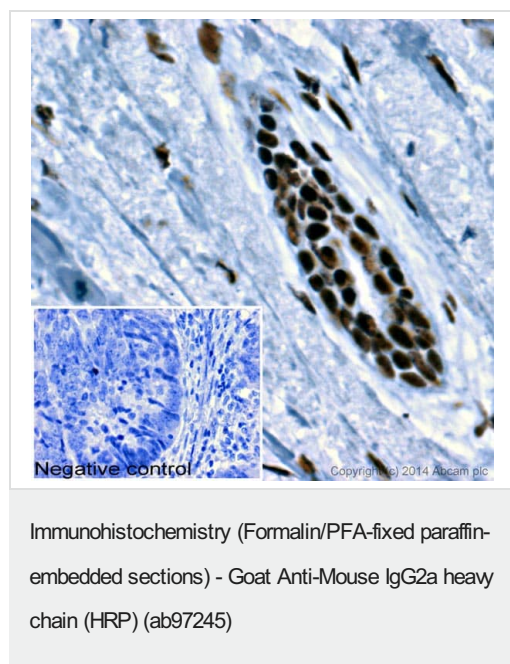
Applications

The Abpromise guarantee Our **Abpromise guarantee** covers the use of ab97245 in the following tested applications. The application notes include recommended starting dilutions; optimal dilutions/concentrations should be determined by the end user.

| Application | Abreviews | Notes |
|-------------|-----------|-----------------|
| IHC-P | | 1/200 - 1/2000. |

| Application | Abreviews | Notes |
|-------------|-----------|---|
| ELISA | | 1/10000 - 1/100000. Similar dilution to primary antibody. |
| WB | ★★★★★ (1) | 1/2000 - 1/25000. Colorimetric 1/2000 - 1/20000; Chemiluminescent 1/5000 - 1/25000 |
| ICC | | Use at an assay dependent dilution. |

Images



IHC image of SSB staining in Human breast adenocarcinoma formalin fixed paraffin embedded tissue section*. The section was pre-treated using pressure cooker heat mediated antigen retrieval with sodium citrate buffer (pH6) for 30mins. The section was incubated with **ab75927**, 0.5µg/ml overnight at +4°C. An HRP-conjugated secondary (Ab97245, 1/200 dilution) was used for 1hr at room temperature. The section was counterstained with haematoxylin and mounted with DPX.

The inset negative control image is taken from an identical assay without primary antibody.

*Tissue obtained from the Human Research Tissue Bank, supported by the NIHR Cambridge Biomedical Research Centre

Please note: All products are "FOR RESEARCH USE ONLY. NOT FOR USE IN DIAGNOSTIC PROCEDURES"

Our Abpromise to you: Quality guaranteed and expert technical support

- Replacement or refund for products not performing as stated on the datasheet
- Valid for 12 months from date of delivery
- Response to your inquiry within 24 hours
- We provide support in Chinese, English, French, German, Japanese and Spanish
- Extensive multi-media technical resources to help you
- We investigate all quality concerns to ensure our products perform to the highest standards

If the product does not perform as described on this datasheet, we will offer a refund or replacement. For full details of the Abpromise, please visit <https://www.abcam.com/abpromise> or contact our technical team.

Terms and conditions

- Guarantee only valid for products bought direct from Abcam or one of our authorized distributors