

Product datasheet

Goat Anti-Mouse IgG2b heavy chain (HRP) ab97250

34 References 1 Image

Overview

Product name	Goat Anti-Mouse IgG2b heavy chain (HRP)
Host species	Goat
Target species	Mouse
Specificity	By immunoelectrophoresis and ELISA this antibody reacts specifically with mouse IgG2b. Cross reactivity with other immunoglobulins is less than 2%.
Tested applications	Suitable for: ICC, IHC-P, ELISA, WB
Conjugation	HRP

Properties

Form	Liquid
Storage instructions	Shipped at 4°C. Store at +4°C.
Storage buffer	pH: 6.8 Constituents: 0.2% BSA, 0.05% CMIT/MIT based preservative
Purity	Immunogen affinity purified
Purification notes	Antiserum was solid phase adsorbed to ensure subclass specificity. This antibody was isolated by affinity chromatography using antigen coupled to agarose beads and conjugated to Horse Radish Peroxidase (HRP).
Conjugation notes	Molar enzyme/ antibody protein ratio is 4:1
Clonality	Polyclonal
Isotype	IgG

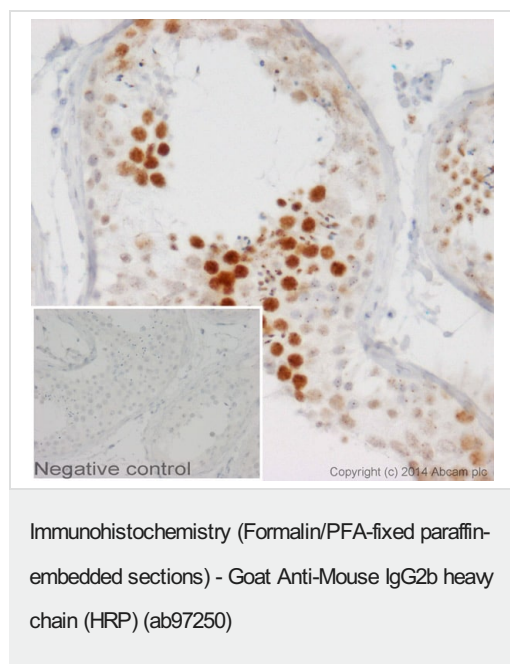
Applications

The **Abpromise guarantee** Our **Abpromise guarantee** covers the use of ab97250 in the following tested applications. The application notes include recommended starting dilutions; optimal dilutions/concentrations should be determined by the end user.

Application	Abreviews	Notes
ICC		Use at an assay dependent dilution.

Application	Abreviews	Notes
IHC-P		1/200 - 1/2000.
ELISA		1/10000 - 1/100000. Similar dilution to primary antibody.
WB		1/2000 - 1/25000. WB-Colorimetric 1/2000 - 1/20000; WB-Chemiluminescent 1/5000 - 1/25000

Images



IHC image of Coilin staining in human testis formalin fixed paraffin embedded tissue section*. The section was pre-treated using pressure cooker heat mediated antigen retrieval with sodium citrate buffer (pH6) for 30mins. The section was incubated with **ab87913**, 3µg/ml overnight at +4°C. An HRP-conjugated secondary (ab97250, 1/500 dilution) was used for 1hr at room temperature. The section was counterstained with haematoxylin and mounted with DPX.

The inset negative control image is taken from an identical assay without primary antibody.

*Tissue obtained from the Human Research Tissue Bank, supported by the NIHR Cambridge Biomedical Research Centre

Please note: All products are "FOR RESEARCH USE ONLY. NOT FOR USE IN DIAGNOSTIC PROCEDURES"

Our Abpromise to you: Quality guaranteed and expert technical support

- Replacement or refund for products not performing as stated on the datasheet
- Valid for 12 months from date of delivery
- Response to your inquiry within 24 hours
- We provide support in Chinese, English, French, German, Japanese and Spanish
- Extensive multi-media technical resources to help you
- We investigate all quality concerns to ensure our products perform to the highest standards

If the product does not perform as described on this datasheet, we will offer a refund or replacement. For full details of the Abpromise, please visit <https://www.abcam.com/abpromise> or contact our technical team.

Terms and conditions

- Guarantee only valid for products bought direct from Abcam or one of our authorized distributors