

## Product datasheet

# Goat Anti-Rabbit IgG H&L (Alexa Fluor® 405) preadsorbed ab175654

[8 References](#) [2 Images](#)

### Overview

<b>Product name</b>	Goat Anti-Rabbit IgG H&L (Alexa Fluor® 405) preadsorbed
<b>Host species</b>	Goat
<b>Target species</b>	Rabbit
<b>Specificity</b>	By immunoelectrophoresis and ELISA this antibody reacts specifically with rabbit IgG and with light chains common to other rabbit immunoglobulins. No antibody was detected against non-immunoglobulin serum proteins. Reduced cross-reactivity to bovine, chicken, horse, human, mouse, pig, and rat IgG was detected. This antibody may cross react with IgG from other species.
<b>Tested applications</b>	<b>Suitable for:</b> ICC/IF, ELISA, IHC-P, Flow Cyt
<b>Minimal cross-reactivity</b>	Chicken, Cow, Horse, Human, Mouse, Pig, Rat <a href="#">more details</a>
<b>Immunogen</b>	The details of the immunogen for this antibody are not available.
<b>Conjugation</b>	Alexa Fluor® 405. Ex: 402nm, Em: 421nm

### Properties

<b>Form</b>	Liquid
<b>Storage instructions</b>	Shipped at 4°C. Store at +4°C short term (1-2 weeks). Upon delivery aliquot. Store at -20°C. Avoid freeze / thaw cycle. Stable for 12 months at -20°C. Store In the Dark.
<b>Storage buffer</b>	Preservative: 0.02% Sodium azide Constituents: 23% Glycerol (glycerin, glycerine), PBS, 1% BSA
<b>Purity</b>	Immunogen affinity purified
<b>Purification notes</b>	Antiserum was cross adsorbed using bovine, chicken, horse, human, mouse, pig and rat immunosorbents to remove cross reactive antibodies. The antibody to rabbit IgG was isolated by affinity chromatography using antigen coupled to agarose beads.
<b>Clonality</b>	Polyclonal
<b>General notes</b>	We recommend storage time at 4°C should be minimal, since this may affect the signal strength.  Alexa Fluor® is a registered trademark of Molecular Probes, Inc, a Thermo Fisher Scientific

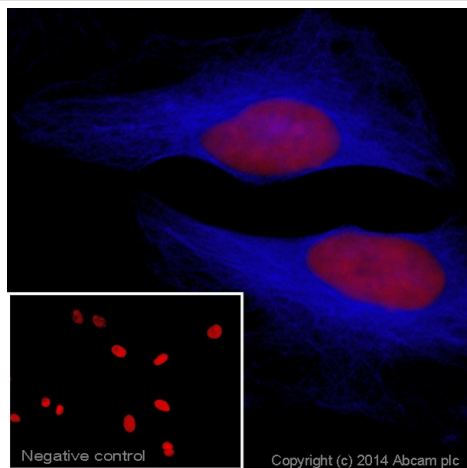
Company. The Alexa Fluor<sup>®</sup> dye included in this product is provided under an intellectual property license from Life Technologies Corporation. As this product contains the Alexa Fluor<sup>®</sup> dye, the purchase of this product conveys to the buyer the non-transferable right to use the purchased product and components of the product only in research conducted by the buyer (whether the buyer is an academic or for-profit entity). As this product contains the Alexa Fluor<sup>®</sup> dye the sale of this product is expressly conditioned on the buyer not using the product or its components, or any materials made using the product or its components, in any activity to generate revenue, which may include, but is not limited to use of the product or its components: (i) in manufacturing; (ii) to provide a service, information, or data in return for payment (iii) for therapeutic, diagnostic or prophylactic purposes; or (iv) for resale, regardless of whether they are sold for use in research. For information on purchasing a license to this product for purposes other than research, contact Life Technologies Corporation, 5781 Van Allen Way, Carlsbad, CA 92008 USA or [outlicensing@thermofisher.com](mailto:outlicensing@thermofisher.com).

## Applications

**The Abpromise guarantee** Our **Abpromise guarantee** covers the use of ab175654 in the following tested applications. The application notes include recommended starting dilutions; optimal dilutions/concentrations should be determined by the end user.

Application	Abreviews	Notes
ICC/IF		1/200 - 1/1000. We recommend the use of a dedicated 405 filter for optimal results not the DAPI filter. The DAPI filter may not excite until the maximum emission peaks of Alexa Fluor <sup>®</sup> 405 dye (see difference below) Ex max: Alexa Fluor <sup>®</sup> 405 = 402nm / DAPI = 359nm Em max: Alexa Fluor <sup>®</sup> 405 = 421nm / DAPI = 461nm
ELISA		Use at an assay dependent concentration.
IHC-P		Use at an assay dependent concentration.
Flow Cyt		1/2000.

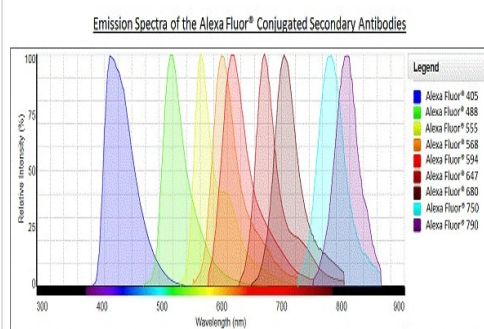
## Images



Immunocytochemistry/ Immunofluorescence - Goat Anti-Rabbit IgG H&L (Alexa Fluor® 405) preadsorbed (ab175654)

ICC/IF image of **ab6046** stained HeLa cells. The cells were 100% methanol fixed (5 min) and then incubated in 1%BSA / 10% normal goat serum / 0.3M glycine in 0.1% PBS-Tween for 1h to permeabilise the cells and block non-specific protein-protein interactions. The cells were then incubated with the antibody (**ab6046**, 1µg/ml) overnight at +4°C. The secondary antibody (blue) was ab175654 Alexa Fluor® 405 Goat polyclonal Secondary Antibody to Rabbit IgG - H&L, pre-adsorbed, used at 1µg/ml for 1h. DRAQ5™ (**ab108410**) was used to stain the cell nuclei (red) at a concentration of 1.25µM.

The negative control (inset) is a secondary-only assay to demonstrate low non-specific binding of the secondary antibody.



Alexa Fluor® - Goat Anti-Rabbit IgG H&L (Alexa Fluor® 405) preadsorbed (ab175654)

**Please note:** All products are "FOR RESEARCH USE ONLY. NOT FOR USE IN DIAGNOSTIC PROCEDURES"

### Our Abpromise to you: Quality guaranteed and expert technical support

- Replacement or refund for products not performing as stated on the datasheet
- Valid for 12 months from date of delivery
- Response to your inquiry within 24 hours
- We provide support in Chinese, English, French, German, Japanese and Spanish
- Extensive multi-media technical resources to help you
- We investigate all quality concerns to ensure our products perform to the highest standards

If the product does not perform as described on this datasheet, we will offer a refund or replacement. For full details of the Abpromise, please visit <https://www.abcam.com/abpromise> or contact our technical team.

## Terms and conditions

---

- Guarantee only valid for products bought direct from Abcam or one of our authorized distributors