

Product datasheet

Goat Anti-Rabbit IgG H&L (Alexa Fluor® 680) preadsorbed ab186696

[5 References](#) [1 Image](#)

Overview

| | |
|---------------------------------|--|
| Product name | Goat Anti-Rabbit IgG H&L (Alexa Fluor® 680) preadsorbed |
| Host species | Goat |
| Target species | Rabbit |
| Specificity | By immunoelectrophoresis and ELISA this antibody reacts specifically with rabbit IgG and with light chains common to other rabbit immunoglobulins. No antibody was detected against non-immunoglobulin serum proteins. Reduced cross-reactivity to bovine, chicken, horse, human, mouse, pig, and rat IgG was detected. This antibody may cross react with IgG from other species. |
| Tested applications | Suitable for: WB |
| Minimal cross-reactivity | Chicken, Cow, Horse, Human, Mouse, Pig, Rat more details |
| Immunogen | The details of the immunogen for this antibody are not available. |
| Conjugation | Alexa Fluor® 680. Ex: 679nm, Em: 702nm |

Properties

| | |
|-----------------------------|--|
| Form | Liquid |
| Storage instructions | Shipped at 4°C. Store at +4°C short term (1-2 weeks). Upon delivery aliquot. Store at -20°C. Avoid freeze / thaw cycle. Stable for 12 months at -20°C. Store In the Dark. |
| Storage buffer | Preservative: 0.02% Sodium azide Constituents: 23% Glycerol (glycerin, glycerine), PBS, 1% BSA |
| Purity | Immunogen affinity purified |
| Purification notes | Antiserum was cross adsorbed using bovine, chicken, horse, human, mouse, pig and rat immunosorbents to remove cross reactive Antibodies. The antibody to rabbit IgG was isolated by affinity chromatography using antigen coupled to agarose beads. |
| Clonality | Polyclonal |
| General notes | We batch test Goat Anti-Rabbit IgG H&L (Alexa Fluor® 680) preadsorbed, ab186696 in fluorescent WB. Although we don't batch test for ICC, ELISA, IHC-Fr or Flow cytometry customers have had success using Goat Anti-Rabbit IgG H&L (Alexa Fluor® 680) preadsorbed, ab186696 in |

these applications.

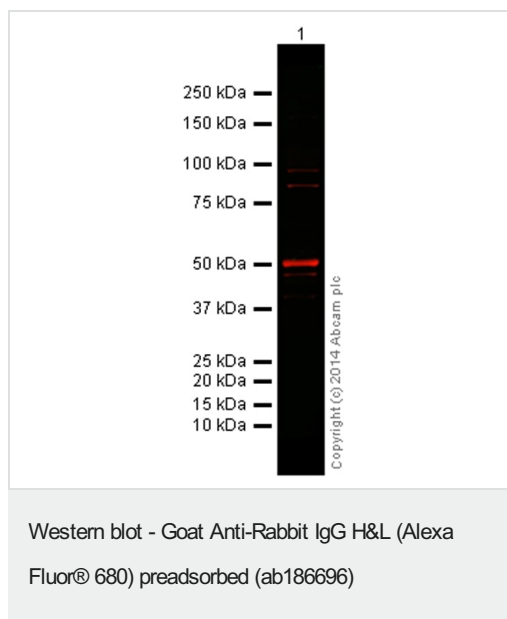
Alexa Fluor[®] is a registered trademark of Molecular Probes, Inc, a Thermo Fisher Scientific Company. The Alexa Fluor[®] dye included in this product is provided under an intellectual property license from Life Technologies Corporation. As this product contains the Alexa Fluor[®] dye, the purchase of this product conveys to the buyer the non-transferable right to use the purchased product and components of the product only in research conducted by the buyer (whether the buyer is an academic or for-profit entity). As this product contains the Alexa Fluor[®] dye the sale of this product is expressly conditioned on the buyer not using the product or its components, or any materials made using the product or its components, in any activity to generate revenue, which may include, but is not limited to use of the product or its components: (i) in manufacturing; (ii) to provide a service, information, or data in return for payment (iii) for therapeutic, diagnostic or prophylactic purposes; or (iv) for resale, regardless of whether they are sold for use in research. For information on purchasing a license to this product for purposes other than research, contact Life Technologies Corporation, 5781 Van Allen Way, Carlsbad, CA 92008 USA or outlicensing@thermofisher.com.

Applications

The Abpromise guarantee Our **Abpromise guarantee** covers the use of ab186696 in the following tested applications. The application notes include recommended starting dilutions; optimal dilutions/concentrations should be determined by the end user.

| Application | Abreviews | Notes |
|-------------|-----------|----------|
| WB | | 1/10000. |

Images



Anti-beta Tubulin antibody - Loading Control (**ab6046**) at 1 µg/ml + HeLa (Human epithelial carcinoma cell line) Whole Cell Lysate at 10 µg

Secondary

Goat Anti-Rabbit IgG H&L (Alexa Fluor[®] 680) preadsorbed (ab186696) at 1/10000 dilution

Observed band size: 50 kDa

This blot was produced using a 4-12% Bis-tris gel under the MOPS buffer system. The gel was run at 200V for 50 minutes before being transferred onto a Nitrocellulose membrane at 30V for 70 minutes. The membrane was then blocked for an hour using 5% Milk before being incubated with **ab6046** overnight at 4°C. Antibody binding was detected using ab186696 at a 1:10,000 dilution for 1hr at room

temperature and then imaged using the Licor Odyssey CLx.

Please note: All products are "FOR RESEARCH USE ONLY. NOT FOR USE IN DIAGNOSTIC PROCEDURES"

Our Abpromise to you: Quality guaranteed and expert technical support

- Replacement or refund for products not performing as stated on the datasheet
- Valid for 12 months from date of delivery
- Response to your inquiry within 24 hours

- We provide support in Chinese, English, French, German, Japanese and Spanish
- Extensive multi-media technical resources to help you
- We investigate all quality concerns to ensure our products perform to the highest standards

If the product does not perform as described on this datasheet, we will offer a refund or replacement. For full details of the Abpromise, please visit <https://www.abcam.com/abpromise> or contact our technical team.

Terms and conditions

- Guarantee only valid for products bought direct from Abcam or one of our authorized distributors