

Product datasheet

Goat Anti-Rabbit IgG H&L (Alkaline Phosphatase) ab97048

★★★★★ [1 Abreviews](#) [39 References](#) [2 Images](#)

Overview

Product name	Goat Anti-Rabbit IgG H&L (Alkaline Phosphatase)
Host species	Goat
Target species	Rabbit
Specificity	By immunoelectrophoresis and ELISA this antibody reacts specifically with rabbit IgG and with light chains common to other rabbit immunoglobulins. No antibody was detected against non-immunoglobulin serum proteins. This antibody may cross react with IgG from other species.
Tested applications	Suitable for: ICC, IHC-P, ELISA, WB
Conjugation	Alkaline Phosphatase

Properties

Form	Liquid
Storage instructions	Shipped at 4°C. Store at +4°C.
Storage buffer	pH: 6.8 Preservative: 0.09% Sodium azide Constituents: 1.19% HEPES, 0.2% BSA, 0.58% Sodium chloride, 0.0095% Magnesium chloride, 0.00136% Zinc chloride
Purity	Immunogen affinity purified
Purification notes	This antibody was isolated by affinity chromatography using antigen coupled to agarose beads and conjugated to Alkaline Phosphatase (AP).
Conjugation notes	Molar enzyme: antibody protein ratio is 1:1
Clonality	Polyclonal
Isotype	IgG
General notes	Part of the AbExcel range.

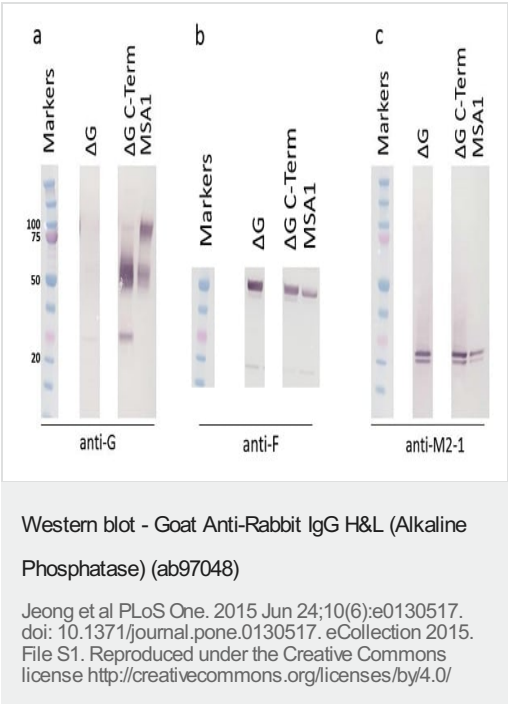
Applications

The **Abpromise guarantee** Our **Abpromise guarantee** covers the use of ab97048 in the following tested applications.

The application notes include recommended starting dilutions; optimal dilutions/concentrations should be determined by the end user.

Application	Abreviews	Notes
ICC		Use at an assay dependent dilution.
IHC-P		1/100 - 1/1000.
ELISA		1/5000 - 1/50000. Primary
WB	★★★★★ (1)	1/5000 - 1/50000. Chemiluminescent detection

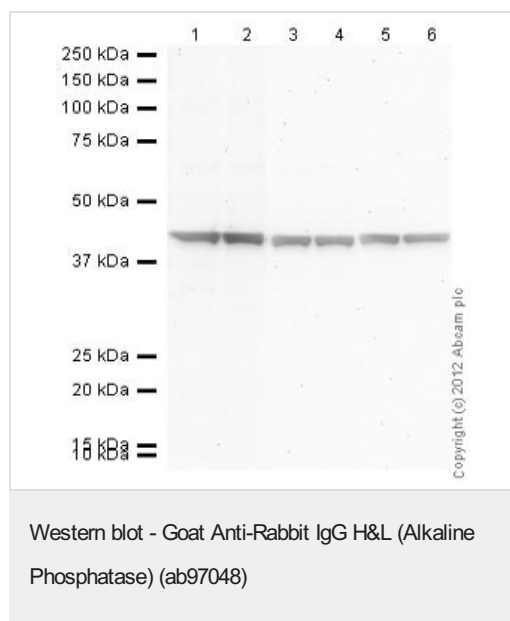
Images



RSV mutants show expected patterns of G, F, and M2-1 expression.

Western blotting of Vero cell lysates infected with RSV ΔG, ΔG C-term, and wild type (MSA1). (**Figure A**) Detection of G using anti-G polyclonal antibody. (**Figure B**) Detection of F using anti-F antibody. (**Figure C**) Detection of M2-1 using anti-M2-1 antibody. Each Figure shows samples that were run on the same gel and irrelevant lanes are covered with white rectangles. Molecular weights in kD are shown in Figure A.

Cell lysates from virus cultures grown for 6 days on Vero cells were subjected to SDS-PAGE, transferred to membranes and probed with a proprietary anti-RSV F antibody or anti-M2-1 antibody (Abcam, [ab94805](#)), and incubated with a secondary goat anti-mouse alkaline phosphatase conjugate. Anti-G western blot was done with rabbit anti-RSV-G polyclonal and incubated with goat anti-rabbit secondary antibody (Abcam, ab97048). Bands were visualized using BCIP/NBT. The molecular weight marker used was Precision Plus Protein Dual Color Standards.



All lanes : Anti-beta Actin antibody - Loading Control (**ab8227**) at 1 µg/ml

Lanes 1-6 : HeLa (Human epithelial carcinoma cell line) whole cell lysate
Lysates/proteins at 10 µg per lane.

Secondary

Lanes 1 - 2 : Goat polyclonal Secondary Antibody to Rabbit IgG - H&L (AP) (ab97048) at 1/5000 dilution

Lanes 3 - 4 : Goat polyclonal Secondary Antibody to Rabbit IgG - H&L (AP) (ab97048) at 1/20000 dilution

Lanes 5 - 6 : Goat polyclonal Secondary Antibody to Rabbit IgG - H&L (AP) (ab97048) at 1/50000 dilution

Developed using the ECL technique

Performed under reducing conditions.

Exposure time : 4 minutes

Please note: All products are "FOR RESEARCH USE ONLY. NOT FOR USE IN DIAGNOSTIC PROCEDURES"

Our Abpromise to you: Quality guaranteed and expert technical support

- Replacement or refund for products not performing as stated on the datasheet
- Valid for 12 months from date of delivery
- Response to your inquiry within 24 hours
- We provide support in Chinese, English, French, German, Japanese and Spanish
- Extensive multi-media technical resources to help you
- We investigate all quality concerns to ensure our products perform to the highest standards

If the product does not perform as described on this datasheet, we will offer a refund or replacement. For full details of the Abpromise, please visit <https://www.abcam.com/abpromise> or contact our technical team.

Terms and conditions

- Guarantee only valid for products bought direct from Abcam or one of our authorized distributors