

## Product datasheet

### Goat Anti-Rabbit IgG H&L (Cy2 ®) preadsorbed ab6940

★★★★★ [1 Abreviews](#) [39 References](#) [3 Images](#)

#### Overview

<b>Product name</b>	Goat Anti-Rabbit IgG H&L (Cy2 ®) preadsorbed
<b>Host species</b>	Goat
<b>Target species</b>	Rabbit
<b>Tested applications</b>	<b>Suitable for:</b> WB, ICC/IF, IHC-P, IHC-Fr, ICC, Flow Cyt, ELISA
<b>Minimal cross-reactivity</b>	Chicken, Cow, Goat, Guinea pig, Hamster, Horse, Human, Mouse, Rat, Sheep <a href="#">more details</a>
<b>Immunogen</b>	Full length native Rabbit IgG (purified).
<b>Conjugation</b>	Cy2 ®. Ex: 489nm, Em: 505nm

#### Properties

<b>Form</b>	Liquid
<b>Storage instructions</b>	Shipped at 4°C. Store at +4°C.
<b>Storage buffer</b>	pH: 6.50 Preservative: 0.01% Sodium azide Constituents: 0.42% Tripotassium orthophosphate, 0.87% Sodium chloride, 1% BSA
<b>Purity</b>	Immunogen affinity purified
<b>Purification notes</b>	This product was prepared from monospecific antiserum by immunoaffinity chromatography using Rabbit IgG coupled to agarose beads followed by solid phase adsorption(s) to remove any unwanted reactivities and extensive dialysis against the buffer stated above. Assay by immunoelectrophoresis resulted in a single precipitin arc against anti-Goat Serum, Rabbit IgG and Rabbit Serum.
<b>Conjugation notes</b>	Cy2 (Cyanine 2-OSu) (Molecular Weight 897 daltons) Absorption Wavelength: 489 nm Emission Wavelength: 505 nm Fluorochrome/Protein Ratio: 2.0 moles Cy2 per mole of Goat IgG
<b>Clonality</b>	Polyclonal
<b>Isotype</b>	IgG
<b>General notes</b>	Cy™ and CyDye™ are registered trademarks of Cytiva.  This secondary antibody is specifically designed for the detection of multiple primary antibodies (polyclonal or monoclonal) of different host species in experiments where cells are simultaneously labeled without unwanted cross reaction.

## Applications

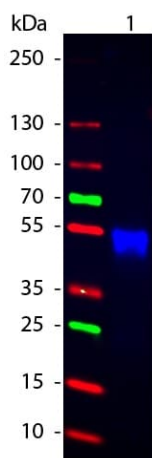
### The Abpromise guarantee

Our **Abpromise guarantee** covers the use of ab6940 in the following tested applications.

The application notes include recommended starting dilutions; optimal dilutions/concentrations should be determined by the end user.

Application	Abreviews	Notes
WB		Use at an assay dependent dilution.
ICC/IF		1/1000 - 1/5000.
IHC-P		Use at an assay dependent concentration.
IHC-Fr		Use at an assay dependent concentration.
ICC	★★★★★ (1)	Use at an assay dependent concentration.
Flow Cyt		Use at an assay dependent dilution.
ELISA		1/10000 - 1/50000.

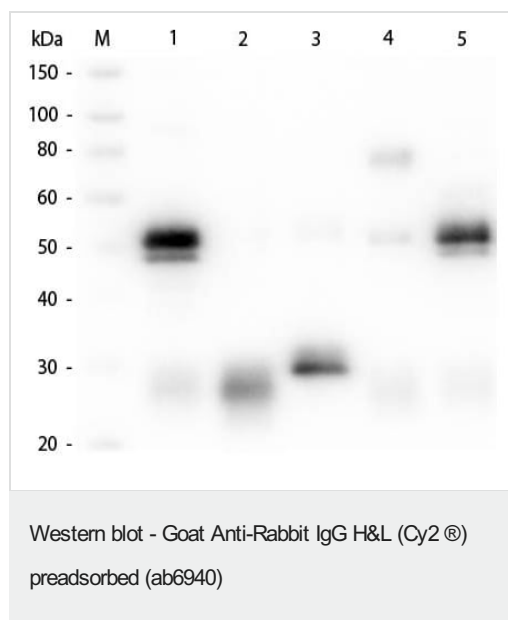
## Images



Western blot - Goat Anti-Rabbit IgG H&L (Cy2 ®)  
preadsorbed (ab6940)

Goat Anti-Rabbit IgG H&L (Cy2 ®) preadsorbed (ab6940) at  
1/1000 dilution + Rabbit IgG at 0.05 µg

Incubated with ab6940 for 1 hour at room temperature.



**All lanes** : Goat Anti-Rabbit IgG H&L (Cy2<sup>®</sup>) preadsorbed (ab6940) at 1/1000 dilution

**Lane 1** : Rabbit IgG whole molecule

**Lane 2** : Rabbit IgG F(ab) fragment

**Lane 3** : Rabbit IgG F(c) fragment

**Lane 4** : Rabbit IgM whole molecule

**Lane 5** : Normal rabbit serum

Lysates/proteins at 0.05 µg per lane.

### Secondary

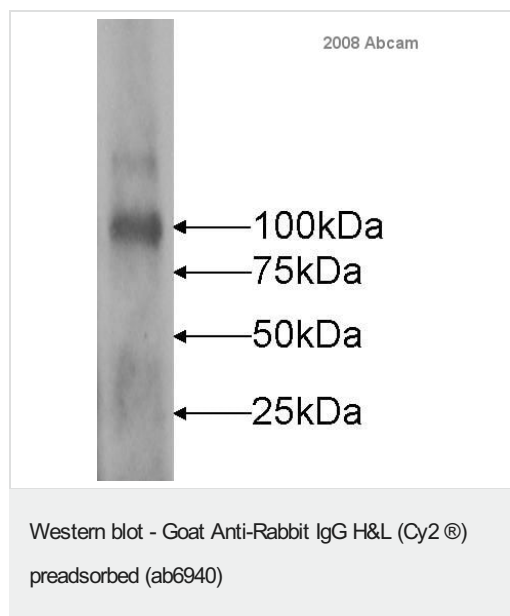
**All lanes** : Peroxidase-conjugated donkey anti-goat IgG at 1/40000 dilution

Performed under reducing conditions.

**Observed band size:** 23,25,50,70 kDa

Incubated with the primary antibody for 1 hour at room temperature.

Incubated with the secondary antibody for 30 minutes at room temperature.



ab6940 was used at dilution 1/10000 with the primary antibody **ab47840** in WB. See the review on **ab47840**.

**Please note:** All products are "FOR RESEARCH USE ONLY. NOT FOR USE IN DIAGNOSTIC PROCEDURES"

#### Our Abpromise to you: Quality guaranteed and expert technical support

---

- Replacement or refund for products not performing as stated on the datasheet
- Valid for 12 months from date of delivery
- Response to your inquiry within 24 hours
- We provide support in Chinese, English, French, German, Japanese and Spanish
- Extensive multi-media technical resources to help you
- We investigate all quality concerns to ensure our products perform to the highest standards

If the product does not perform as described on this datasheet, we will offer a refund or replacement. For full details of the Abpromise, please visit <https://www.abcam.com/abpromise> or contact our technical team.

#### Terms and conditions

---

- Guarantee only valid for products bought direct from Abcam or one of our authorized distributors