

## Product datasheet

# Goat Anti-Rabbit IgG H&L (Cy3 ®) preadsorbed ab97075

[39 References](#) [2 Images](#)

### Overview

<b>Product name</b>	Goat Anti-Rabbit IgG H&L (Cy3 ®) preadsorbed
<b>Host species</b>	Goat
<b>Target species</b>	Rabbit
<b>Specificity</b>	By immunoelectrophoresis and ELISA this antibody reacts specifically with Rabbit IgG and with light chains common to other Rabbit immunoglobulins. No antibody was detected against non immunoglobulin serum proteins. Reduced cross-reactivity to bovine, chicken, goat, horse, human, mouse, pig and rat IgG was detected.
<b>Tested applications</b>	<b>Suitable for:</b> IHC-P, ICC/IF, Flow Cyt
<b>Minimal cross-reactivity</b>	Chicken, Cow, Horse, Human, Mouse, Pig, Rat <a href="#">more details</a>
<b>Immunogen</b>	Other Immunogen Type corresponding to Rabbit IgG.
<b>Conjugation</b>	Cy3 ®. Ex: 552nm, Em: 565nm

### Properties

<b>Form</b>	Liquid
<b>Storage instructions</b>	Shipped at 4°C. Store at +4°C.
<b>Storage buffer</b>	pH: 6.8 Preservative: 0.09% Sodium azide Constituents: 0.2% BSA, PBS
<b>Purity</b>	Immunogen affinity purified
<b>Purification notes</b>	Antiserum was cross absorbed using bovine, chicken, horse, human, mouse, pig and rat immunosorbents to remove cross reactive antibodies. This antibody was isolated by affinity chromatography using antigen coupled to agarose beads and conjugated to Cy3 ®.
<b>Clonality</b>	Polyclonal
<b>Isotype</b>	IgG

## Applications

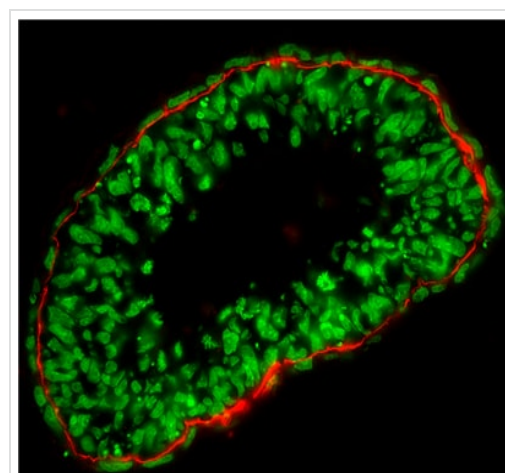
### The Abpromise guarantee

Our **Abpromise guarantee** covers the use of ab97075 in the following tested applications.

The application notes include recommended starting dilutions; optimal dilutions/concentrations should be determined by the end user.

Application	Abreviews	Notes
IHC-P		1/50 - 1/500.
ICC/IF		1/50 - 1/500.
Flow Cyt		1/100 - 1/1000.

## Images



Immunohistochemistry (Frozen sections) - Goat  
Anti-Rabbit IgG H&L (Cy3 ®) preadsorbed (ab97075)

Courtesy of Dr. Shaohua Li, UMDNJ-Robert Wood  
Johnson Medical School

Sample: mouse embryonic stem cell-differentiated embryoid  
bodies (EBs)

#### Preparation:

Fix in 3%PFA in PBS for 30 min at RT

Incubate in 7.5% sucrose-PBS for 3h at RT

Incubate in 15% sucrose-PBS at 4 degree Celsius overnight

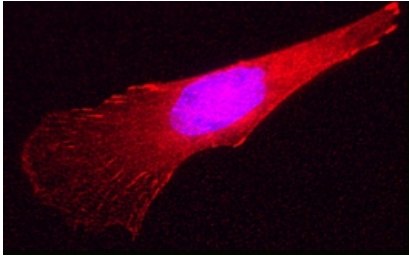
Embed the EBs in tissue-Tek OCT compound

Cut frozen sections to 4-20 µm thickness

Primary antibody: Rabbit anti-laminin alpha 1, 1:400

Secondary antibody:Goat polyclonal Secondary Antibody to Rabbit  
IgG - H&L (Cy3®) (ab97075), 1:100

Nuclei were counterstained with SYTO 16



Immunocytochemistry/ Immunofluorescence - Goat  
Anti-Rabbit IgG H&L (Cy3 ®) preadsorbed (ab97075)  
Courtesy of Dr. Shaohua Li, UMDNJ-Robert Wood  
Johnson Medical School

Image: Courtesy of Dr. Shaohua Li, UMDNJ-Robert Wood Johnson  
Medical School

Sample: mouse endoderm cell

Preparation:

Fix in 3% PFA in PBS for 30 min at RT

Primary antibody: Rabbit anti-talin ([ab71333](#)), 1:100

Secondary antibody: Goat polyclonal Secondary Antibody to Rabbit  
IgG - H&L (Cy3® 488) preadsorbed (ab97075), 1:100

**Please note:** All products are "FOR RESEARCH USE ONLY. NOT FOR USE IN DIAGNOSTIC PROCEDURES"

### Our Abpromise to you: Quality guaranteed and expert technical support

---

- Replacement or refund for products not performing as stated on the datasheet
- Valid for 12 months from date of delivery
- Response to your inquiry within 24 hours
- We provide support in Chinese, English, French, German, Japanese and Spanish
- Extensive multi-media technical resources to help you
- We investigate all quality concerns to ensure our products perform to the highest standards

If the product does not perform as described on this datasheet, we will offer a refund or replacement. For full details of the Abpromise, please visit <https://www.abcam.com/abpromise> or contact our technical team.

### Terms and conditions

---

- Guarantee only valid for products bought direct from Abcam or one of our authorized distributors