

Product datasheet

Rabbit monoclonal [H19-5] Anti-Human kappa light chain ab125919

Recombinant RabMAb

[3 References](#) [6 Images](#)

Overview

Product name	Rabbit monoclonal [H19-5] Anti-Human kappa light chain
Host species	Rabbit
Target species	Human
Tested applications	Suitable for: WB, ELISA
Immunogen	Other Immunogen Type corresponding to Human Kappa light chain.

Properties

Form	Liquid
Storage instructions	Shipped at 4°C. Store at +4°C short term (1-2 weeks). Upon delivery aliquot. Store at -20°C or -80°C. Avoid freeze / thaw cycle.
Storage buffer	pH: 7.2 Preservative: 0.01% Sodium azide Constituents: 0.05% BSA, 99% PBS
Purity	Protein A purified
Clonality	Monoclonal
Clone number	H19-5
Isotype	IgG
General notes	<p>Mouse, Rat: We have preliminary internal testing data to indicate this antibody may not react with these species. Please contact us for more information.</p> <p>This product is a recombinant monoclonal antibody, which offers several advantages including:</p> <ul style="list-style-type: none"> - High batch-to-batch consistency and reproducibility - Improved sensitivity and specificity - Long-term security of supply - Animal-free production <p>For more information see here.</p> <p>Our RabMAb[®] technology is a patented hybridoma-based technology for making rabbit monoclonal antibodies. For details on our patents, please refer to RabMAb[®] patents.</p>

Applications

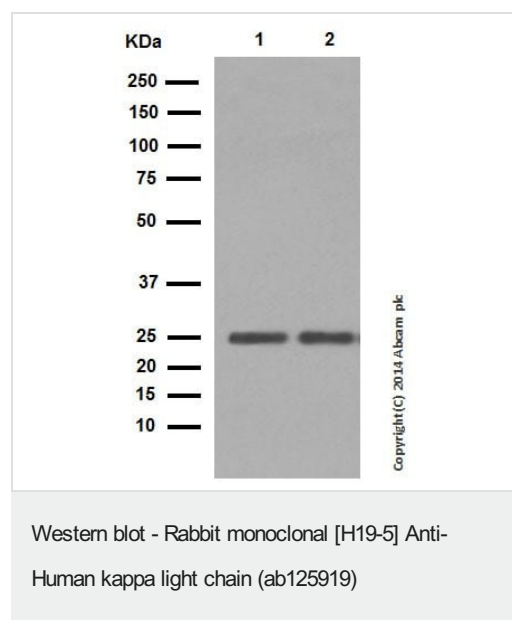
The Abpromise guarantee

Our **Abpromise guarantee** covers the use of ab125919 in the following tested applications.

The application notes include recommended starting dilutions; optimal dilutions/concentrations should be determined by the end user.

Application	Abreviews	Notes
WB		1/5000. For unpurified use at 1/1000 - 1/10000.
ELISA		Use a concentration of 1 µg/ml. For unpurified use at 1/1000 - 1/10000.

Images



All lanes : Rabbit monoclonal [H19-5] Anti-Human kappa light chain (ab125919) at 1/5000 dilution

Lane 1 : Human spleen tissue lysate

Lane 2 : Human thymus tissue lysate

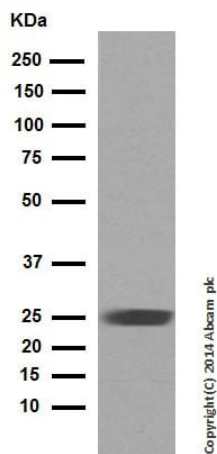
Lysates/proteins at 20 µg per lane.

Secondary

All lanes : Anti-Rabbit IgG (HRP), specific to the non-reduced form of IgG at 1/1000 dilution

Observed band size: 25 kDa

Blocking and diluting buffer: 5% NFDM/TBST.



Western blot - Rabbit monoclonal [H19-5] Anti-Human kappa light chain (ab125919)

Rabbit monoclonal [H19-5] Anti-Human kappa light chain (ab125919) at 1/5000 dilution (purified) + Human tonsil tissue lysate at 20 µg

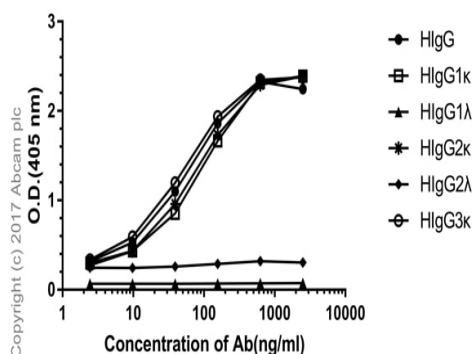
Secondary

Anti-Rabbit IgG (HRP), specific to the non-reduced form of IgG at 1/1000 dilution

Observed band size: 25 kDa

Blocking and diluting buffer: 5% NFDM/TBST.

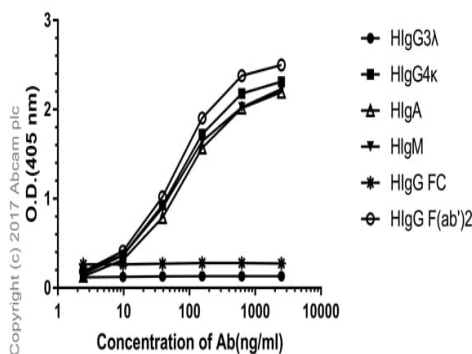
Direct ELISA antibody dose-response curve



ELISA - Rabbit monoclonal [H19-5] Anti-Human kappa light chain (ab125919)

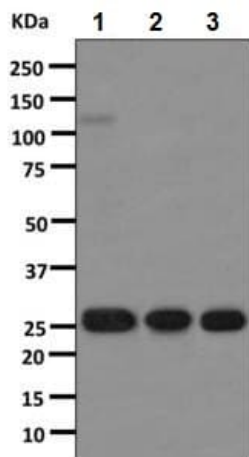
Direct ELISA antibody dose-response curve using ab125919 between 0-2500 ng/ml. Antigen concentration of 1000 ng/mL. An alkaline phosphatase-conjugated goat anti-rabbit IgG (H+L) (1/2500) was used as the secondary antibody.

Direct ELISA antibody dose-response curve



ELISA - Rabbit monoclonal [H19-5] Anti-Human kappa light chain (ab125919)

Direct ELISA antibody dose-response curve using ab125919 between 0-2500 ng/ml. Antigen concentration of 1000 ng/mL. An alkaline phosphatase-conjugated goat anti-rabbit IgG (H+L) (1/2500) was used as the secondary antibody.



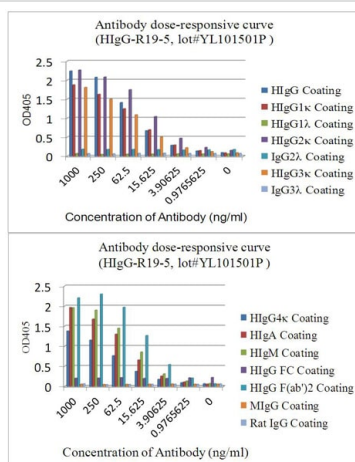
Western blot - Rabbit monoclonal [H19-5] Anti-Human kappa light chain (ab125919)

All lanes : Rabbit monoclonal [H19-5] Anti-Human kappa light chain (ab125919) (unpurified)

Lane 1 : Human spleen tissue lysate

Lane 2 : Human thymus tissue lysate

Lane 3 : Human tonsil tissue lysate



ELISA - Rabbit monoclonal [H19-5] Anti-Human kappa light chain (ab125919)

ELISA dose-responsive curve using purified ab125919 at a range of concentrations.

Antigen concentration: 1000ng/ml.

Secondary antibody: Alkaline Phosphatase-conjugated AffiniPure Goat Anti-Rabbit IgG (H+L), 1/2500.

Please note: All products are "FOR RESEARCH USE ONLY. NOT FOR USE IN DIAGNOSTIC PROCEDURES"

Our Abpromise to you: Quality guaranteed and expert technical support

- Replacement or refund for products not performing as stated on the datasheet
- Valid for 12 months from date of delivery
- Response to your inquiry within 24 hours
- We provide support in Chinese, English, French, German, Japanese and Spanish
- Extensive multi-media technical resources to help you
- We investigate all quality concerns to ensure our products perform to the highest standards

If the product does not perform as described on this datasheet, we will offer a refund or replacement. For full details of the Abpromise, please visit <https://www.abcam.com/abpromise> or contact our technical team.

Terms and conditions

- Guarantee only valid for products bought direct from Abcam or one of our authorized distributors