

# Rabbit Anti-Mouse IgG H&L (HRP) ab97046

★★★★★ [3 Abreviews](#) [183 References](#) [4 Images](#)

### Overview

Product name	Rabbit Anti-Mouse IgG H&L (HRP)
Host species	Rabbit
Target species	Mouse
Specificity	By immunoelectrophoresis and ELISA this antibody reacts specifically with mouse IgG and with light chains common to other mouse immunoglobulins. No antibody was detected against non-immunoglobulin serum proteins.
Tested applications	<b>Suitable for:</b> ICC, IHC-P, ELISA, WB
Immunogen	Chemical/ Small Molecule corresponding to IgG. Purified mouse IgG
Conjugation	HRP

### Properties

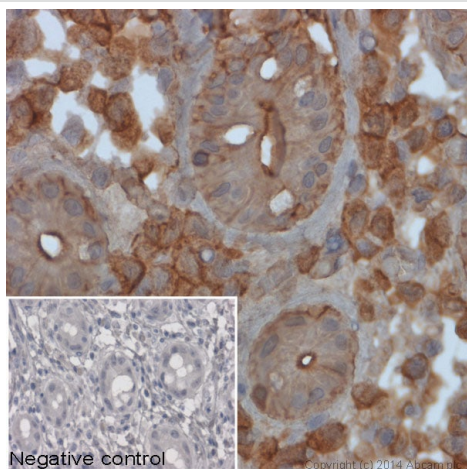
Form	Liquid
Storage instructions	Shipped at 4°C. Store at +4°C.
Storage buffer	pH: 6.8 Constituents: 0.2% BSA, PBS, 0.05% CMIT/MIT based preservative
Purity	Immunogen affinity purified
Purification notes	This antibody was isolated by affinity chromatography using antigen coupled to agarose beads and conjugated to Horse Radish Peroxidase (HRP).
Conjugation notes	Molar enzyme/ antibody protein ratio is 4:1
Clonality	Polyclonal
Isotype	IgG
General notes	Part of the <b>AbExcel</b> range.

### Applications

**The Abpromise guarantee** Our **Abpromise guarantee** covers the use of ab97046 in the following tested applications.  
The application notes include recommended starting dilutions; optimal dilutions/concentrations should be determined by the end user.

Application	Abreviews	Notes
ICC		Use at an assay dependent dilution.
IHC-P		1/200 - 1/5000.
ELISA		1/10000 - 1/100000. (Primary)
WB	★★★★★ (3)	1/2000 - 1/20000. (Colorimetric). (Chemiluminescent 1/10000 - 1/50000).

## Images

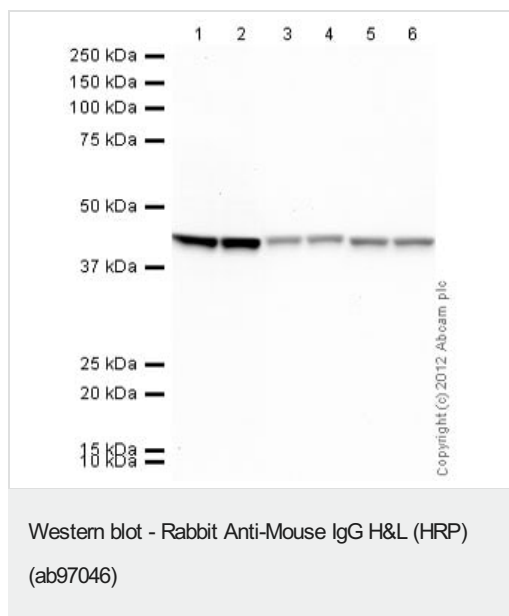


Immunohistochemistry (Formalin/PFA-fixed paraffin-embedded sections) - Rabbit Anti-Mouse IgG H&L (HRP) (ab97046)

IHC image of beta actin staining in human colon formalin fixed paraffin embedded tissue section\*. The section was pre-treated using pressure cooker heat mediated antigen retrieval with sodium citrate buffer (pH6) for 30mins. The section was incubated with **ab8224**, 3µg/ml overnight at +4°C. An HRP-conjugated secondary (ab97046, 1/500 dilution) was used for 1hr at room temperature. The section was counterstained with haematoxylin and mounted with DPX.

The inset negative control image is taken from an identical assay without primary antibody.

\*Tissue obtained from the Human Research Tissue Bank, supported by the NIHR Cambridge Biomedical Research Centre



**All lanes :** Anti-beta Actin antibody [mAbcam 8226] - Loading Control (**ab8226**) at 1 µg/ml

**Lanes 1-6 :** HeLa (Human epithelial carcinoma cell line) Whole Cell Lysate  
Lysates/proteins at 10 µg per lane.

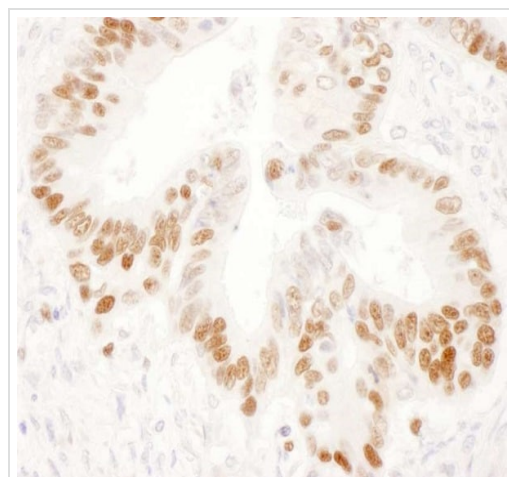
### Secondary

**Lanes 1 - 2 :** Rabbit polyclonal Secondary Antibody to Mouse IgG - H&L (HRP) (ab97046) at 1/2000 dilution

**Lanes 3 - 4 :** Rabbit polyclonal Secondary Antibody to Mouse IgG - H&L (HRP) (ab97046) at 1/10000 dilution

**Lanes 5 - 6 :** Rabbit polyclonal Secondary Antibody to Mouse IgG - H&L (HRP) (ab97046) at 1/20000 dilution

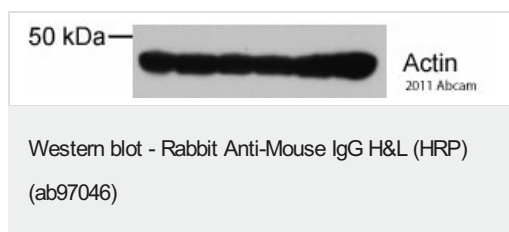
Developed using the



Immunohistochemistry (Formalin/PFA-fixed paraffin-embedded sections) - Rabbit Anti-Mouse IgG H&L (HRP) (ab97046)

Formalin-fixed, paraffin embedded human stomach tissue was stained for p53 using a mouse Anti-p53 antibody.

ab97046 was used as secondary antibody at 1/100 dilution. DAB staining.



Sample: Human Cell lysate - whole cell (human glioma cells),  
Loading amount: 20 µg, Specification: human glioma cells

Blocking step: Milk as blocking agent for 1 hour, Concentration: 5 %, Temperature: 25°C

Other product details: 1st Ab Dilution 1/5000 anti-actin Ab,  
Incubation time: 16 hours, Temperature: 4°C

Secondary antibody: ab97046 used at 1:20,000

Bands: Specific: 45 kDa

Notes: primary Ab (anti-actin) was used as a loading control in 6

human glioma cell lines

*This image is courtesy of an anonymous Abreview*

**Please note:** All products are "FOR RESEARCH USE ONLY. NOT FOR USE IN DIAGNOSTIC PROCEDURES"

#### **Our Abpromise to you: Quality guaranteed and expert technical support**

---

- Replacement or refund for products not performing as stated on the datasheet
- Valid for 12 months from date of delivery
- Response to your inquiry within 24 hours
- We provide support in Chinese, English, French, German, Japanese and Spanish
- Extensive multi-media technical resources to help you
- We investigate all quality concerns to ensure our products perform to the highest standards

If the product does not perform as described on this datasheet, we will offer a refund or replacement. For full details of the Abpromise, please visit <https://www.abcam.com/abpromise> or contact our technical team.

#### **Terms and conditions**

---

- Guarantee only valid for products bought direct from Abcam or one of our authorized distributors