

Product datasheet

Rabbit Anti-Sheep IgG H&L (Texas Red ®) ab6745

[6 References](#) [1 Image](#)

Overview

| | |
|---------------------|---|
| Product name | Rabbit Anti-Sheep IgG H&L (Texas Red ®) |
| Host species | Rabbit |
| Target species | Sheep |
| Tested applications | Suitable for: Immunomicroscopy, Flow Cyt, IHC-P, IHC-Fr, ICC/IF, ELISA |
| Immunogen | Sheep IgG whole molecule |
| Conjugation | Texas Red ®. Ex: 596nm, Em: 620nm |

Properties

| | |
|----------------------|--|
| Form | Liquid |
| Storage instructions | Shipped at 4°C. Store at +4°C short term (1-2 weeks). Upon delivery aliquot. Store at -20°C or -80°C. Avoid freeze / thaw cycle. |
| Storage buffer | pH: 6.50 Preservative: 0.01% Sodium azide Constituents: 0.878% Sodium chloride, 1% BSA, 0.424% Tripotassium orthophosphate |
| Purity | Affinity purified |
| Purification notes | This product was prepared from monospecific antiserum by immunoaffinity chromatography using Sheep IgG coupled to agarose beads followed by solid phase adsorption(s) to remove any unwanted reactivities. |
| Conjugation notes | This product was prepared from monospecific antiserum by immunoaffinity chromatography using Sheep IgG coupled to agarose beads followed by solid phase adsorption(s) to remove any unwanted reactivities |
| Clonality | Polyclonal |
| General notes | Texas Red™ Sulfonil Chloride (Molecular Weight 625 daltons) Absorption Wavelength: 596 nm Emission Wavelength: 620 nm Fluorochrome/Protein Ratio: 4.9 moles Texas Redä per mole of Rabbit IgG |

Applications

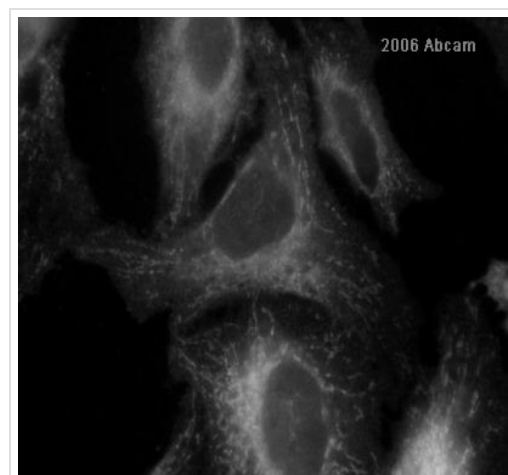
The Abpromise guarantee

Our **Abpromise guarantee** covers the use of ab6745 in the following tested applications.

The application notes include recommended starting dilutions; optimal dilutions/concentrations should be determined by the end user.

| Application | Abreviews | Notes |
|------------------|-----------|--|
| Immunomicroscopy | | Use at an assay dependent concentration. |
| Flow Cyt | | Use at an assay dependent dilution. |
| IHC-P | | Use at an assay dependent concentration. |
| IHC-Fr | | Use at an assay dependent concentration. |
| ICC/IF | | 1/1000 - 1/5000. PubMed: 17895403 |
| ELISA | | 1/10000 - 1/50000. |

Images



Immunocytochemistry/ Immunofluorescence - Rabbit
Anti-Sheep IgG H&L (Texas Red ®) (ab6745)

Ab6745 was used at dilution 1/100 with the primary antibody **ab30524** in ICC/IF. See the review on **ab30524**.

Please note: All products are "FOR RESEARCH USE ONLY. NOT FOR USE IN DIAGNOSTIC PROCEDURES"

Our Abpromise to you: Quality guaranteed and expert technical support

- Replacement or refund for products not performing as stated on the datasheet
- Valid for 12 months from date of delivery
- Response to your inquiry within 24 hours
- We provide support in Chinese, English, French, German, Japanese and Spanish
- Extensive multi-media technical resources to help you
- We investigate all quality concerns to ensure our products perform to the highest standards

If the product does not perform as described on this datasheet, we will offer a refund or replacement. For full details of the Abpromise, please visit <https://www.abcam.com/abpromise> or contact our technical team.

Terms and conditions

- Guarantee only valid for products bought direct from Abcam or one of our authorized distributors