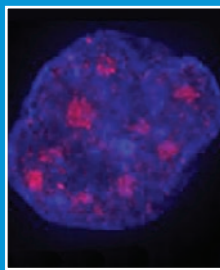


Yeast Product List - Cerevisiae	Clonality	Applications	Host	Datasheet www.abcam.com/ab...
RTF1	P	WB	Ms	22230
Saccharomyces cerevisiae	P	Dot, ELISA, WB	Rb	19731
Saccharomyces cerevisiae	P	Dot, ELISA, WB	Gt	25813
SAP30	P	IP, WB	Rb	15035
SCH9	P	ELISA, WB	Rb	56203
Smt3	P	ELISA, WB	Rb	14405
SNF5	P	WB	Ms	24425
SPT3	P	ELISA, WB	Rb	63811
SRB4	P	ELISA, WB	Rb	63812
STE2	P	WB	Ms	22083
Sua7p	P	ELISA, WB	Rb	63909
SWI2 / SNF2	P	WB	Ms	22012
SWI2 / SNF2	P	WB	Ms	22013
TAF10	P	ELISA, WB	Rb	64061
TAF11	P	ELISA, WB	Rb	64066
Taf4	P	ELISA, WB	Rb	63910
TAF5	P	EM, WB	Rb	51468
TAF5	P	WB	Rb	51470
TAF6	P	ELISA, WB	Rb	64060
TAF9	P	WB	Ms	24428
TATA binding protein TBP [58C9]	M	IP, WB	Ms	61411
TCEB1	P	WB	Ms	52876
TCP1 alpha [91A]	M	IF, IP, WB	Rt	2797
TFG2	P	ELISA, WB	Rb	64067
Toa1	P	ELISA, WB	Rb	64274
Transcriptional regulator UME6	P	WB	Chk	37630
Tubulin [YL1/2] - Loading Control	M	ELISA, ICC/IF, IHC-Fr, IHC-P, IHC (Methanol fixed cells), IHC (PFA)	Rt	6160
TUP1 [Clone 10]	M	WB	Ms	24313
Ubiquitin	P	IHC-FoFr, IP, WB	Rb	19247
ULP-1	P	ELISA, ICC/IF, WB	Rb	34668
Urm1	P	ELISA, WB	Rb	4755
Yaf9	P	WB	Rb	4468
YPK2 - Aminoterminal end	P	ELISA, WB	Rb	58628

And many more at: www.abcam.com



RNA polymerase II CTD repeat YSPSTSPS (phospho S2) antibody - ChIP Grade (ab5095)

(Used in Western blotting of Cell lysate Saccharomyces cerevisiae - whole cell (WT CB010))

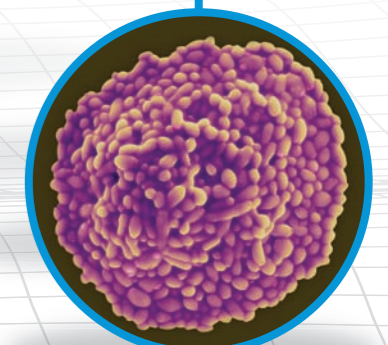
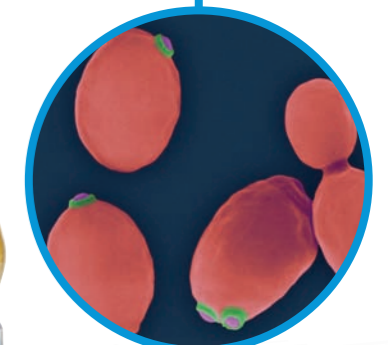
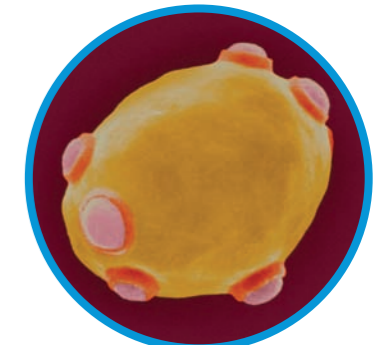
Clonality: P Applications: ChIP, ICC/IF, IHC-P, WB Host: Rb

This product has been given a 5***** abreview rating: 'Excellent'.

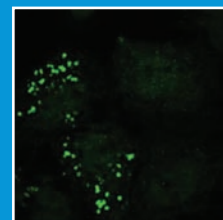
RNA polymerase II carboxy-terminal domain (CTD) interacts with a large multisubunit complex that contains TATA-binding protein (TBP) and is an integral part of the transcription initiation complex. Please visit www.abcam.com/ for more antibodies to RNA polymerase II.

Yeast Product List - Pombe	Clonality	Applications	Host	Datasheet www.abcam.com/ab...
Ago1	P		Rb	18190
ATF1 - S.pombe [ATF1 2A9/8]	M	IP, WB	Ms	18123
beta Actin [mAbcam 8224] - Loading Control	M	WB	Ms	8224
beta Tubulin [TU-06]	M	ELISA, ICC, IP, WB	Ms	7792
CAF1 large subunit	P	WB	Ms	21860
Cdc13 [6F11/2]	M	IP, WB	Ms	10873
Cdc2 [Y100.4]	M	WB	Ms	5467
Chp1 - ChIP Grade	P	ChIP, WB	Rb	18191
Cig2 [CIG 3A11/5]	M	ELISA, IP, WB	Ms	10881
Fibrillarin [38F3] - Nucleolar Marker	M	ICC, ICC/IF, IF, IHC-Fr, IHC-P, ISH, WB	Ms	4566
GSK3 (alpha + beta) (phospho Y279 + Y216) [0.T.57]	M	ICC, WB	Ms	33021
HIR3	P	WB	Rb	61639
Histone H2A (yeast) (phospho S129)	P	WB	Rb	17353
Histone H2A	P	WB	Rb	13923
Histone H3 (acetyl K9) - ChIP Grade	P	ChIP, ChIPseq, Dot, ICC/IF, WB	Rb	4441
Histone H3 (di methyl K9) [mAbcam 1220] - ChIP Grade	M	ChIP, Flow Cyt, ICC/IF, IHC-P, IP, WB	Ms	1220
Histone H3 (mono methyl K9) - ChIP Grade	P	ChIP, Flow Cyt, IF, IHC-P, WB	Rb	9045
Histone H3 (tri methyl K36) - ChIP Grade	P	ChIP, ChIP/Chip, ICC/IF, IHC-P, WB	Rb	9050
Histone H3 - ChIP Grade	P	ChIP, ChIP/Chip, ChIPseq, Dot, Flow Cyt, ICC, ICC/IF, IF, IHC-P, IP, WB	Rb	1791
Histone H4 (acetyl K12) - Limited Availability and ChIP Grade	P	ChIP, ELISA, ICC/IF, IF, IHC-P, IP, WB	Rb	1761
Histone H4 (acetyl K8) - ChIP Grade	P	ChIP, ICC/IF, IHC-P, WB	Rb	15823
Histone H4 (di methyl K20)	P	ICC/IF, WB	Rb	9052
Histone H4 (tri methyl K20) - ChIP Grade	P	ChIP, Flow Cyt, IF, IHC-Fr, IHC (PFA fixed), WB	Rb	9053
Histone H4	P	ELISA, IF	Rb	2423
Hsp70 + Hsc70 [BB70]	M	IP, SDS-PAGE, WB	Ms	53496
INO80	P	WB	Ms	22238
KMT7 / SETD7/ SET7/9	P	WB	Rb	3826
MLO3	P	WB	Ms	21859
PAXH	P	WB	Ms	21861
PCNA [PC8]	M	IHC-P, IP, WB	Ms	20237
POLIII	P	WB	Ms	22236
Rad17	P	WB	Rb	9748
Rad22	P	ICC/IF, IP, WB	Rb	63800
Rhp51	P	ICC/IF, IP, WB	Rb	63799
RNA polymerase II CTD repeat YSPSTSPS (phospho S2) - ChIP Grade	P	ChIP, ICC/IF, IHC-P, WB	Rb	5095
RNA polymerase II CTD repeat YSPSTSPS (phospho S5) - ChIP Grade	P	ChIP, ChIPseq, ICC/IF, IHC-Fr, IHC-P, WB	Rb	5131
RNA polymerase II CTD repeat YSPSTSPS [4H8] - ChIP Grade	M	ChIP, ELISA, ICC/IF, IP, WB	Ms	5408
RNA-dependent RNA polymerase (RDRP)	P	WB	Rb	4577
Rpt1	P	WB	Rb	22678
SpUlp1	P	WB	Rb	45511
SpUlp2	P	ELISA, WB	Rb	37452
SUC1 [AA10.2]	M	IP, WB	Ms	24294
Tubulin [YL1/2] - Loading Control	M	ELISA, ICC/IF, IHC-Fr, IHC-P, IHC (Methanol fixed cells), IHC (PFA)	Rt	6160
YPK2 - Aminoterminal end	P	ELISA, WB	Rb	58628

Yeast: Antibodies with cross-reactivity



Yeast Product List - Cerevisiae	Clonality	Applications	Host	Datasheet www.abcam.com/ab...
ABF1	P	WB	Ms	21760
Alcohol Dehydrogenase	P	Conjugation, Dot, ELISA, IP, WB	Rb	34680
ALDH1A1	P	Conjugation, ELISA, IHC-P, IP, WB	Rb	6192
Apg12	P	ELISA, WB	Rb	4752
Arp5	P	WB	Rb	12099
Arp8	P	WB	Rb	12098
ARX1	P	WB	Rb	74135
ATG8	P	ELISA, WB	Rb	4753
beta Actin [mAbcam 8226] (HRP) - Loading Control	M	WB	Ms	20272
beta Tubulin	P	ICC/IF, IHC-P, IP, WB	Rb	15568
CDC11	P	IHC-P, WB	Rb	66452
CDC3 - Aminoterminal end	P	IHC-P, WB	Rb	66450
Cdc6 [Cdc6 9H8/5]	M	IP, WB	Ms	20150
Clathrin light chain [CON.1]	M	ICC/IF, IP, WB	Ms	11332
c-Myc [9E11] - ChIP Grade	M	ChIP, IHC-Fr, IHC-P, IP, WB	Ms	56
COQ7	P	WB	Chk	25912
Cytosine deaminase	Shp	ELISA, WB	Shp	35251
DIG2	P	WB	Ms	22086
DLS1	P	WB	Ms	22017
Dsk2	P	WB	Rb	4119
Eaf3 - ChIP Grade	P	ChIP, IP, WB	Rb	4467
eIF2 alpha (phospho S51)	P	WB	Rb	4837
Elongin A	P	WB	Ms	22093
ERK1 + ERK2 (phospho T183 + Y185) - [MAPK-YT]	M	ELISA, ICC/IF, IHC-P, IP, WB	Ms	50011
FCP1	P	WB	Ms	21833
Fibrillarin [28F2] - Nucleolar Marker	M	IF, IP, WB	Ms	4575
Fkh2p	P	WB	Ms	21936
Flotillin 2	P	WB	Rb	4466
GAL4 - ChIP Grade	P	ChIP, WB	Rb	1396
GAPDH (HRP) - Loading Control	P	WB	Rb	9385
GCN5p	P	ELISA, WB	Rb	63810
Glucose 6 Phosphate Dehydrogenase - (HRP)	P	Dot, ELISA, EM, WB	Gt	34601
HAP4	P	WB	Ms	21862
Hexokinase (HRP)	P	Dot, ELISA, IM, WB	Rb	34588
Hho1	P	WB	Rb	71833
hHR23A	P	WB	Ms	22090
HIR3	P	WB	Rb	61639
Histone H2A (phospho S122)	P	WB	Rb	3599
Histone H2A (phospho S129) - ChIP Grade	P	ChIP, WB	Rb	15083
Histone H2B - ChIP Grade	P	ChIP, ICC/IF, IHC-P, WB	Rb	1790
Histone H3 - HRP (HRP)	P	WB	Rb	21054
Histone H3 (acetyl K18) - ChIP Grade	P	ChIP, ChIP/Chip, CHIPseq, ICC/IF, IHC-P, WB	Rb	1191
Histone H3 (di methyl K36) - ChIP Grade	P	ChIP, WB	Rb	9049
Histone H3 (mono methyl K36) - ChIP Grade	P	ChIP, ICC, IF, WB	Rb	9048
Histone H3 (mono methyl K79) - ChIP Grade	P	ChIP, ICC, ICC/IF, IF, IHC-P, WB	Rb	2886
Histone H3 (mono methyl R2) - ChIP Grade	P	ChIP, ChIP/Chip, IHC-P, WB	Rb	15584
Histone H3 (tri methyl K36) - ChIP Grade	P	ChIP, ChIP/Chip, ICC/IF, IHC-P, WB	Rb	9050



Antibody to HA tag – ChIP Grade (ab9110)

(Used in Western blotting of lysates from CCL13 cells transfected with an HA-tagged Spartin then stimulated with EGF).

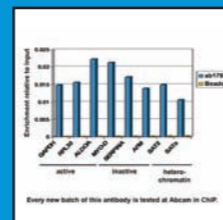
Clonality	Applications	Host
P	ChIP, ChIP/Chip, ELISA, ICC/IF, IP, WB	Rb

The HA tag, which is derived from the human influenza hemagglutinin (HA) protein is extensively used as a general epitope tag in expression vectors.

This product has been given a 5★ abreview rating: 'Excellent'.

Please visit www.abcam.com for more antibodies to epitope tags.

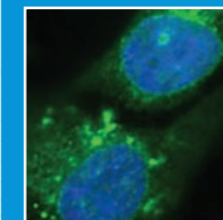
Yeast Product List - Cerevisiae	Clonality	Applications	Host	Datasheet www.abcam.com/ab...
Histone H3 (tri methyl K4) - ChIP Grade	P	ChIP, ChIP/Chip, Flow Cyt, ICC, ICC/IF, IHC-Fr, IHC-P, IP, WB	Rb	8580
Histone H3 (tri methyl K79) - ChIP Grade	P	ChIP, ChIP/Chip, ICC/IF, WB	Rb	2621
Histone H3 (tri methyl K9) - ChIP Grade	P	ChIP, ChIP/Chip, ICC/IF, IHC-Fr, IHC-P, WB	Rb	8898
Histone H3 - ChIP Grade	P	ChIP, ChIP/Chip, CHIPseq, Dot, Flow Cyt, ICC, ICC/IF, IF, IHC-P, IP, WB	Rb	1791
Histone H3 - ChIP Grade	P	ChIP, IHC-P, WB	Rb	46765
Histone H4 (acetyl K12) - ChIP Grade	P	ChIP, ELISA, ICC/IF, IF, IHC-P, IP, WB	Rb	1761
Histone H4 (acetyl K8) - ChIP Grade	P	ChIP, ICC/IF, IHC-P, WB	Rb	15823
Histone H4 (acetyl K91) - ChIP Grade	P	ChIP, CHIPseq, WB	Rb	4627
Histone H4	P	ICC/IF, IHC-P, WB	Rb	10158
Hmo1	P	WB	Rb	71834
Homocitrate Synthase [31F5]	M	ICC/IF, WB	Ms	30318
Hsp104	P	ICC, IP, WB	Rb	2924
Hsp40 [2A7.H6]	M	ELISA, IP, WB	Ms	74442
Hsp60	P	WB	Rb	69487
Hsp70 + Hsc70 [BB70]	M	IHC-P, WB	Ms	59467
Hsp70 [3A3]	M	ICC, IHC-P, IP, WB	Ms	5439
Htz1 (acetyl K3 + K8 + K10 + K14)	P	WB	Shp	43983
Htz1 - ChIP Grade	P	ChIP, IP, WB	Rb	4626
Hub1	P	ELISA, WB	Rb	4754
IME1	P	ICC/IF, WB	Chk	17711
IOC2	P	WB	Ms	22018
IOC3	P	WB	Ms	22019
IOC4	P	WB	Ms	22020
ISW2	P	WB	Ms	22014
ITC1	P	WB	Ms	22015
KAT4 / TBP Associated Factor 1	P	WB	Ms	24427
KEX2 protease [3B5]	M	I-ELISA, WB	Ms	34772
KIN28	P	WB	Rb	24702
Lys 20p + 21p [31F5]	M	IF, WB	Ms	4574
MAD1	P	IF, WB	Rb	11691
MAD2	P	IF, WB	Rb	11690
Mer2 (phospho S30)	P	ELISA, WB	Rb	47254
Monopolin	P	WB	Rb	3911
Mre11 - ChIP Grade	P	ChIP	Rb	12159
MSG5	P	WB	Ms	22087
Ndd1p	P	WB	Ms	21937
Nedd8	P	ELISA, WB	Rb	4751
Nop2p [22G1] - Nucleolar Marker	M	IF, WB	Ms	4638
Nop5p + Nop58p [34B12] - Nucleolar Marker	M	IF, IP, WB	Ms	4639
Nop5p + Nop6p [37C12] - Nucleolar Marker	M	IF, IP	Ms	4640
Nsp1p [32D6] - Nuclear Envelope and Nuclear Pore Marker	M	IF, WB	Ms	4641
Nsr1p [31C4] - Nucleolar Marker	M	IF, WB	Ms	4642
Nuclear Pore Complex Proteins [Mab414]	M	EM, ICC/IF, IHC-Fr, IP, WB	Ms	24609
Nuclear Pore O-Linked Glycoprotein [RL1] - Nuclear Pore Marker	M	BL, IF, IP, WB	Ms	2734
Nup53	P	IF, WB	Rb	11692



Histone modifications and related proteins

Due to sequence homology, a large number of our Histone antibodies are predicted to react with many species and though it may not necessarily be stated on the datasheet, they may react with yeast.

Yeast Product List - Cerevisiae	Clonality	Applications	Host	Datasheet www.abcam.com/ab...
ORC2 [SB46]	M	IP, WB	Ms	31930
Oxa1	P	WB	Ms	21863
PAF1	P	WB	Ms	52720
pan methyl Lysine (methyl K pan) - ChIP Grade	P	ChIP, ELISA, WB	Rb	7315
PCNA [5E6/2]	M	ELISA, IP, WB	Ms	70472
PD1 [38H8] - ER and Nuclear Envelope Marker	M	ICC/IF, WB	Ms	4644
Phosphotyrosine [PY72]	M	AP, IF, IP, WB	Ms	24755
PKH1	P	ELISA, WB	Rb	55933
Pma1 [40B7] - Plasma Membrane Marker	M	IF, WB	Ms	4645
PPM1B	P	WB	Rb	71570
Pre 60S factor REI1	P	ICC, WB	Rb	75361
Pre3	P	WB	Ms	43110
Pre4	P	WB	Ms	21639
PRE7	P	WB	Ms	43700
Pre8	P	WB	Ms	21751
Proteasome 19S S4	P	IP, WB	Rb	3317
Proteasome 19S S5A	P	WB	Rb	56851
Proteasome 20S alpha + beta	P	ICC/IF, IHC-Fr, IP, WB	Rb	22673
Proteasome 20S alpha 1+2+3+5+6+7 [MCP231]	M	ELISA, WB	Ms	22674
PSMC5	P	WB	Ms	52822
PSTAIR [PSTAIR]	M	ELISA, IP, WB	Ms	10345
PTP2	P	WB	Ms	22088
Rad14	P	WB	Ms	22092
RAD16	P	WB	Ms	21758
Rad17 [1C6/2]	M	WB	Ms	18692
Rad51	P	ICC/IF, IP, WB	Rb	63798
Rad7	P	WB	Ms	22091
Ran	P	IF, WB	Rb	11693
RFC4 [1320]	M	WB	Ms	2628
Ribophorin I	P	WB	Ms	52672
RNA polymerase II CTD repeat YSPTSPS (phospho S2) - ChIP Grade	P	ChIP, ICC/IF, IHC-P, WB	Rb	5095
RNA polymerase II CTD repeat YSPTSPS (phospho S5) - ChIP Grade	P	ChIP, CHIPseq, ICC/IF, IHC-Fr, IHC-P, WB	Rb	5131
RNA polymerase II CTD repeat YSPTSPS [4H8] - ChIP Grade	M	ChIP, ELISA, ICC/IF, IP, WB	Ms	5408
RNA polymerase II RPB11 [4Y11]	M	GSA, WB	Ms	12090
RPA32/RPA2	P	ELISA	Rb	34736
Rpn13	P	WB	Ms	21749
Rpn2	P	WB	Ms	21638
Rpn4	P	WB	Ms	21746
Rpn5	P	WB	Ms	43729
Rpn6	P	WB	Ms	21747
Rpn8	P	WB	Ms	43730
Rpn9	P	WB	Ms	21742
Rpt1	P	WB	Ms	21743
RPT2	P	WB	Rb	22679
Rpt3	P	WB	Rb	22677
Rpt4	P	WB	Ms	43731
Rpt5	P	WB	Ms	21745
Rpt5	P	WB	Rb	22676



Nuclear Pore Complex Proteins antibody (ab24609)

(Used in immunofluorescence of human RPE-1 cells; nuclei shown in blue) 6 publications reference this antibody.

We have many more antibodies to Histone modifications, a large number of which are conserved in *Saccharomyces cerevisiae* and *Schizosaccharomyces pombe*.

Please visit the website to view the complete list.