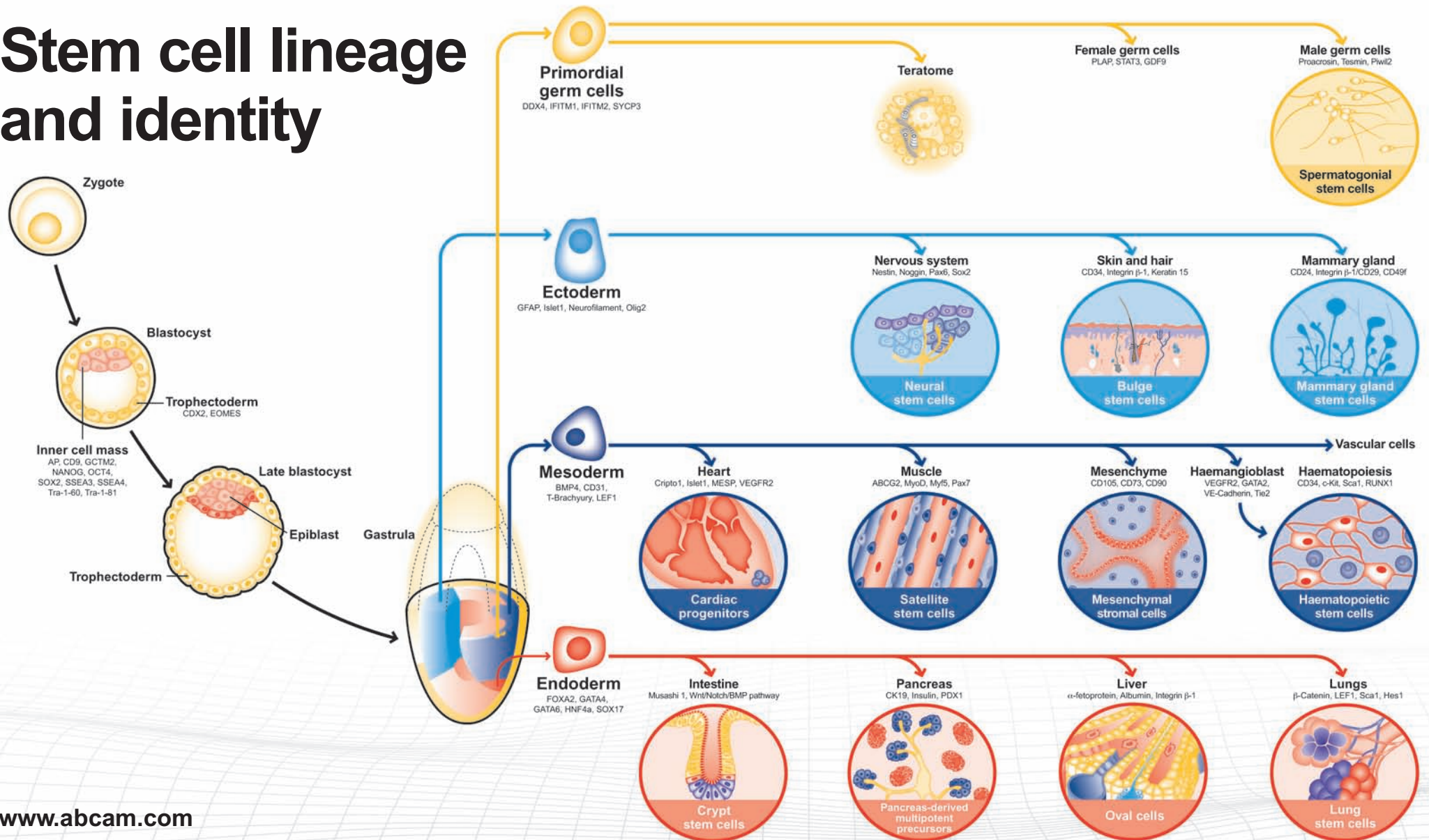
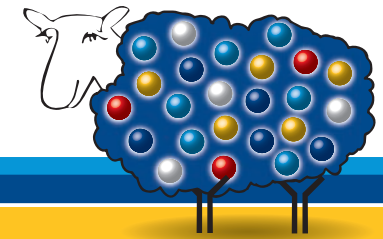


Stem cell lineage and identity



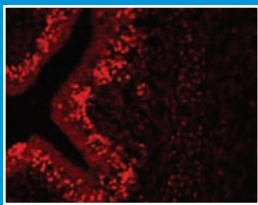


Stem cell lineage antibodies from Abcam:

See more products at: www.abcam.com

Product	Clonality	Applications	Host	Cross-reactivity	Datasheet www.abcam.com/ab...
Primordial germ cell markers					
DDX4	P	ICC/IF, IHC-FoFr, IHC-Fr, IHC-P, WB	Rb	Hu, Ms, Rt, Cow, Pig	13840
IFITM1	P	WB	Rb	Hu	70477
IFITM2	P	WB	Ms	Hu	68506
SYCP3	P	ICC/IF, IHC-P	Rb	Ms,Dog	15092
Germ Cell Markers					
GDF9	P	ELISA, IHC-P, WB	Rb	Hu	38544
MSY2/YBOX2	P	ELISA, IHC-P, WB	Rb	Ms	28643
Piwil2	P	WB	Rb	Ms	36764
PLAP	M	ELISA, Flow Cyt, IHC-Fr	Ms	Hu	11299
STAT3 (phospho Y705)	P	ELISA, IHC-Fr, IHC-P, IHC-P, IP, WB	Rb	Hu,Ms,Rt	30646
Stra8	P	IHC-P, WB	Rb	Ms, Rt	49602
MLT5	M	WB	Ms	Hu	56629
Ectoderm markers					
68kDa Neurofilament [EP675Y]					
C-terminal end	M	Flow Cyt, IP, WB	Rb	Hu, Ms, Rt	52989
CD49f/Integrin α 6	M	Flow Cyt, ICC/IF, IHC-Fr, IHC-P	Rb	Hu,Ms	19765
CD24	M	Flow Cyt, Funcs, IHC-Fr, IHC-P, WB	Rt	Ms	64064
Integrin β -1	M	Flow Cyt, ICC/IF, IHC-Fr, IHC-P, IHC-P, WB	Rb	Hu, Ms, Rt	52971
CD34	M	Flow Cyt, ICC/IF, IHC-FoFr, IHC-Fr, IHC-P, IP, WB	Rt	Ms	8158
Cripto1	P	ICC/IF, IHC-P, WB	Rb	Hu, Ms	19917
GFAP	P	ICC/IF, IHC-FoFr, IHC-Fr, IHC-P, WB	Rb	Hu, Ms, Rat, Mamm, Cat, Cow, Pig	7260
Islet 1	P	ICC/IF, IF, IHC-Fr	Rb	Hu, Ms, Rt	20670
Keratin 15	M	Flow Cyt, ICC/IF, IHC-P, WB	Rb	Hu	52816
Nestin	P	ICC/IF, IHC-FoFr, IHC-Fr, IHC-P	Rb	Hu, Ms, Rt, Cow, Hm, Mcq	5968
NeuN [A60] (Biotin)	M	ICC, IHC-P, WB	Ms	Hu, Ms, Rt	77315
Noggin	P	Flow Cyt, IP, WB	Rb	Hu	76116
Olig2	P	ICC/IF, IHC-FoFr, IHC-Fr, IHC-P, IHC (PFA fixed), WB	Rb	Ms, Rt	33427
Otx2	P	ChIP, ICC/IF, IHC-Fr, IHC-P, WB	Rb	Hu, Ms, Cow, Xi	21990
Pax4	P	IHC-P, WB, ELISA	Rb	Hu	42450
PAX6	P	ICC/IF, IHC-Fr, WB	Rb	Ms, Rt, Shp	5790
PDHX	M	IHC-P, WB, IHC-Fr	Ms	Hu	49642
Smad2	M	Flow Cyt, ICC, WB, IHC-P	Rb	Hu, Ms	33875
Sox 2	P	ICC/IF, IHC-Fr, WB	Rb	Hu,Ms	59776
Sox17	P	WB, ELISA	Rb	Hu,	33101
Vimentin	P	ICC/IF, IHC-Fr, IHC-P, WB	Chk	Hu, Ms	39376
Wnt3	M	WB, ELISA	Ms	Hu	52568
Endoderm markers					
α -fetoprotein	M	IHC-P, WB, IP	Rb	Hu	45147
Albumin	P	Ie, IHC-FoFr, IHC-P, DID, RID, IHC-Fr	Shp	Hu, Ms, rat,Cat, Chk, Cow, Dog, Goat, Gpig, Hrs, Pig, Rb.	8940

Product	Clonality	Applications	Host	Cross-reactivity	Datasheet www.abcam.com/ab...
Endoderm markers (continued)					
β -catenin	P	IHC-P, WB, ICC/IF, Dot, IHC-Fr	Rb	Hu, Ms, Rat, Chk, Pig, Xi, Zfish	6302
CK19	M	Flow Cyt, IHC-P, WB, ICC/IF, Dot, IHC-Fr	Ms	Hu	9221
Claudin 6 antibody	P	ELISA, ICC/IF, IHC-P, WB	Rb	Hu	75055
FOXA2	P	ICC/IF, IHC-FoFr, IHC-P, WB	Rb	Hu, Ms, Rt	40874
GATA4	P	ELISA, ICC/IF, WB	Rb	Hu, Rat	61767
GATA6	P	WB	Rb	Hu, Ms, Rat	22600
Glucagon	P	IHC-Fr, IHC-P	Rb	Hu, Ms, Rt	8055
Glucagon [K79bB10]	M	Dot, ICC/IF, IHC-P, RIA, WB	Ms	Hu, Ms, Rt, Cat, Dog, Gpig, Pig, Rb	10988
Hes1	P	IHC-P, WB	Rb	Hu, Ms, Rat	71559
Human Serum Albumin	P	DID, Ie, IHC-FoFr, IHC-Fr, IHC-P, RID	Shp	Hu, Ms, Rt, Cat, Chk, Cow, Dog, Goat, Gpig, Hrs, Pig, Rb	8940
LEF1	M	Flow Cyt, WB, ICC/IF, IHC-P	Rb	Hu	53293
Musashi1	M	IP, Flow Cyt, ICC, IHC-P, WB, IHC-Fr	Rb	Hu, Ms, Rat, Chk, Ql	52865
Nkx2.5 antibody	M	WB	Ms	Hu	54567
Sca1 / Ly6A/E antibody [D7] (FITC)	M	CellAct, Flow Cyt, IHC-Fr, IP, WB	Rat	Ms	25031
Sox17	P	WB, ELISA	Rb	Hu,	33101
Wnt3	M	WB, ELISA	Ms	Hu	52568
Mesoderm Markers					
ABCG2	M	ICC, IHC-Fr, IHC-P, WB	Ms	Hu	3380
BMP4	P	IHC-P, WB	Rb	Hu, Ms, Rt	39973
T-Brachyury	P	ICC/IF, IHC-Fr, IHC-P, WB	Rb	Hu, Ms	20680
CD31	M	ICC/IF, IP, WB	Ms	Hu, Ms, Rat	24590
CD34	P	IHC-P	Rb	Hu	64480
CD34 [MEC 14.7]	M	Flow Cyt, ICC/IF, IF, IHC-FoFr, IHC-Fr, IHC-P, IP, WB	Rt	Ms	8158
c-Kit	P	ELISA, ICC/IF, IHC-P, WB	Rb	Hu, Ms	5506
Desmin	M	IHC-P, WB, ICC/IF, IHC-Fr, IHC-FoFr	Ms	Hu, Ms, Rt	6322
Fibronectin	P	ICC/IF, IHC-Fr, IHC-P, IP, WB	Rb	Hu, Ms, Hm	2413
Fibronectin [JST-9]	M	AP, ICC, ICC/IF, IHC-Fr, IHC-P, RIA, WB	Ms	Hu, Ms, Chk, Cow, Dog, Pig	6328
GATA2	P	ChIP, IHC-P, WB	Rb	Hu	22849
Islet 1	P	ICC/IF, IF, IHC-Fr	Rb	Hu, Ms, Rt	20670
LEF1 [EP2030Y]	M	Flow Cyt, ICC/IF, IHC-P, WB	Rb	Hu	53293
MESP1	M	ELISA, WB	Ms	Hu	77013
NKX2.1	M	Flow Cyt, ICC, IHC-P, WB	Rb	Hu, Ms, Rt	76013
Nodal	P	WB, ICC/IF	Rb	Hu,Ms	39953
NPPA	P	IHC-P, WB, IHC-Fr	Rb	Hu, Ms, Rt	76743
RUNX1	P	ELISA, IHC-P, WB	Rb	Hu, Ms	61753
Sca1 / Ly6A/E [D7] (FITC)	M	CellAct, Flow Cyt, IHC-Fr, IP, WB	Rt	Ms	25031
TIE1 [Cl. 8C9]	M	ELISA, Flow Cyt, WB	Ms	Hu	27851
Tie2	M	ELISA, Flow Cyt, WB	Ms	Hu	24859
VE Cadherin	P	Neut, Flow Cyt, IP, WB, P, ICC/IF, IHC-Fr	Rb	Hu	7047
VEGFR1	M	IHC-P, IP, WB, ICC/IF, IHC-Fr	Rb	Hu, Ms	32152

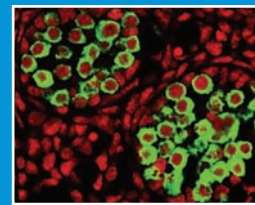


Olig2 antibody (ab33427)

Clonality	Applications	Host	Species cross reactivity
P	ICC/IF, IHC-FoFr, IHC-Fr, IHC-P, IHC (PFA fixed), WB	Rb	Ms, Rt

Olig2 (oligodendrocyte transcription factor 2) is required for oligodendrocyte and motor neuron specification in the spinal cord, as well as for the development of somatic motor neurons in the hindbrain.

5 ★★★★★ star customer review: Excellent



DDX4/MVH antibody (ab13840)

Clonality	Applications	Host	Species cross reactivity
P	ICC/IF, IHC-FoFr, IHC-Fr, IHC-P, WB	Rb	Hu, Ms, Rt, Cow, Pig

DEAD-box protein 4 (DDX4) is a germline marker expressed only in the ovary and testis. DDX4 is expressed in spermatogenic cells from the spermatocyte stage to the round spermatid stage and in migratory primordial germ cells in the region of the gonadal ridge in both sexes.

5 ★★★★★ star customer review: Excellent