



**ab109879**

**MetaPath™ Mito Disease  
4-Plex Dipstick Array**

Instructions for Use

For the measurement of mitochondrial biogenesis regulation in human samples.

This product is for research use only and is not intended for diagnostic use.

**[www.abcam.com](http://www.abcam.com)**

## Table of Contents

---

1. Introduction	2
2. Assay Summary	5
3. Kit Contents	6
4. Storage and Handling	6
5. Additional Materials Required	7
6. Preparation of Samples	7
7. Dipstick Procedure	9
8. Data Analysis	11
9. Specificity	15
10. Troubleshooting	15

## 1. Introduction

---

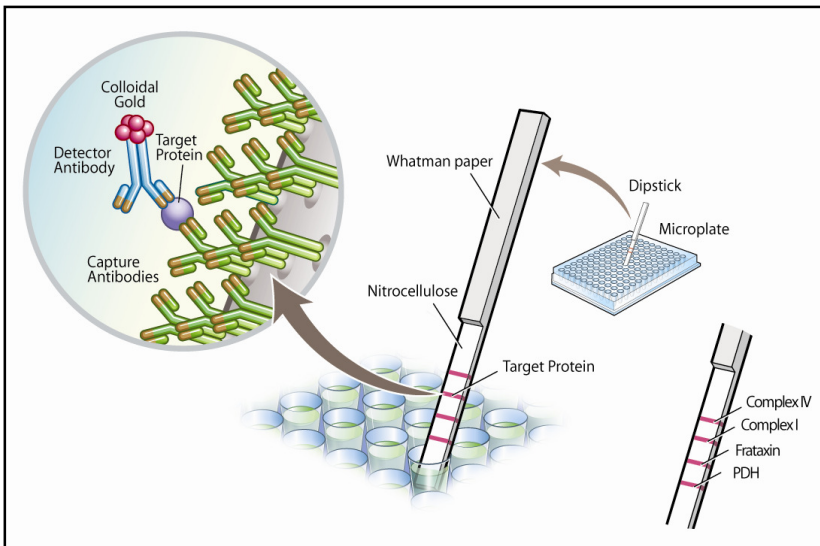
ab109879 is a rapid and simple test for determining four mitochondrial protein parameters: OXPHOS Complex I, OXPHOS Complex IV, pyruvate dehydrogenase, and frataxin. The kit determines whether mitochondrial biogenesis has been up-regulated or down-regulated in human samples as a result of drug interactions or conditions such as oxidative stress and mitochondrial genetic disease.

Each of the dipsticks in the kit contains an anti-Complex I antibody (mAb) and an anti-Complex IV mAb for monitoring specific defects in either complex, defects in mtDNA or dysfunctional protein synthesis by mitochondrial ribosomes. Each dipstick also contains an anti-PDH mAb and an anti-frataxin mAb these proteins can be used as mitochondrial reference proteins to compare against Complexes I and IV, PDH and frataxin are also affected in the specific mitochondrial diseases pyruvate dehydrogenase complex disease (PDCD) and Friedreich's ataxia (FA), respectively.

The assay works on very small amounts of sample material, including cheek swabs or single drops of blood, and results can be generated in under 30 minutes. The assay also works on cultured cells and is suitable for any situation in which speed and simplicity are required. The method is based on an immunological sandwich

## ab109879 MetaPath™ Mito Disease 4-Plex Dipstick Array

assay (see Figure 1). Each enzyme is bound by two unique monoclonal antibodies. To accomplish this, one antibody is gold labeled and mixed with the sample. The other is embedded in the strip in one of four vertically separated zones. As the sample wicks past each zone the corresponding enzyme (now gold labeled) is trapped, this results a red colored band which is directly proportional in intensity to the amount of each enzyme captured.



**Figure 1.** ab109879 is a lateral flow/dipstick device measuring mitochondrial complexes I, IV, PDH and frataxin by sandwich ELISA.

Standard curves of Complex I, IV, PDH and frataxin levels are generated by the user with a control dilution series of normal sample material. The signal intensities of the four bands on the dipsticks are measured by a dipstick reader or may be analyzed by another

ab109879 MetaPath™ Mito Disease 4-Plex Dipstick Array

imaging system. The levels of all 4 enzymes in an experimental sample are then measured by interpolating their signal intensities into the standard curves. The levels and ratios of the enzymes in experimental samples are then compared with the control dilution series.

## 2. Assay Summary

---

Prepare samples.



Prepare Standard Curve.



Add 25  $\mu$ l of 2X Buffer B to a well with dried, gold-conjugated mAb.



After 5 minutes, add 25  $\mu$ l of sample in Buffer A to the above well.



Mix contents to re-suspend antibody.



Add dipstick to microplate well and let sample wick up onto dipstick.



Add 50  $\mu$ l of Buffer C to well and wick completely.



Dry dipstick.



Measure signal.

### 3. Kit Contents

Sufficient materials for 90 or 30 measurements.

Item	Quantity	
Dipsticks	90	30
Gold-conjugated antibody (dried in microplate wells)	90 wells	30 wells
Buffer A* (Extraction buffer)	45 ml	15 ml
Buffer B* (10X Blocking buffer)	1.2 ml	0.4 ml
Buffer C* (Wash buffer)	6x (1 ml)	2x (1 ml)

### 4. Storage and Handling

All components are stable in their provided containers at room temperature out of direct sunlight. After diluting the 10X Blocking Buffer to 2X, store at 4°C. For long-term storage, all buffers can be stored at 4°C.

## 5. Additional Materials Required

---

- Dipstick reader or other imaging system
- Method for determining protein concentration
- Pipetting devices
- Protease inhibitors

## 6. Preparation of Samples

---

**Note:** *Samples must be kept on ice. Proteases inhibitors are not provided. Enough Buffer A is provided (Extraction Buffer) for preparation of 20 samples using 500 µl /sample.*

### A. Tissue Sample Preparation

1. Start with approximately 25 mg of tissue sample. Add 10 volumes of Buffer A per microgram of sample (e.g. if the sample weighs 50 mg, add 500 µl of Buffer A).
2. Homogenize the sample.
3. Keep on ice for 20 minutes, mixing intermittently.

4. Spin the cell extract in a microcentrifuge at 13,000-16,000 rpm at 4°C for 20 minutes to pellet cellular debris.
5. Transfer supernatant to a new tube and determine protein concentration (e.g. BCA assays are recommended as the detergent in Buffer A does not affect the reading in the assay).
6. Proceed directly to Dipstick Procedure or freeze samples at -80°C.

## **B. Cell Culture Sample Preparation**

1. Start with a cell pellet. Add 5-10 volumes of Buffer A to the cell pellet and mix (e.g. if the total sample volume displaces 50 µl of volume, then add 250-500 µl of Buffer A).
2. Keep on ice for 20 minutes, mixing intermittently.

3. Spin the cell extract in a microcentrifuge at 13,000 to 16,000 rpm for 20 minutes at 4°C to pellet cellular debris.
4. Transfer supernatant to a new tube and determine protein concentration (e.g. BCA assays are recommended as the detergent in Buffer A does not affect the reading in the assay).
5. Proceed directly to Dipstick Procedure or freeze samples at -80°C.

## 7. Dipstick Procedure

---

The assay is most accurate with a user established standard curve for interpolation of the signal intensity. Following the protein concentration ranges as defined in Table 1, generate a standard curve using a positive control sample. We recommend performing a 1:2 serial dilution with 1 part Buffer A to 1 part Buffer B in a total volume of 50 µl.

<b>Sample Type</b>	<b>Suggested Working Range (µg)</b>
Fibroblasts	0.1 – 10
HeLa cells	0.1 – 10
HepG2 cells	0.05 – 5
Muscle extract (Human)	0.1 – 1.5

**Table 1.** *Suggested working range for different sample types*

For Individual Dipstick Reactions:

1. Make 2X Buffer B by adding 1.6 mL H<sub>2</sub>O to 0.4 mL 10X Buffer B.
2. Add 25 µL of 2X Buffer B to each well of gold conjugated mAb as necessary.
3. Allow gold conjugated mAb to re-hydrate for 5-10 minutes.
4. Now, add 25 µL of sample in Buffer A for at total volume of 50 µL and mix to homogeneity.

5. Gently add a dipstick to the well with the thin end down (see Figure 1). The contents will immediately begin wicking up the dipstick.
6. Wick the entire contents before proceeding to the wash step (the positive control band typically appears within 1-2 minutes. A 50 µl sample should wick completely in 12-20 minutes. More viscous extracts may take longer.
7. Add 50 µl of Buffer C and wick completely.
8. Dry the dipstick(s) before analysis (~20 minutes to air dry, or ~10 minutes at 37°C).
9. Measure the signal intensity with a dipstick reader or other imaging system, e.g. flat-bed scanner.

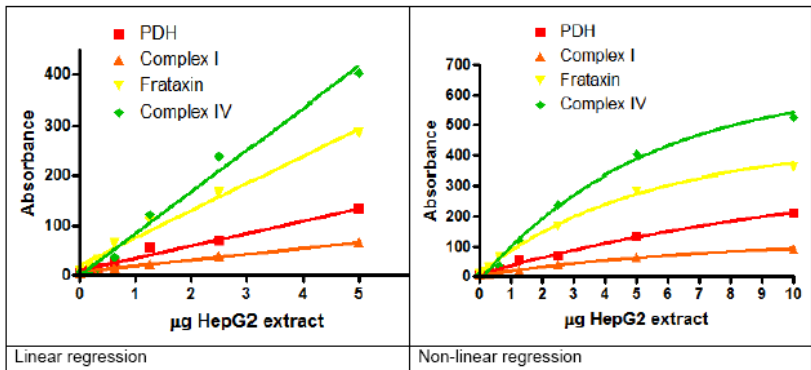
## 8. Data Analysis

---

The experiment shown below shows a standard curve for each analyte generated from a dilution series of normal HepG2 cells. HepG2 whole cell extracts were prepared as described in this protocol. All data were analyzed using and GraphPad software. Intra-assay and inter-assay CVs are typically ≤10%.

### A. Generating a standard curve

Below we show a typical standard curve for the ab109879 Dipstick using HepG2 cell extract (see Table 1). We suggest using 7 to 8 dipsticks for covering the working range. In this example, the maximum sample load should be 5 µg linear regression above which non-linear regression should be used.



Reproducibility: Intra-assay variation <10%, Inter-assay <15%.

ab109879 MetaPath™ Mito Disease 4-Plex Dipstick Array

Example: A HepG2 sample was analyzed using ab109879 and bands quantified in absorbance units by Dipstick Reader.

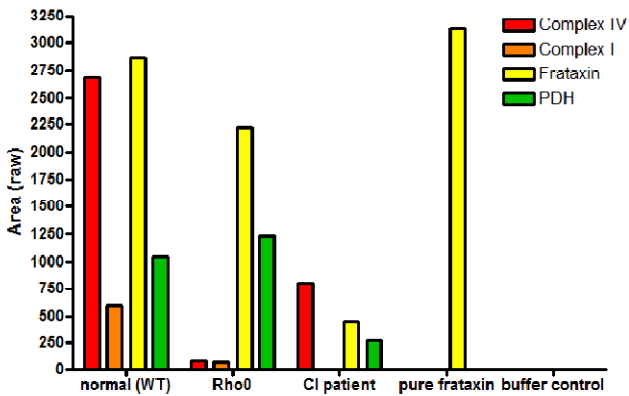
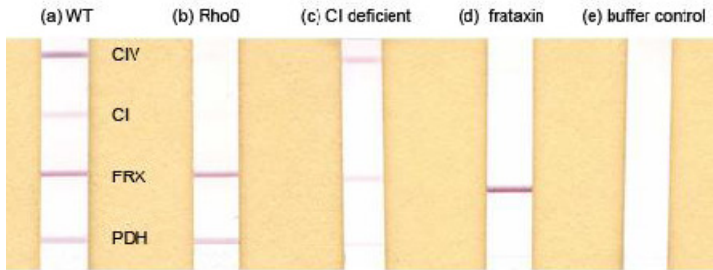
	Average	n	c.v. (%)
PDH	77	3	5.4
Complex I	32	3	4.1
Frataxin	175	3	4.8
Complex IV	216	3	5.6

**B. Measurement using desktop scanner: Analysis of samples with mitochondrial deficiencies show signal specificity.**

Shown below are examples of dipsticks from (a) normal fibroblast cells (b) rho0 fibroblast cells which lack mtDNA and hence complexes I and IV only (c) a fibroblast sample from a patient exhibiting a specific deficiency in complex I (d) pure frataxin and (e) buffer control with containing no

ab109879 MetaPath™ Mito Disease 4-Plex Dipstick Array

sample. Data from these sticks was collected using a simple flatbed scanner and ImageJ software.



## 9. Specificity

---

Species Reactivity: Human

## 10. Troubleshooting

---

### Signal is saturated

It is very important that the amount of sample used is within the working range of the assay (a best fit line for interpolation as generated with the GraphPad program). Therefore, it is crucial to know the working range for the sample type and avoid the region of signal saturation (see Table 1). Determination of the working range is recommended for the sample in case of signal saturation.

### Signal is too weak

This occurs when the sample lacks measurable amounts of the protein. To increase signal add more sample to another dipstick.

ab109879 MetaPath™ Mito Disease 4-Plex Dipstick Array

ab109879 MetaPath™ Mito Disease 4-Plex Dipstick Array

ab109879 MetaPath™ Mito Disease 4-Plex Dipstick Array

### **Abcam in the USA**

Abcam Inc  
1 Kendall Square, Ste B2304  
Cambridge,  
MA 02139-1517  
USA

Toll free: 888-77-ABCAM (22226)  
Fax: 866-739-9884

### **Abcam in Europe**

Abcam plc  
330 Cambridge Science Park  
Cambridge  
CB4 0FL  
UK

Tel: +44 (0)1223 696000  
Fax: +44 (0)1223 771600

### **Abcam in Japan**

Abcam KK  
1-16-8 Nihonbashi  
Kakigaracho,  
Chuo-ku, Tokyo  
103-0014  
Japan

Tel: +81-(0)3-6231-094  
Fax: +81-(0)3-6231-0941

### **Abcam in Hong Kong**

Abcam (Hong Kong) Ltd  
Unit 225A & 225B, 2/F  
Core Building 2  
1 Science Park West Avenue  
Hong Kong Science Park  
Hong Kong

Tel: (852) 2603-682  
Fax: (852) 3016-1888