

Product datasheet

Anti-slrl821 antibody ab65551

1 Image

Overview

<b>Product name</b>	Anti-slrl821 antibody
<b>Description</b>	Rabbit polyclonal to slrl821
<b>Tested applications</b>	<b>Suitable for:</b> WB
<b>Species reactivity</b>	Reacts with Synechocystis sp. PCC 6803.
<b>Immunogen</b>	Synthetic peptide: VETKR ASNPLEALTY , corresponding to amino acids 216-230 of slrl821 from Synechocystis sp. PCC 6803. <a href="#">Run BLAST with</a> <a href="#">Run BLAST with</a>
<b>Positive control</b>	Synechocystis sp. PCC 6803 membrane proteins.

Properties

<b>Form</b>	Liquid
<b>Storage instructions</b>	Shipped at 4°C. Upon delivery aliquot and store at -20°C. Avoid freeze / thaw cycles.
<b>Storage buffer</b>	Preservative: 0.01% Sodium Azide Constituents: Whole serum
<b>Purity</b>	Whole antiserum
<b>Clonality</b>	Polyclonal
<b>Isotype</b>	IgG

Applications

Our [Abpromise guarantee](#) covers the use of **ab65551** in the following tested applications.

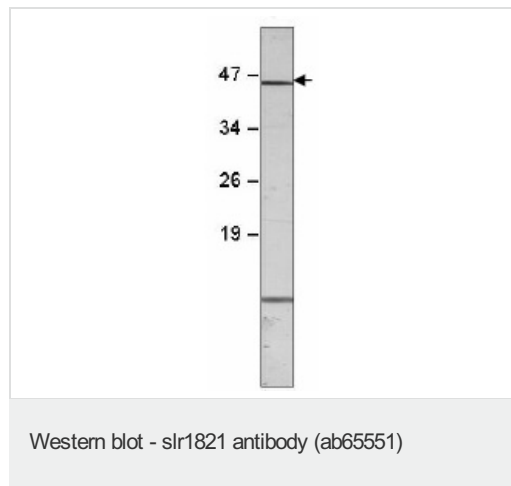
The application notes include recommended starting dilutions; optimal dilutions/concentrations should be determined by the end user.

Application	Abreviews	Notes
WB		1/2000. Detects a band of approximately 45 kDa (predicted molecular weight: 39 kDa).

Target

<b>Relevance</b>	slr1821 is a transmembrane metallo protease of <i>Synechocystis</i> sp. PCC 6803 that belongs to SP2-type metallopeptidases, the key player of intramembrane proteolysis.
<b>Cellular localization</b>	Cell inner membrane; Multipass membrane protein

## Images



Anti-slr1821 antibody (ab65551) at 1/2000 dilution + *Synechocystis* sp. PCC 6803 membrane proteins at 3 µg

### Secondary

anti-rabbit at 1/30000 dilution  
Developed using the ECL technique

**Predicted band size** : 39 kDa

**Observed band size** : 45 kDa

**Please note:** All products are "FOR RESEARCH USE ONLY AND ARE NOT INTENDED FOR DIAGNOSTIC OR THERAPEUTIC USE"

## Our Abpromise to you: Quality guaranteed and expert technical support

- Replacement or refund for products not performing as stated on the datasheet
- Valid for 12 months from date of delivery
- Response to your inquiry within 24 hours
- We provide support in Chinese, English, French, German, Japanese and Spanish
- Extensive multi-media technical resources to help you
- We investigate all quality concerns to ensure our products perform to the highest standards

If the product does not perform as described on this datasheet, we will offer a refund or replacement. For full details of the Abpromise, please visit <http://www.abcam.com/abpromise> or contact our technical team.

## Terms and conditions

- Guarantee only valid for products bought direct from Abcam or one of our authorized distributors