


Product datasheet

Anti-14-3-3 beta antibody ab97273

4 References 6 Images

Overview

<b>Product name</b>	Anti-14-3-3 beta antibody
<b>Description</b>	Rabbit polyclonal to 14-3-3 beta
<b>Host species</b>	Rabbit
<b>Tested applications</b>	<b>Suitable for:</b> WB, ICC/IF, IHC-P
<b>Species reactivity</b>	<b>Reacts with:</b> Mouse, Rat, Human <b>Predicted to work with:</b> Pig 
<b>Immunogen</b>	Recombinant protein fragment corresponding to a region within amino acids 1 - 141 of 14-3-3 beta (AAH01359).
<b>Positive control</b>	WB: 293T, A431, H1299, HeLa, HepG2, MOLT4 and Raji cell lysates and mouse brain tissue lysate. ICC/IF: HeLa cells. IHC-P: SW480 xenograft and rat cervix tissues.
<b>General notes</b>	<p>The Life Science industry has been in the grips of a reproducibility crisis for a number of years. Abcam is leading the way in addressing this with our range of recombinant monoclonal antibodies and knockout edited cell lines for gold-standard validation. Please check that this product meets your needs before purchasing.</p> <p>If you have any questions, special requirements or concerns, please send us an inquiry and/or contact our Support team ahead of purchase. Recommended alternatives for this product can be found below, along with publications, customer reviews and Q&amp;As</p>

Properties

<b>Form</b>	Liquid
<b>Storage instructions</b>	Shipped at 4°C. Upon delivery aliquot and store at -20°C or -80°C. Avoid repeated freeze / thaw cycles.
<b>Storage buffer</b>	pH: 7.00 Preservative: 0.01% Thimerosal (merthiolate) Constituents: 1.21% Tris, 0.75% Glycine, 10% Glycerol (glycerin, glycerine)
<b>Purity</b>	Immunogen affinity purified
<b>Clonality</b>	Polyclonal
<b>Isotype</b>	IgG

## Applications

### The Abpromise guarantee

Our [Abpromise guarantee](#) covers the use of ab97273 in the following tested applications.

The application notes include recommended starting dilutions; optimal dilutions/concentrations should be determined by the end user.

Application	Abreviews	Notes
WB		1/5000 - 1/20000. Predicted molecular weight: 28 kDa.
ICC/IF		1/100 - 1/200.
IHC-P		1/100 - 1/1000.

## Target

### Function

Adapter protein implicated in the regulation of a large spectrum of both general and specialized signaling pathways. Binds to a large number of partners, usually by recognition of a phosphoserine or phosphothreonine motif. Binding generally results in the modulation of the activity of the binding partner. Negative regulator of osteogenesis.

### Sequence similarities

Belongs to the 14-3-3 family.

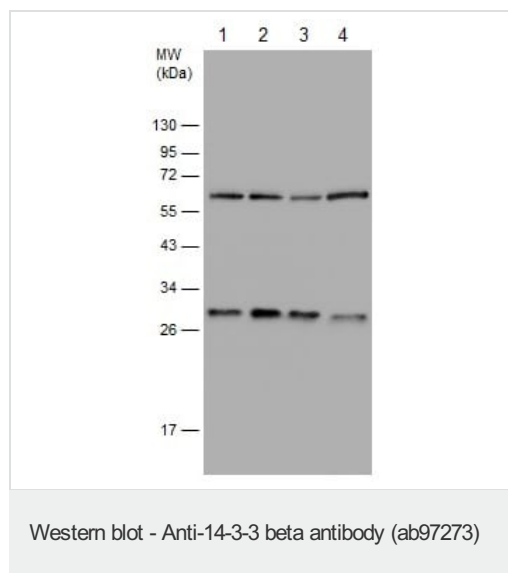
### Post-translational modifications

The alpha, brain-specific form differs from the beta form in being phosphorylated. Isoform Short contains a N-acetylmethionine at position 1.

### Cellular localization

Cytoplasm. Melanosome. Identified by mass spectrometry in melanosome fractions from stage I to stage IV.

## Images



**All lanes :** Anti-14-3-3 beta antibody (ab97273) at 1/10000 dilution

**Lane 1 :** 293T whole cell lysate

**Lane 2 :** A431 whole cell lysate

**Lane 3 :** HeLa whole cell lysate

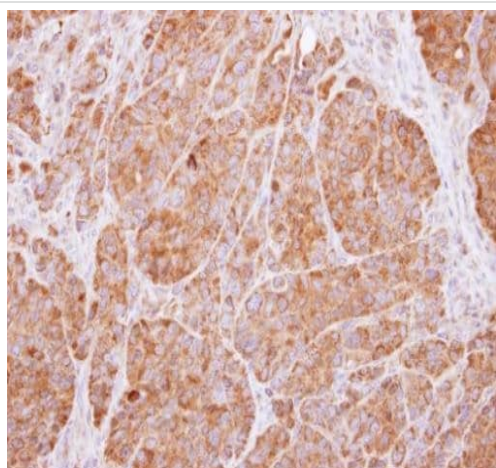
**Lane 4 :** HepG2 whole cell lysate

Lysates/proteins at 30 µg per lane.

### Secondary

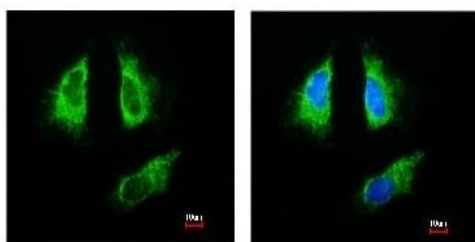
**All lanes :** HRP-conjugated anti-rabbit IgG

**Predicted band size:** 28 kDa



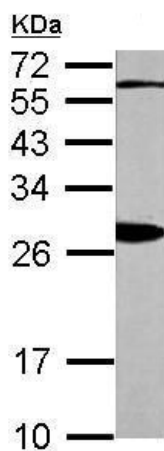
Immunohistochemistry (Formalin/PFA-fixed paraffin-embedded sections) analysis of SW480 xenograft labelling 14-3-3 beta with ab97273 at a dilution of 1/500.

Immunohistochemistry (Formalin/PFA-fixed paraffin-embedded sections) - Anti-14-3-3 beta antibody (ab97273)



ab97273, at a 1/200 dilution, staining 14-3-3 beta in paraformaldehyde fixed HeLa by Immunofluorescence analysis. Right image is merged with DNA probe.

Immunocytochemistry/ Immunofluorescence - Anti-14-3-3 beta antibody (ab97273)

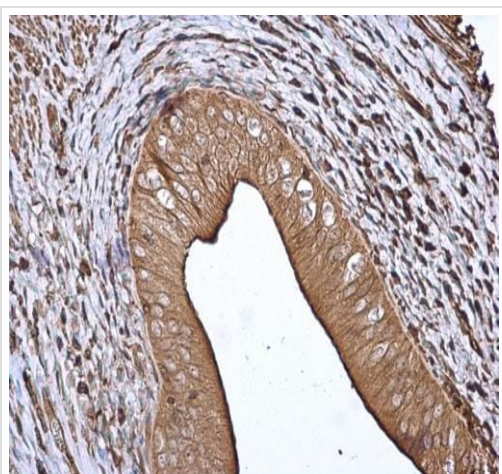


Anti-14-3-3 beta antibody (ab97273) at 1/10000 dilution + Mouse brain tissue lysate at 20  $\mu$ g

**Predicted band size:** 28 kDa

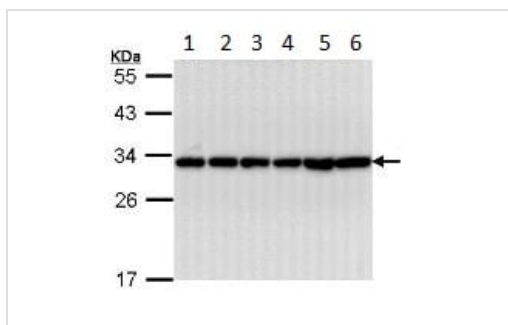
12% SDS PAGE.

Western blot - Anti-14-3-3 beta antibody (ab97273)



Immunohistochemistry (Formalin/PFA-fixed paraffin-embedded sections) - Anti-14-3-3 beta antibody (ab97273)

Immunohistochemistry (Formalin/PFA-fixed paraffin-embedded sections) analysis of rat cervix labelling 14-3-3 beta with ab97273 at a dilution of 1/500.



Western blot - Anti-14-3-3 beta antibody (ab97273)

**All lanes :** Anti-14-3-3 beta antibody (ab97273) at 1/10000 dilution

**Lane 1 :** A431 whole cell lysate

**Lane 2 :** H1299 whole cell lysate

**Lane 3 :** HeLa whole cell lysate

**Lane 4 :** HepG2 whole cell lysate

**Lane 5 :** MOLT4 whole cell lysate

**Lane 6 :** Raji whole cell lysate

Lysates/proteins at 30 µg per lane.

**Predicted band size:** 28 kDa

12% SDS PAGE

**Please note:** All products are "FOR RESEARCH USE ONLY. NOT FOR USE IN DIAGNOSTIC PROCEDURES"

### Our Abpromise to you: Quality guaranteed and expert technical support

- Replacement or refund for products not performing as stated on the datasheet
- Valid for 12 months from date of delivery
- Response to your inquiry within 24 hours
- We provide support in Chinese, English, French, German, Japanese and Spanish
- Extensive multi-media technical resources to help you

- We investigate all quality concerns to ensure our products perform to the highest standards

If the product does not perform as described on this datasheet, we will offer a refund or replacement. For full details of the Abpromise, please visit <https://www.abcam.com/abpromise> or contact our technical team.

### **Terms and conditions**

---

- Guarantee only valid for products bought direct from Abcam or one of our authorized distributors