


Product datasheet

Anti-14-3-3 eta/YWHAH antibody ab230689

1 Image

Overview

Product name	Anti-14-3-3 eta/YWHAH antibody
Description	Mouse monoclonal to 14-3-3 eta/YWHAH
Host species	Mouse
Tested applications	Suitable for: IHC-P
Species reactivity	Reacts with: Human Predicted to work with: Mouse, Rat, Cow 
Immunogen	Recombinant full length protein corresponding to Human 14-3-3 eta/YWHAH aa 1-246. Sequence: MGDREQLLQRARLAEQAERYDDMASAMKAVTELNEPLS NEDRNLLSVAYK NVVGARRSSWRVISSIEQKTMADGNEKKLEKVKAYREKIE KELETVCNDV LSLLDKFLIKNCNDFQYESKVFYLMKMGDYRYLAEVASG EKKNSVVEAS EAAYKEAFEISKEQMTPHPIRLGLALNFSVFYIEIQNAPE QACLLAKQA FDDAIAELDTLNEDSYKDSTLIMQLLRDNLTLWTSDQQDE EAGEGN

Database link: [Q04917](#)

 [Run BLAST with](#)

 [Run BLAST with](#)

Positive control IHC-P: Human breast tissue.

General notes This product was previously labelled as 14-3-3 eta

Reproducibility is key to advancing scientific discovery and accelerating scientists' next breakthrough.

Abcam is leading the way with our range of recombinant antibodies, knockout-validated antibodies and knockout cell lines, all of which support improved reproducibility.

We are also planning to innovate the way in which we present recommended applications and species on our product datasheets, so that only applications & species that have been tested in our own labs, our suppliers or by selected trusted collaborators are covered by our Abpromise™ guarantee.

In preparation for this, we have started to update the applications & species that this product is Abpromise guaranteed for.

We are also updating the applications & species that this product has been “predicted to work with,” however this information is not covered by our Abpromise guarantee.

Applications & species from publications and Abreviews that have not been tested in our own labs or in those of our suppliers are not covered by the Abpromise guarantee.

Please check that this product meets your needs before purchasing. If you have any questions, special requirements or concerns, please send us an inquiry and/or contact our Support team ahead of purchase. Recommended alternatives for this product can be found below, as well as customer reviews and Q&As.

Properties

Form	Liquid
Storage instructions	Shipped at 4°C. Store at +4°C short term (1-2 weeks). Upon delivery aliquot. Store at -20°C long term. Avoid freeze / thaw cycle.
Storage buffer	Preservative: 0.03% Sodium azide Constituents: PBS, 50% Glycerol
Purity	Affinity purified
Purification notes	Purified from TCS.
Clonality	Monoclonal
Isotype	IgG1

Applications

Our [Abpromise guarantee](#) covers the use of **ab230689** in the following tested applications.

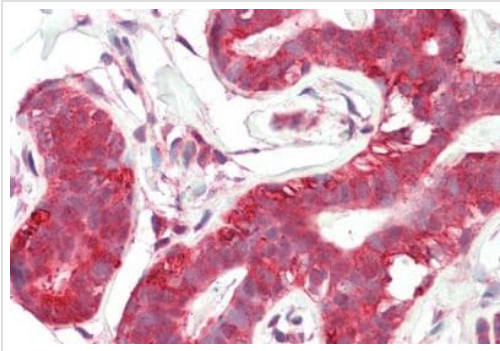
The application notes include recommended starting dilutions; optimal dilutions/concentrations should be determined by the end user.

Application	Abreviews	Notes
IHC-P		Use a concentration of 10 µg/ml. Perform heat mediated antigen retrieval before commencing with IHC staining protocol.

Target

Function	Adapter protein implicated in the regulation of a large spectrum of both general and specialized signaling pathways. Binds to a large number of partners, usually by recognition of a phosphoserine or phosphothreonine motif. Binding generally results in the modulation of the activity of the binding partner.
Tissue specificity	Expressed mainly in the brain and present in other tissues albeit at lower levels.
Sequence similarities	Belongs to the 14-3-3 family.

Images



Immunohistochemistry (Formalin/PFA-fixed paraffin-embedded sections) - Anti-14-3-3 eta/YWHAH antibody (ab230689)

Formalin-fixed, paraffin-embedded human breast tissue stained for 14-3-3 eta/YWHAH using ab230689 at 10 µg/ml in immunohistochemical analysis.

Please note: All products are "FOR RESEARCH USE ONLY. NOT FOR USE IN DIAGNOSTIC PROCEDURES"

Our Abpromise to you: Quality guaranteed and expert technical support

- Replacement or refund for products not performing as stated on the datasheet
- Valid for 12 months from date of delivery
- Response to your inquiry within 24 hours
- We provide support in Chinese, English, French, German, Japanese and Spanish
- Extensive multi-media technical resources to help you
- We investigate all quality concerns to ensure our products perform to the highest standards

If the product does not perform as described on this datasheet, we will offer a refund or replacement. For full details of the Abpromise, please visit <https://www.abcam.com/abpromise> or contact our technical team.

Terms and conditions

- Guarantee only valid for products bought direct from Abcam or one of our authorized distributors