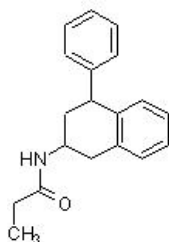


Product datasheet

4-P-PDOT, MT₂ selective melatonin receptor antagonist
ab146419

Overview

Product name	4-P-PDOT, MT ₂ selective melatonin receptor antagonist
Description	MT ₂ selective melatonin receptor antagonist
Biological description	MT ₂ selective melatonin receptor antagonist (K _i values are 0.46 and 56 nM for MT ₂ and MT ₁ respectively). Counteracts melatonin-mediated ERK- and Nrf2-related antioxidant potential <i>in vivo</i> . Centrally active.
Purity	> 99%
CAS Number	134865-74-0
Chemical structure	



Properties

Chemical name	N-(1,2,3,4-Tetrahydro-4-phenyl-2-naphthalenyl)propanamide
Molecular weight	279.38
Molecular formula	C ₁₉ H ₂₁ NO
PubChem identifier	3976006
Storage instructions	Store at room temperature.
Solubility overview	Soluble in ethanol to 100 mM and in DMSO to 100 mM
Handling	Need more advice on solubility, usage and handling? Please visit our frequently asked questions (FAQ) page for more details.
SMILES	CCC(=O)NC1CC(C2=CC=CC=C2C1)C3=CC=CC=C3
Source	Synthetic

Please note: All products are "FOR RESEARCH USE ONLY. NOT FOR USE IN DIAGNOSTIC PROCEDURES, NOT FOR USE IN HUMANS"

Our Abpromise to you: Quality guaranteed and expert technical support

- Replacement or refund for products not performing as stated on the datasheet
- Valid for 12 months from date of delivery
- Response to your inquiry within 24 hours

- We provide support in Chinese, English, French, German, Japanese and Spanish
- Extensive multi-media technical resources to help you
- We investigate all quality concerns to ensure our products perform to the highest standards

If the product does not perform as described on this datasheet, we will offer a refund or replacement. For full details of the Abpromise, please visit <https://www.abcam.com/abpromise> or contact our technical team.

Terms and conditions

- Guarantee only valid for products bought direct from Abcam or one of our authorized distributors
- Abcam biochemicals are novel compounds and we have not tested their biological activity in house. Please use the literature to identify how to use these products effectively. If you require further assistance please contact the scientific support team