



Product datasheet

Anti-5-oxo-ETE GPCR antibody ab235059

2 Images

Overview

<b>Product name</b>	Anti-5-oxo-ETE GPCR antibody
<b>Description</b>	Rabbit polyclonal to 5-oxo-ETE GPCR
<b>Host species</b>	Rabbit
<b>Tested applications</b>	<b>Suitable for:</b> IHC-P, WB
<b>Species reactivity</b>	<b>Reacts with:</b> Rat, Human
<b>Immunogen</b>	<p>Recombinant fragment corresponding to Human 5-oxo-ETE GPCR aa 1-97.            Sequence:</p> <p>MLCHRGGQLVPIIPLCPEHSCRGRRLQNLISGPWPKQ            PM            ELHNLSSPSPSLSSSVLPPSFSPSPSSAPSAFTTVGG            SSGGPCHPTSSSL VSAFLAP</p> <p>Database link: <a href="#">Q8TDS5</a></p> <p style="text-align: right;">  <a href="#">Run BLAST with</a>                 <a href="#">Run BLAST with</a> </p>
<b>Positive control</b>	WB: K562, HepG2 and HEK-293 cell lysate; Rat lung lysate. IHC-P: Human small intestine tissue.

Properties

<b>Form</b>	Liquid
<b>Storage instructions</b>	Shipped at 4°C. Store at +4°C short term (1-2 weeks). Upon delivery aliquot. Store at -20°C long term. Avoid freeze / thaw cycle.
<b>Storage buffer</b>	<p>pH: 7.4            Preservative: 0.03% Proclin            Constituents: PBS, 50% Glycerol</p>
<b>Purity</b>	Protein G purified
<b>Purification notes</b>	Purity >95%.
<b>Clonality</b>	Polyclonal
<b>Isotype</b>	IgG

Applications

Our [Abpromise guarantee](#) covers the use of **ab235059** in the following tested applications.

The application notes include recommended starting dilutions; optimal dilutions/concentrations should be determined by the end user.

Application	Abreviews	Notes
IHC-P		1/20 - 1/200.
WB		1/500 - 1/5000.

## Target

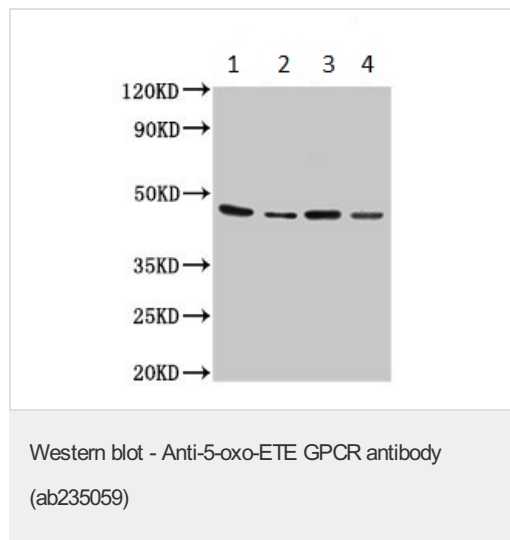
**Function** Receptor for eicosanoids and polyunsaturated fatty acids such as 5-oxo-6E,8Z,11Z,14Z-eicosatetraenoic acid (5-OXO-ETE), 5(S)-hydroperoxy-6E,8Z,11Z,14Z-eicosatetraenoic acid (5(S)-HPETE) and arachidonic acid. Seems to be coupled to the G(i)/G(o), families of heteromeric G proteins.

**Tissue specificity** Expressed in various tissues except brain. Expression is more intense in liver, kidney, peripheral leukocyte, lung, and spleen than in other tissues. Highly expressed in eosinophils, neutrophils, and lung macrophages.

**Sequence similarities** Belongs to the G-protein coupled receptor 1 family.

**Cellular localization** Cell membrane.

## Images



**All lanes** : Anti-5-oxo-ETE GPCR antibody (ab235059) at 1/500 dilution

**Lane 1** : K562 (Human chronic myelogenous leukemia cell line from bone marrow ) cell lysate

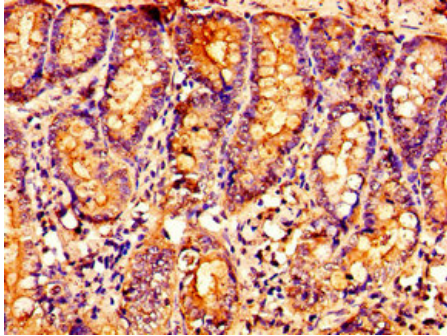
**Lane 2** : HepG2 (Human liver hepatocellular carcinoma cell line) cell lysate

**Lane 3** : HEK-293 (human epithelial cell line from embryonic kidney) cell lysate

**Lane 4** : Rat lung tissue lysate

### Secondary

**All lanes** : Goat polyclonal to rabbit IgG at 1/50000 dilution



Paraffin-embedded human small intestine tissue stained for 5-oxo-ETE GPCR using ab235059 at 1/100 dilution in immunohistochemical analysis.

Immunohistochemistry (Formalin/PFA-fixed paraffin-embedded sections) - Anti-5-oxo-ETE GPCR antibody (ab235059)

**Please note:** All products are "FOR RESEARCH USE ONLY. NOT FOR USE IN DIAGNOSTIC PROCEDURES"

### **Our Abpromise to you: Quality guaranteed and expert technical support**

---

- Replacement or refund for products not performing as stated on the datasheet
- Valid for 12 months from date of delivery
- Response to your inquiry within 24 hours
  
- We provide support in Chinese, English, French, German, Japanese and Spanish
- Extensive multi-media technical resources to help you
- We investigate all quality concerns to ensure our products perform to the highest standards

If the product does not perform as described on this datasheet, we will offer a refund or replacement. For full details of the Abpromise, please visit <https://www.abcam.com/abpromise> or contact our technical team.

### **Terms and conditions**

---

- Guarantee only valid for products bought direct from Abcam or one of our authorized distributors