


Product datasheet

Anti-5HT1F Receptor antibody ab28695

1 Image

Overview

Product name	Anti-5HT1F Receptor antibody
Description	Rabbit polyclonal to 5HT1F Receptor
Host species	Rabbit
Specificity	ab28695 recognises hydroxytryptamine 1F receptor (HTR1F).
Tested applications	Suitable for: WB, ELISA
Species reactivity	Reacts with: Human Predicted to work with: Mouse, Rat, Pig, Chimpanzee 
Immunogen	A region within a synthetic peptide: MDFLNSSDQN LTSEELLNRM PSKILVSLTL SGLALMTTII NSLVIAAIV, corresponding to N terminal amino acids 1-50 of Human 5HT1F Receptor Run BLAST with ExPASy Run BLAST with NCBI
Positive control	Fetal liver lysate

Properties

Form	Liquid
Storage instructions	Shipped at 4°C. Upon delivery aliquot and store at -20°C. Avoid freeze / thaw cycles.
Storage buffer	Preservative: 0.09% Sodium azide Constituents: 2% Sucrose, PBS
Purity	Protein A purified
Clonality	Polyclonal
Isotype	IgG

Applications

Our [Abpromise guarantee](#) covers the use of **ab28695** in the following tested applications.

The application notes include recommended starting dilutions; optimal dilutions/concentrations should be determined by the end user.

Application	Abreviews	Notes
-------------	-----------	-------

Application	Abreviews	Notes
WB		Use a concentration of 2.5 µg/ml. Detects a band of approximately 42 kDa (predicted molecular weight: 44 kDa). Good results were obtained when blocked with 5% non-fat dry milk in 0.05% PBS-T.
ELISA		1/62500.

Target

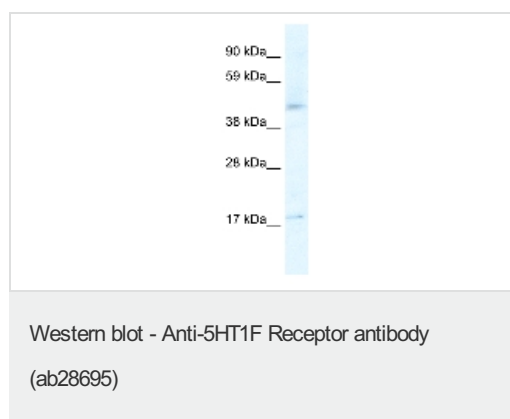
Relevance

5HT1F is one of the several different receptors for 5-hydroxytryptamine (serotonin), a biogenic hormone that functions as a neurotransmitter, a hormone, and a mitogen. The activity of this receptor is mediated by G proteins that inhibit adenylate cyclase activity. 5HT1F is a member of the GPCR family (subfamily: Serotonin). Expression of 5HT1F has been reported in various brain structures, including cortex, hippocampus, trigeminal ganglia, and cerebral blood vessels. Expression in peripheral tissues is limited to uterus, mesentery, and artery. No expression has been detected in heart, kidney, liver, pancreas, or spleen.

Cellular localization

Cell membrane; Multi pass membrane protein.

Images



Anti-5HT1F Receptor antibody (ab28695) at 2.5 µg/ml + Fetal liver lysate

Secondary

HRP conjugated anti-Rabbit IgG

Predicted band size: 44 kDa

Observed band size: 42 kDa

[why is the actual band size different from the predicted?](#)

Western Blot using ab28695 and a gel concentration of 12%

Please note: All products are "FOR RESEARCH USE ONLY. NOT FOR USE IN DIAGNOSTIC PROCEDURES"

Our Abpromise to you: Quality guaranteed and expert technical support

- Replacement or refund for products not performing as stated on the datasheet
- Valid for 12 months from date of delivery
- Response to your inquiry within 24 hours
- We provide support in Chinese, English, French, German, Japanese and Spanish
- Extensive multi-media technical resources to help you

- We investigate all quality concerns to ensure our products perform to the highest standards

If the product does not perform as described on this datasheet, we will offer a refund or replacement. For full details of the Abpromise, please visit <https://www.abcam.com/abpromise> or contact our technical team.

Terms and conditions

- Guarantee only valid for products bought direct from Abcam or one of our authorized distributors