

Product datasheet

Anti-6X His tag® antibody - ChIP Grade ab9108

★★★★☆ 25 Abreviews 73 References 4 Images

Overview

Product name	Anti-6X His tag® antibody - ChIP Grade
Description	Rabbit polyclonal to 6X His tag® - ChIP Grade
Host species	Rabbit
Specificity	ELISA: Antibody specificity was verified by ELISA against peptide conjugated to BSA (HHHHHH-BSA). A 1:25,000 dilution of the antibody gave an OD=1.0 in a 15 minute reaction using HRP-conjugated Goat anti-Rabbit IgG at 1:20,000 and TMB as the substrate. Appropriate specificity controls were run.
Tested applications	Suitable for: IP, WB, IHC-P, ICC/IF, ELISA, ChIP, Flow Cyt
Species reactivity	Reacts with: Species independent
Immunogen	Synthetic peptide: HHHHHH conjugated to KLH.
Positive control	<div style="border: 1px solid #ccc; padding: 5px; margin-bottom: 5px;"> Purchase matching WB positive control: ENO1 full length protein > </div> <p>ICC/IF: His tag expressed in HEK293 cells. WB: HeLa whole cell lysate transfected with His-tag. ChIP: HEK-293T cell line.</p>
General notes	<p>This antibody recognizes both C-terminal and N-terminal tags. HIS-TAG® is a trademark of EMD Biosciences, Inc.</p> <p>Abcam recommended secondaries - Goat Anti-Rabbit HRP (ab205718) and Goat Anti-Rabbit Alexa Fluor® 488 (ab150077).</p> <p>See other anti-rabbit secondary antibodies that can be used with this antibody.</p>

Properties

Form	Liquid
Storage instructions	Shipped at 4°C. Store at +4°C short term (1-2 weeks). Upon delivery aliquot. Store at -20°C or -80°C. Avoid freeze / thaw cycle.
Storage buffer	Preservative: 0.1% Sodium azide
Purity	Immunogen affinity purified
Clonality	Polyclonal
Isotype	IgG

Applications

Our [Abpromise guarantee](#) covers the use of **ab9108** in the following tested applications.

The application notes include recommended starting dilutions; optimal dilutions/concentrations should be determined by the end user.

Application	Abreviews	Notes
IP	★★★★★	Use at an assay dependent concentration.
WB	★★★★☆	1/1000.
IHC-P		Use at an assay dependent concentration. PubMed: 21483675
ICC/IF	★★★★★	1/100 - 1/500.
ELISA	★★★★★	1/1000.
ChIP		Use at an assay dependent concentration. ChIP was performed with 25 ug chromatin, 5ug of antibody and 20 ul of Protein A/G beads.
Flow Cyt	★★★★★	Use at an assay dependent concentration. (see Abreview published on 22nd January, 2007). ab171870 - Rabbit polyclonal IgG, is suitable for use as an isotype control with this antibody.

Target

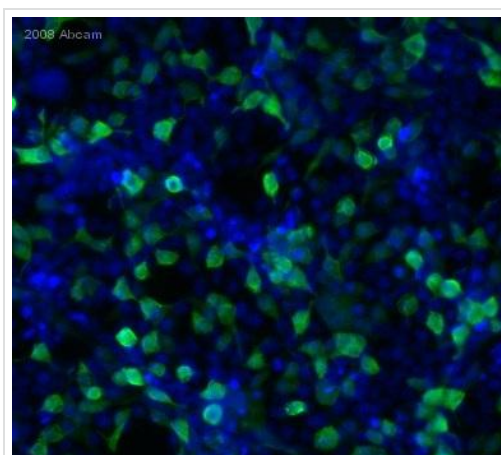
Relevance

The H-H-H-H-H-H motif is used as a tag on many recombinant proteins to facilitate purification. The antibody recognizes the His-tag fused to the amino- or carboxy- termini of targeted proteins in transfected or transformed cells.

Cellular localization

Depends upon the localization of the parent protein tagged with hexahistidine.

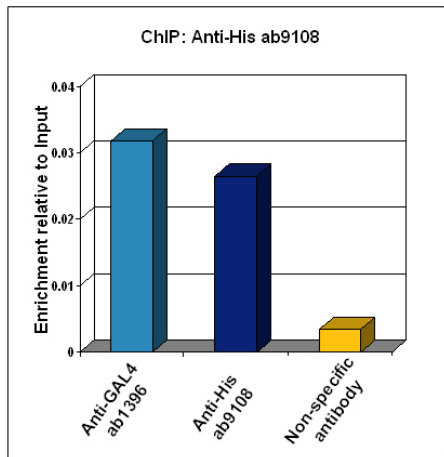
Images



ab9108 staining CACNB3 with His tag expressed in HEK293 cells by ICC/IF (Immunocytochemistry/immunofluorescence). Cells were fixed with paraformaldehyde, permeabilized with 0.5% Triton X-100 and blocked with 5% serum for 20 minutes at 25°C. Samples were incubated with primary antibody (1/500 in 1% goat serum, 0.1% TX100 and PBS) for 16 hours at 4°C. An Alexa Fluor® 488-conjugated Goat anti-rabbit IgG polyclonal was used as the secondary antibody (1/750).

Immunocytochemistry/ Immunofluorescence - Anti-6X His tag® antibody - ChIP Grade (ab9108)

This image is courtesy of Vladimir Milenkovic



ChIP - Anti-6X His tag® antibody - ChIP Grade (ab9108)

A stably transfected 293T human cell line harbouring the GAL4 upstream activation sequence was transiently transfected with a Myc or His - tagged GAL4 DNA Binding Domain construct. 48 hours post transfection Chromatin was prepared according to the Abcam X-ChIP protocol. The ChIP was performed with 25 ug chromatin, 5ug of antibody and 20 ul of Protein A/G beads. A non-specific antibody was used as the negative control. The immunoprecipitated DNA was quantified by real time PCR (SYBR Green approach).



Western blot - Anti-6X His tag® antibody - ChIP Grade (ab9108)

This image is courtesy of an anonymous Abreview

All lanes : Anti-6X His tag® antibody - ChIP Grade (ab9108) at 1/4000 dilution

Lane 1 : HeLa whole cell lysate - transfected with empty vector

Lane 2 : HeLa whole cell lysate - transfected with His-tagged gene

Lysates/proteins at 10 µg per lane.

Secondary

All lanes : HRP-conjugated goat anti-rabbit IgG polyclonal at 1/5000 dilution

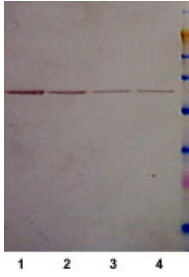
Developed using the ECL technique.

Performed under reducing conditions.

Observed band size: 35 kDa

[why is the actual band size different from the predicted?](#)

Exposure time: 30 seconds



Western blot - Anti-6XHis tag® antibody - ChIP Grade (ab9108)

Use of ab9108 in western blotting at 1:1000 against Epitope Tag Positive Control lysate (ab4524).

Lane 1: 2 µl lysate

Lane 2: 1 µl lysate

Lane 3: 0.5 µl lysate

Lane 4: 0.25 µl lysate Use of ab9108 in western blotting at 1:1000 against E.coli Positive Control (Escherichia coli) Whole Cell Lysate

- expressing 11 different epitope tag (ab5395). Lane 1: 2 µl lysate

Lane 2: 1 µl lysate Lane 3: 0.5 µl lysate Lane 4: 0.25 µl lysate

Please note: All products are "FOR RESEARCH USE ONLY AND ARE NOT INTENDED FOR DIAGNOSTIC OR THERAPEUTIC USE"

Our Abpromise to you: Quality guaranteed and expert technical support

- Replacement or refund for products not performing as stated on the datasheet
- Valid for 12 months from date of delivery
- Response to your inquiry within 24 hours
- We provide support in Chinese, English, French, German, Japanese and Spanish
- Extensive multi-media technical resources to help you
- We investigate all quality concerns to ensure our products perform to the highest standards

If the product does not perform as described on this datasheet, we will offer a refund or replacement. For full details of the Abpromise, please visit <https://www.abcam.com/abpromise> or contact our technical team.

Terms and conditions

- Guarantee only valid for products bought direct from Abcam or one of our authorized distributors