

Product datasheet

Anti-6X His tag® antibody [RMH01] ab219465

Recombinant

1 References 3 Images

Overview

Product name	Anti-6X His tag® antibody [RMH01]
Description	Human monoclonal [RMH01] to 6X His tag®
Host species	Human
Specificity	ab219465 reacts to recombinant proteins containing the 6xHis-Tag or 10xHis-Tag fused to either the amino or carboxy terminus. No cross reactivity with any endogenous protein in mammalian or bacteria cells.
Tested applications	Suitable for: ELISA, Sandwich ELISA, WB
Species reactivity	Reacts with: Species independent
Immunogen	Synthetic peptide (His-tag). (Mixture of a peptide with 6xHis-Tag at the N-terminus and another peptide with 6xHis-Tag at the C-terminus).
Positive control	WB: 293T cells transfected with a DNA construct encoding His-Tag Histone H3 (K36M) protein; Sandwich ELISA: 293T cells transfected with a DNA construct encoding His-Tag Histone H3 (G34W) protein; purified HisTag-PCSK9 recombinant protein
General notes	ab219465 is a Human-Rabbit chimeric antibody, made by fusion of the antigen binding region (variable domains of the heavy and light chains, VH and VL) of rabbit anti-HisTag monoclonal antibody (ab200537), with the constant domain of Human IgG1. The antibody is recognized only by an anti-Human IgG secondary antibody.

Properties

Form	Liquid
Storage instructions	Shipped at 4°C. Store at +4°C short term (1-2 weeks). Upon delivery aliquot. Store at -20°C long term. Avoid freeze / thaw cycle.
Storage buffer	Preservative: 0.09% Sodium azide Constituents: 50% Glycerol, 49% PBS
Purity	Protein A purified
Purification notes	ab219465 was purified from an animal origin-free culture supernatant.
Clonality	Monoclonal
Clone number	RMH01

Applications

Our [Abpromise guarantee](#) covers the use of **ab219465** in the following tested applications.

The application notes include recommended starting dilutions; optimal dilutions/concentrations should be determined by the end user.

Application	Abreviews	Notes
ELISA		Use at an assay dependent concentration.
Sandwich ELISA		Use at an assay dependent concentration.
WB		Use a concentration of 0.2 µg/ml.

Target

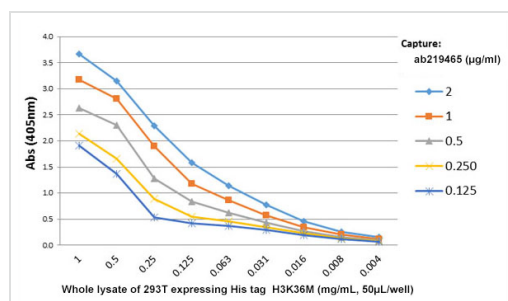
Relevance

The H-H-H-H-H-H motif is used as a tag on many recombinant proteins to facilitate purification. The antibody recognizes the His-tag fused to the amino- or carboxy- termini of targeted proteins in transfected or transformed cells.

Cellular localization

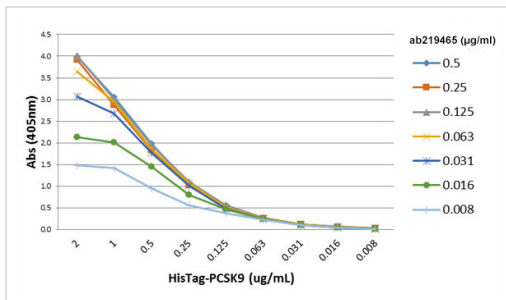
Depends upon the localization of the parent protein tagged with hexahistidine.

Images



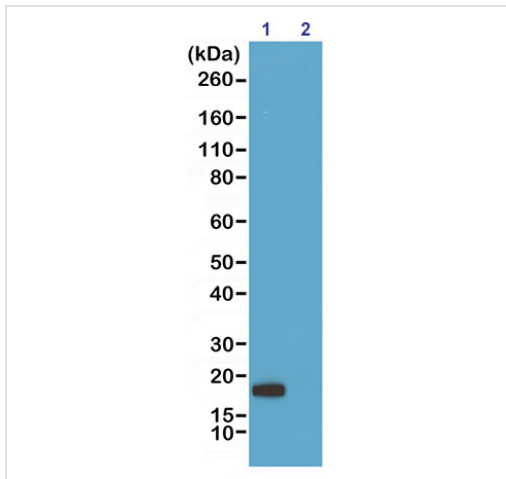
Sandwich ELISA - Anti-6XHis tag® antibody
[RMH101] (ab219465)

Sandwich ELISA performed on different amounts of whole lysate of 293T cells transfected with a DNA construct encoding HisTag Histone H3 (K36M) protein, using 50µL/well of different concentrations of ab219465 as the capture antibody. Anti-H3K36M rabbit monoclonal antibody (RM193) was used as the detection antibody, followed by an alkaline phosphatase conjugated anti-Rabbit IgG as the Secondary antibody.



ELISA - Anti-6X His tag® antibody [RMH101]
(ab219465)

A titer ELISA performed on purified HisTag-PCSK9 recombinant protein. A serial dilution of ab219465 was used as the primary antibody. An alkaline phosphatase conjugated anti-Human IgG as the secondary antibody



Western blot - Anti-6X His tag® antibody [RMH101]
(ab219465)

All lanes : Anti-6X His tag® antibody [RMH01] (ab219465) at 0.2 µg/ml

Lane 1 : 293T cells transfected with a DNA construct encoding His-Tag Histone H3 (G34W) protein

Lane 2 : 293T cells untransfected with a DNA construct encoding His-Tag Histone H3 (G34W) protein

Secondary

All lanes : HRP conjugated anti-Human IgG secondary antibody

Please note: All products are "FOR RESEARCH USE ONLY. NOT FOR USE IN DIAGNOSTIC PROCEDURES"

Our Abpromise to you: Quality guaranteed and expert technical support

- Replacement or refund for products not performing as stated on the datasheet
- Valid for 12 months from date of delivery
- Response to your inquiry within 24 hours
- We provide support in Chinese, English, French, German, Japanese and Spanish
- Extensive multi-media technical resources to help you
- We investigate all quality concerns to ensure our products perform to the highest standards

If the product does not perform as described on this datasheet, we will offer a refund or replacement. For full details of the Abpromise, please visit <https://www.abcam.com/abpromise> or contact our technical team.

Terms and conditions

- Guarantee only valid for products bought direct from Abcam or one of our authorized distributors