


## Product datasheet

# Anti-A RAF (phospho S299) antibody ab112053

1 Image

### Overview

<b>Product name</b>	Anti-A RAF (phospho S299) antibody
<b>Description</b>	Rabbit polyclonal to A RAF (phospho S299)
<b>Host species</b>	Rabbit
<b>Specificity</b>	ab112053 detects endogenous levels of A RAF only when phosphorylated at serine 299.
<b>Tested applications</b>	<b>Suitable for:</b> IHC-P
<b>Species reactivity</b>	<b>Reacts with:</b> Human <b>Predicted to work with:</b> Mouse, Rat 
<b>Immunogen</b>	Synthetic phosphopeptide derived from Human A RAF around the phosphorylation site of serine 299 (R-D-S <sup>P</sup> -G-Y).
<b>Positive control</b>	Human colon carcinoma tissue.

### Properties

<b>Form</b>	Liquid
<b>Storage instructions</b>	Shipped at 4°C. Store at -20°C. Stable for 12 months at -20°C.
<b>Storage buffer</b>	pH: 7.40 Preservative: 0.02% Sodium azide Constituents: 0.88% Sodium chloride, 50% Glycerol, 49% PBS
<b>Purity</b>	Immunogen affinity purified
<b>Purification notes</b>	ab112053 was affinity-purified from Rabbit antiserum by affinity-chromatography using epitope-specific phosphopeptide. The antibody against non-phosphopeptide was removed by chromatography using non-phosphopeptide corresponding to the phosphorylation site.
<b>Clonality</b>	Polyclonal
<b>Isotype</b>	IgG

### Applications

Our [Abpromise guarantee](#) covers the use of **ab112053** in the following tested applications.

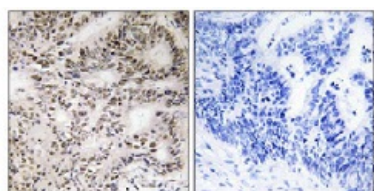
The application notes include recommended starting dilutions; optimal dilutions/concentrations should be determined by the end user.

Application	Abreviews	Notes
IHC-P		1/50 - 1/100. Perform heat mediated antigen retrieval with citrate buffer pH 6 before commencing with IHC staining protocol.

## Target

<b>Function</b>	Involved in the transduction of mitogenic signals from the cell membrane to the nucleus.
<b>Tissue specificity</b>	Predominantly in urogenital tissues.
<b>Sequence similarities</b>	Belongs to the protein kinase superfamily. TKL Ser/Thr protein kinase family. RAF subfamily. Contains 1 phorbol-ester/DAG-type zinc finger. Contains 1 protein kinase domain. Contains 1 RBD (Ras-binding) domain.

## Images



ab112053 at 1/50 dilution staining A RAF in Paraffin-embedded Human colon carcinoma tissue by Immunohistochemistry. The image on the right is treated with the synthesized phospho peptide.

Immunohistochemistry (Formalin/PFA-fixed paraffin-embedded sections) - Anti-A RAF (phospho S299) antibody (ab112053)

**Please note:** All products are "FOR RESEARCH USE ONLY AND ARE NOT INTENDED FOR DIAGNOSTIC OR THERAPEUTIC USE"

## Our Abpromise to you: Quality guaranteed and expert technical support

- Replacement or refund for products not performing as stated on the datasheet
- Valid for 12 months from date of delivery
- Response to your inquiry within 24 hours
- We provide support in Chinese, English, French, German, Japanese and Spanish
- Extensive multi-media technical resources to help you
- We investigate all quality concerns to ensure our products perform to the highest standards

If the product does not perform as described on this datasheet, we will offer a refund or replacement. For full details of the Abpromise, please visit <https://www.abcam.com/abpromise> or contact our technical team.

## Terms and conditions

- Guarantee only valid for products bought direct from Abcam or one of our authorized distributors