

## Product datasheet

# Anti-ABLIM3 antibody ab67721

★★★★☆ 1 Abreviews 2 Images

### Overview

|                            |   |
|----------------------------|---|
| <b>Product name</b>        | Anti-ABLIM3 antibody  |
| <b>Description</b>         | Mouse polyclonal to ABLIM3  |
| <b>Host species</b>        | Mouse   |
| <b>Tested applications</b> | <b>Suitable for:</b> WB, IHC-Fr   |
| <b>Species reactivity</b>  | <b>Reacts with:</b> Mouse<br><b>Predicted to work with:</b> Human       |
| <b>Immunogen</b>           | Full length protein, corresponding to amino acids 1-544 of Human ABLIM3 |

### Properties

|                             |   |
|-----------------------------|---|
| <b>Form</b>                 | Liquid  |
| <b>Storage instructions</b> | Shipped at 4°C. Upon delivery aliquot and store at -20°C or -80°C. Avoid repeated freeze / thaw cycles. |
| <b>Storage buffer</b>       | Constituent: PBS  |
| <b>Purity</b>               | Protein A purified  |
| <b>Clonality</b>            | Polyclonal  |
| <b>Isotype</b>              | IgG   |

### Applications

Our [Abpromise guarantee](#) covers the use of **ab67721** in the following tested applications.

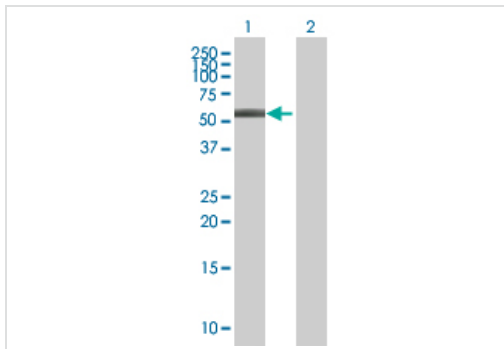
The application notes include recommended starting dilutions; optimal dilutions/concentrations should be determined by the end user.

| Application | Abreviews | Notes   |
|-------------|-----------|---|
| WB          |           | 1/500 - 1/1000. Predicted molecular weight: 78 kDa. |
| IHC-Fr      | ★★★★☆     | Use at an assay dependent concentration.            |

### Target

|                              |   |
|------------------------------|---|
| <b>Function</b>              | May act as scaffold protein. May stimulate ABRA activity and ABRA-dependent SRF transcriptional activity. |
| <b>Tissue specificity</b>    | Expressed predominantly in heart and brain.   |
| <b>Sequence similarities</b> | Contains 1 HP (headpiece) domain.<br>Contains 4 LIM zinc-binding domains.                                 |
| <b>Cellular localization</b> | Cytoplasm.  |

## Images



Western blot - Anti-ABLIM3 antibody (ab67721)

**All lanes** : Anti-ABLIM3 antibody (ab67721)  
at 1/500 dilution

**Lane 1** : ABLIM3 transfected 293T cell lysate

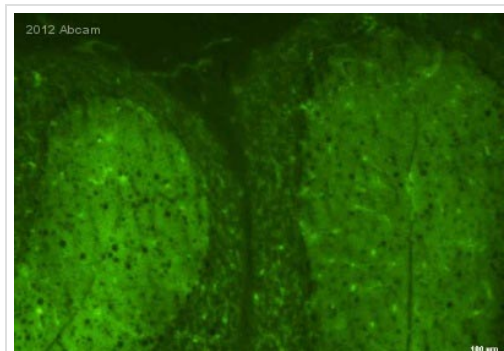
**Lane 2** : Non transfected 293T cell lysate

Lysates/proteins at 25 µg per lane.

### Secondary

**All lanes** : Goat Anti-Mouse IgG (H&L)-HRP  
conjugated at 1/2500 dilution

**Predicted band size:** 78 kDa



Immunohistochemistry (Frozen sections) - Anti-ABLIM3 antibody (ab67721)

Image courtesy of Dr Amar Sahay by Abreview.

ab67721 staining ABLIM3 in murine cerebellum tissue by Immunohistochemistry (Frozen sections).

Tissue was fixed with acetone, blocked with 1% BSA for 1 hour at 25°C and then incubated with ab67721 at a 1/200 dilution for 24 hours at 4°C. The secondary used was an Alexa-Fluor 488 conjugated donkey anti-mouse polyclonal used at a 1/400 dilution.

**Please note:** All products are "FOR RESEARCH USE ONLY AND ARE NOT INTENDED FOR DIAGNOSTIC OR THERAPEUTIC USE"

## Our Abpromise to you: Quality guaranteed and expert technical support

- Replacement or refund for products not performing as stated on the datasheet
- Valid for 12 months from date of delivery

- Response to your inquiry within 24 hours
- We provide support in Chinese, English, French, German, Japanese and Spanish
- Extensive multi-media technical resources to help you
- We investigate all quality concerns to ensure our products perform to the highest standards

If the product does not perform as described on this datasheet, we will offer a refund or replacement. For full details of the Abpromise, please visit <https://www.abcam.com/abpromise> or contact our technical team.

### **Terms and conditions**

---

- Guarantee only valid for products bought direct from Abcam or one of our authorized distributors