

Product datasheet

Anti-ALDH1A1 antibody [mAbcam61293] ab61293

★★★★☆ 1 Abreviews 1 Image

Overview

Product name	Anti-ALDH1A1 antibody [mAbcam61293]
Description	Mouse monoclonal [mAbcam61293] to ALDH1A1
Host species	Mouse
Tested applications	Suitable for: WB Unsuitable for: Flow Cyt
Species reactivity	Reacts with: Human
Immunogen	Synthetic peptide conjugated to KLH derived from within residues 300 - 400 of Human ALDH1A1. Read Abcam's proprietary immunogen policy (Peptide available as ab92717 .)
Positive control	This antibody gave a positive signal in human liver and kidney tissue lysates.
General notes	This antibody clone is manufactured by Abcam. If you require this antibody in a particular buffer formulation or a particular conjugate for your experiments, please contact orders@abcam.com or you can find further information here .

Properties

Form	Liquid
Storage instructions	Shipped at 4°C. Store at +4°C short term (1-2 weeks). Upon delivery aliquot. Store at -20°C or -80°C. Avoid freeze / thaw cycle.
Storage buffer	pH: 7.40 Preservative: 0.02% Sodium azide Constituents: PBS, 1% BSA
Purity	IgG fraction
Clonality	Monoclonal
Clone number	mAbcam61293
Myeloma	Sp2/0-Ag14
Isotype	IgG1

Applications

Our [Abpromise guarantee](#) covers the use of **ab61293** in the following tested applications.

The application notes include recommended starting dilutions; optimal dilutions/concentrations should be determined by the end user.

Application	Abreviews	Notes
WB		Use a concentration of 10 µg/ml. Detects a band of approximately 55 kDa (predicted molecular weight: 55 kDa).

Application notes Is unsuitable for Flow Cyt.

Target

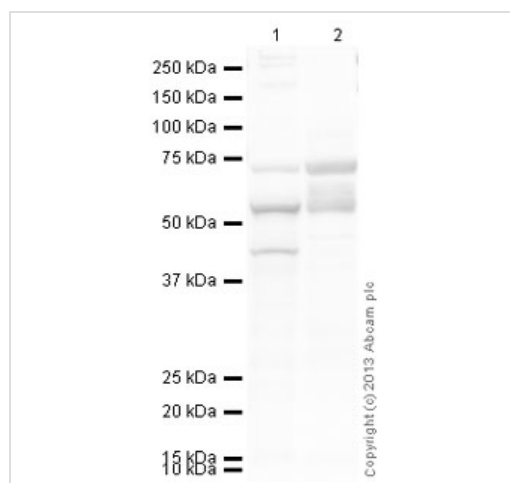
Function Binds free retinal and cellular retinol-binding protein-bound retinal. Can convert/oxidize retinaldehyde to retinoic acid.

Pathway Cofactor metabolism; retinol metabolism.

Sequence similarities Belongs to the aldehyde dehydrogenase family.

Cellular localization Cytoplasm.

Images



Western blot - Anti-ALDH1A1 antibody [mAbcam61293] (ab61293)

All lanes : Anti-ALDH1A1 antibody [mAbcam61293] (ab61293) at 10 µg/ml

Lane 1 : Human liver tissue lysate - total protein ([ab29889](#))

Lane 2 : Human kidney tissue lysate - total protein ([ab30203](#))

Lysates/proteins at 20 µg per lane.

Secondary

All lanes : Goat Anti-Mouse IgG H&L (HRP) preadsorbed ([ab97040](#)) at 1/10000 dilution

Developed using the ECL technique.

Performed under reducing conditions.

Predicted band size: 55 kDa

Observed band size: 54 kDa

[why is the actual band size different from the predicted?](#)

Additional bands at: 42 kDa, 74 kDa. We are unsure as to the identity of these extra bands.

Exposure time: 4 minutes

Our Abpromise to you: Quality guaranteed and expert technical support

- Replacement or refund for products not performing as stated on the datasheet
- Valid for 12 months from date of delivery
- Response to your inquiry within 24 hours

- We provide support in Chinese, English, French, German, Japanese and Spanish
- Extensive multi-media technical resources to help you
- We investigate all quality concerns to ensure our products perform to the highest standards

If the product does not perform as described on this datasheet, we will offer a refund or replacement. For full details of the Abpromise, please visit <https://www.abcam.com/abpromise> or contact our technical team.

Terms and conditions

- Guarantee only valid for products bought direct from Abcam or one of our authorized distributors