

Product datasheet

Anti-AMHR2 antibody - Aminoterminal end ab75845

[2 Images](#)

Overview

Product name	Anti-AMHR2 antibody - Aminoterminal end
Description	Rabbit polyclonal to AMHR2 - Aminoterminal end
Host species	Rabbit
Tested applications	Suitable for: WB, ELISA, ICC/IF
Species reactivity	Reacts with: Human
Immunogen	KLH conjugated synthetic peptide selected from the N terminal region of human AMHR2.
Positive control	Transfected 293 cell lysates. This antibody gave a positive result when used in the following formaldehyde fixed cell lines: A549

Properties

Form	Liquid
Storage instructions	Shipped at 4°C. Upon delivery aliquot and store at -20°C. Avoid freeze / thaw cycles.
Storage buffer	Preservative: 0.09% Sodium Azide Constituents: PBS
Purity	Ammonium Sulphate Precipitation
Purification notes	This antibody is prepared by Saturated Ammonium Sulfate precipitation followed by dialysis against PBS.
Clonality	Polyclonal
Isotype	IgG

Applications

Our [Abpromise guarantee](#) covers the use of **ab75845** in the following tested applications.

The application notes include recommended starting dilutions; optimal dilutions/concentrations should be determined by the end user.

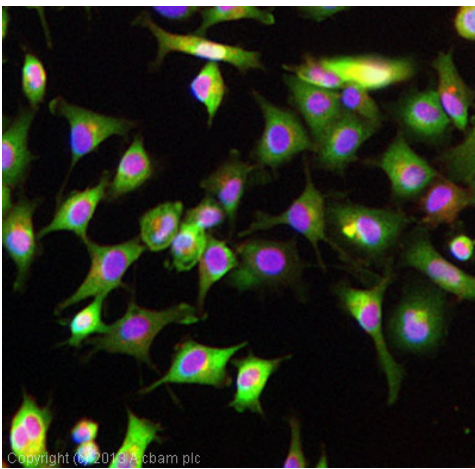
Application	Abreviews	Notes
WB		1/50 - 1/100. Predicted molecular weight: 63 kDa.
ELISA		1/1000.

Application	Abreviews	Notes
ICC/IF		Use a concentration of 5 µg/ml.

Target

Function	On ligand binding, forms a receptor complex consisting of two type II and two type I transmembrane serine/threonine kinases. Type II receptors phosphorylate and activate type I receptors which autophosphorylate, then bind and activate SMAD transcriptional regulators. Receptor for anti-Muellerian hormone.
Involvement in disease	Defects in AMHR2 are the cause of persistent Muellerian duct syndrome type 2 (PMDS2) [MIM:261550]. PMDS2 is a form of male pseudohermaphroditism characterized by a failure of Muellerian duct regression in otherwise normal males.
Sequence similarities	Belongs to the protein kinase superfamily. TKL Ser/Thr protein kinase family. TGFB receptor subfamily. Contains 1 protein kinase domain.
Cellular localization	Membrane.

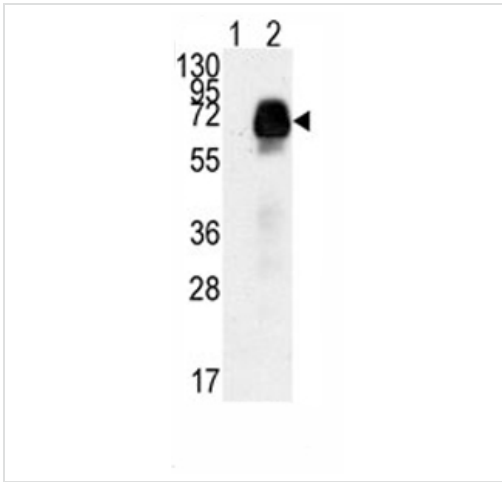
Images



Immunocytochemistry/ Immunofluorescence - Anti-AMHR2 antibody - Aminoterminal end (ab75845)

ICC/IF image of ab75845 stained A549 cells.

The cells were 4% formaldehyde fixed (10 min) and then incubated in 1%BSA / 10% normal goat serum / 0.3M glycine in 0.1% PBS-Tween for 1h to permeabilise the cells and block non-specific protein-protein interactions. The cells were then incubated with the antibody ab75845 at 5µg/ml overnight at +4°C. The secondary antibody (green) was DyLight® 488 goat anti- rabbit (ab96899) IgG (H+L) used at a 1/250 dilution for 1h. Alexa Fluor® 594 WGA was used to label plasma membranes (red) at a 1/200 dilution for 1h. DAPI was used to stain the cell nuclei (blue) at a concentration of 1.43µM.



Western blot - Anti-AMHR2 antibody -
Aminoterminal end (ab75845)

All lanes : Anti-AMHR2 antibody -
Aminoterminal end (ab75845) at 1/50 dilution

Lane 1 : Non transfected 293 cell lysates

Lane 2 : Transiently transfected 293 cell
lysates

Lysates/proteins at 2 µg per lane.

Predicted band size: 63 kDa

Observed band size: 63 kDa

Please note: All products are "FOR RESEARCH USE ONLY AND ARE NOT INTENDED FOR DIAGNOSTIC OR THERAPEUTIC USE"

Our Abpromise to you: Quality guaranteed and expert technical support

- Replacement or refund for products not performing as stated on the datasheet
- Valid for 12 months from date of delivery
- Response to your inquiry within 24 hours
- We provide support in Chinese, English, French, German, Japanese and Spanish
- Extensive multi-media technical resources to help you
- We investigate all quality concerns to ensure our products perform to the highest standards

If the product does not perform as described on this datasheet, we will offer a refund or replacement. For full details of the Abpromise, please visit <https://www.abcam.com/abpromise> or contact our technical team.

Terms and conditions

- Guarantee only valid for products bought direct from Abcam or one of our authorized distributors