

Product datasheet

Anti-APRIL antibody [EPR4286] ab108206

Recombinant **RabMAB**

1 Abreviews 1 Image

Overview

Product name	Anti-APRIL antibody [EPR4286]
Description	Rabbit monoclonal [EPR4286] to APRIL
Host species	Rabbit
Tested applications	Suitable for: WB, ICC
Species reactivity	Reacts with: Mouse, Rat, Human
Immunogen	Synthetic peptide within Human APRIL aa 150-250. The exact sequence is proprietary.
Positive control	Raji, Jurkat, HeLa, PC-12 or NIH 3T3 cell lysate.
General notes	

Our RabMAB[®] technology is a patented hybridoma-based technology for making rabbit monoclonal antibodies. For details on our patents, please refer to [RabMab[®] patents](#)

This product is a recombinant rabbit monoclonal antibody.

Properties

Form	Liquid
Storage instructions	Shipped at 4°C. Upon delivery aliquot and store at -20°C. Avoid freeze / thaw cycles.
Storage buffer	pH: 7.20 Preservative: 0.05% Sodium azide Constituents: 0.1% BSA, 40% Glycerol, 9.85% Tris glycine, 50% Tissue culture supernatant
Purity	Tissue culture supernatant
Clonality	Monoclonal
Clone number	EPR4286
Isotype	IgG

Applications

Our [Abpromise guarantee](#) covers the use of **ab108206** in the following tested applications.

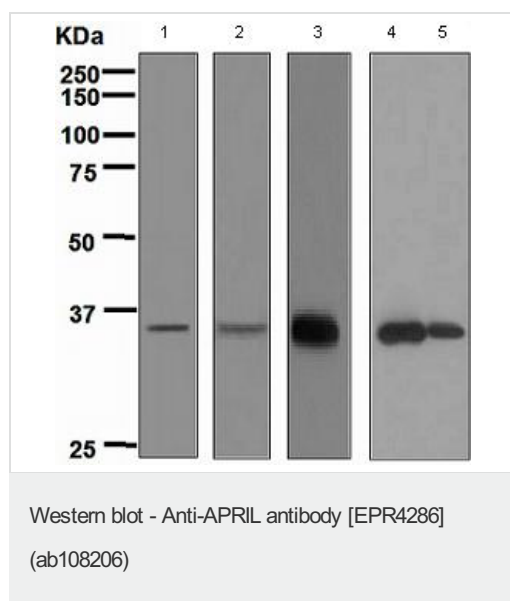
The application notes include recommended starting dilutions; optimal dilutions/concentrations should be determined by the end user.

Application	Abreviews	Notes
WB		1/1000 - 1/10000. Predicted molecular weight: 27 kDa.
ICC		1/100 - 1/250.

Target

Function	Cytokine that binds to TNFRSF13B/TACI and to TNFRSF17/BCMA. May be implicated in the regulation of tumor cell growth. May be involved in monocyte/macrophage-mediated immunological processes.
Tissue specificity	Expressed at high levels in transformed cell lines, cancers of colon, thyroid, lymphoid tissues and specifically expressed in monocytes and macrophages.
Sequence similarities	Belongs to the tumor necrosis factor family.
Post-translational modifications	The precursor is cleaved by furin.
Cellular localization	Secreted.

Images



All lanes : Anti-APRIL antibody [EPR4286] (ab108206) at 1/1000 dilution

- Lane 1 :** Raji cell lysate
- Lane 2 :** Jurkat cell lysate
- Lane 3 :** HeLa cell lysate
- Lane 4 :** PC-12 cell lysate
- Lane 5 :** NIH 3T3 cell lysate

Lysates/proteins at 10 µg per lane.

Predicted band size: 27 kDa

Please note: All products are "FOR RESEARCH USE ONLY AND ARE NOT INTENDED FOR DIAGNOSTIC OR THERAPEUTIC USE"

Our Promise to you: Quality guaranteed and expert technical support

- Replacement or refund for products not performing as stated on the datasheet
- Valid for 12 months from date of delivery
- Response to your inquiry within 24 hours

- We provide support in Chinese, English, French, German, Japanese and Spanish
- Extensive multi-media technical resources to help you
- We investigate all quality concerns to ensure our products perform to the highest standards

If the product does not perform as described on this datasheet, we will offer a refund or replacement. For full details of the Abpromise, please visit <https://www.abcam.com/abpromise> or contact our technical team.

Terms and conditions

- Guarantee only valid for products bought direct from Abcam or one of our authorized distributors