

## Product datasheet

# Anti-ARF5 antibody [EPR7050] ab125023

Recombinant RabMAB

3 Images

### Overview

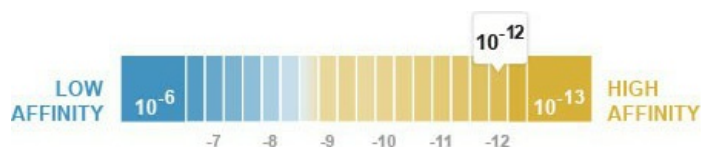
<b>Product name</b>	Anti-ARF5 antibody [EPR7050]
<b>Description</b>	Rabbit monoclonal [EPR7050] to ARF5
<b>Host species</b>	Rabbit
<b>Tested applications</b>	<b>Suitable for:</b> WB, Flow Cyt <b>Unsuitable for:</b> ICC, IHC-P or IP
<b>Species reactivity</b>	<b>Reacts with:</b> Mouse, Rat, Human
<b>Immunogen</b>	Synthetic peptide within Human ARF5 aa 150-250 (C terminal). The exact sequence is proprietary.
<b>Positive control</b>	HeLa and Molt4 cell lysates; HeLa cells
<b>General notes</b>	

Our RabMAB<sup>®</sup> technology is a patented hybridoma-based technology for making rabbit monoclonal antibodies. For details on our patents, please refer to [RabMab<sup>®</sup> patents](#)

This product is a recombinant rabbit monoclonal antibody.

### Properties

<b>Form</b>	Liquid
<b>Storage instructions</b>	Shipped at 4°C. Store at -20°C. Stable for 12 months at -20°C.
<b>Dissociation constant (K<sub>D</sub>)</b>	K <sub>D</sub> = 2.60 x 10 <sup>-12</sup> M



[Learn more about K<sub>D</sub>](#)

<b>Storage buffer</b>	pH: 7.20 Preservative: 0.01% Sodium azide Constituents: 9% PBS, 40% Glycerol, 0.05% BSA, 50% Tissue culture supernatant
<b>Purity</b>	Tissue culture supernatant

<b>Clonality</b>	Monoclonal
<b>Clone number</b>	EPR7050
<b>Isotype</b>	IgG

## Applications

Our [Abpromise guarantee](#) covers the use of **ab125023** in the following tested applications.

The application notes include recommended starting dilutions; optimal dilutions/concentrations should be determined by the end user.

Application	Abreviews	Notes
WB		1/1000 - 1/10000. Detects a band of approximately 18 kDa (predicted molecular weight: 20 kDa).
Flow Cyt		1/10 - 1/100. <a href="#">ab172730</a> - Rabbit monoclonal IgG, is suitable for use as an isotype control with this antibody.

**Application notes** Is unsuitable for ICC, IHC-P or IP.

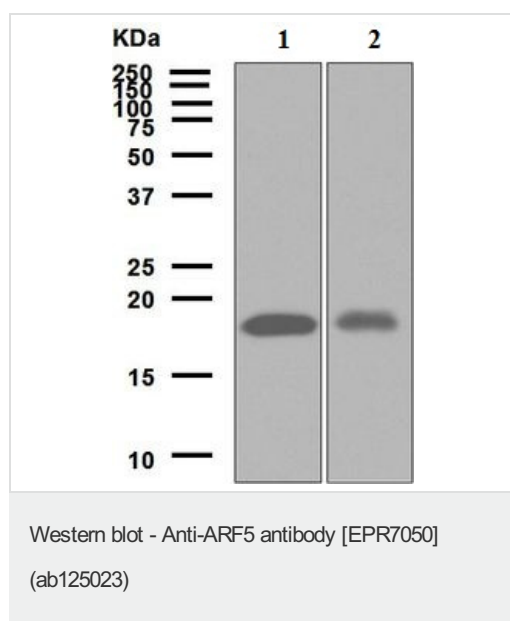
## Target

**Function** GTP-binding protein that functions as an allosteric activator of the cholera toxin catalytic subunit, an ADP-ribosyltransferase. Involved in protein trafficking; may modulate vesicle budding and uncoating within the Golgi apparatus.

**Sequence similarities** Belongs to the small GTPase superfamily. Arf family.

**Cellular localization** Golgi apparatus. Cytoplasm > perinuclear region.

## Images



**All lanes** : Anti-ARF5 antibody [EPR7050] (ab125023) at 1/1000 dilution

**Lane 1** : HeLa cell lysate

**Lane 2** : Molt4 cell lysate

Lysates/proteins at 10 µg per lane.

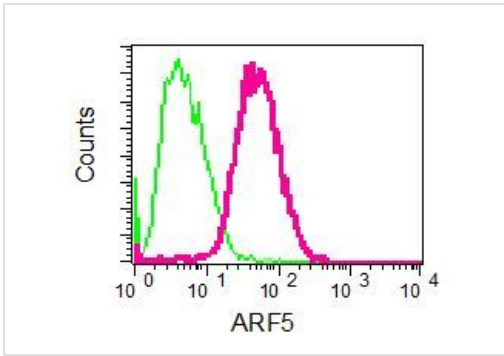
### Secondary

**All lanes** : HRP labelled goat anti-rabbit at 1/2000 dilution

**Predicted band size:** 20 kDa

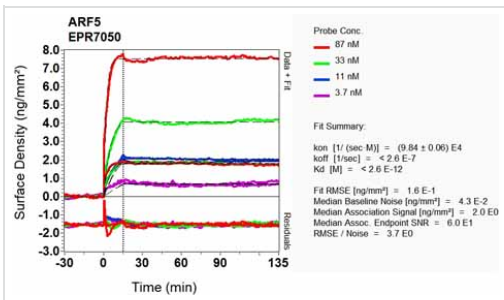
**Observed band size:** 18 kDa

[why is the actual band size different from the predicted?](#)



Flow cytometric analysis of permeabilized HeLa cells using ab125023 at a 1/10 dilution (red) or a rabbit IgG (negative) (green).

Flow Cytometry - Anti-ARF5 antibody [EPR7050] (ab125023)



Equilibrium dissociation constant ( $K_D$ )

Learn more about  $K_D$

[Click here to learn more about  \$K\_D\$](#)

Other - Anti-ARF5 antibody [EPR7050] (ab125023)

**Please note:** All products are "FOR RESEARCH USE ONLY AND ARE NOT INTENDED FOR DIAGNOSTIC OR THERAPEUTIC USE"

## Our Abpromise to you: Quality guaranteed and expert technical support

- Replacement or refund for products not performing as stated on the datasheet
- Valid for 12 months from date of delivery
- Response to your inquiry within 24 hours
- We provide support in Chinese, English, French, German, Japanese and Spanish
- Extensive multi-media technical resources to help you
- We investigate all quality concerns to ensure our products perform to the highest standards

If the product does not perform as described on this datasheet, we will offer a refund or replacement. For full details of the Abpromise, please visit <https://www.abcam.com/abpromise> or contact our technical team.

## Terms and conditions

- Guarantee only valid for products bought direct from Abcam or one of our authorized distributors