

Product datasheet

Anti-ATPB antibody ab93643

[2 Images](#)

Overview

Product name	Anti-ATPB antibody
Description	Rabbit polyclonal to ATPB
Host species	Rabbit
Tested applications	Suitable for: WB, IHC-P
Species reactivity	Reacts with: Human
Immunogen	Synthetic peptide corresponding to Human ATPB (C terminal). Database link: NM_001686
Positive control	QGY-7703, SMMC-7721 and PRF-5 cell lysates. Human brain tissue.

Properties

Form	Liquid
Storage instructions	Shipped at 4°C. Store at -20°C. Stable for 12 months at -20°C.
Storage buffer	Preservative: 0.02% Sodium Azide Constituents: PBS, pH 7.4
Purity	Protein A purified
Clonality	Polyclonal
Isotype	IgG

Applications

Our [Abpromise guarantee](#) covers the use of **ab93643** in the following tested applications.

The application notes include recommended starting dilutions; optimal dilutions/concentrations should be determined by the end user.

Application	Abreviews	Notes
WB		1/500 - 1/1000. Predicted molecular weight: 57 kDa.
IHC-P		1/50 - 1/500.

Target

Function

Mitochondrial membrane ATP synthase (F(1)F(0) ATP synthase or Complex V) produces ATP from ADP in the presence of a proton gradient across the membrane which is generated by electron transport complexes of the respiratory chain. F-type ATPases consist of two structural domains, F(1) - containing the extramembraneous catalytic core, and F(0) - containing the membrane proton channel, linked together by a central stalk and a peripheral stalk. During catalysis, ATP synthesis in the catalytic domain of F(1) is coupled via a rotary mechanism of the central stalk subunits to proton translocation. Subunits alpha and beta form the catalytic core in F(1). Rotation of the central stalk against the surrounding alpha(3)beta(3) subunits leads to hydrolysis of ATP in three separate catalytic sites on the beta subunits.

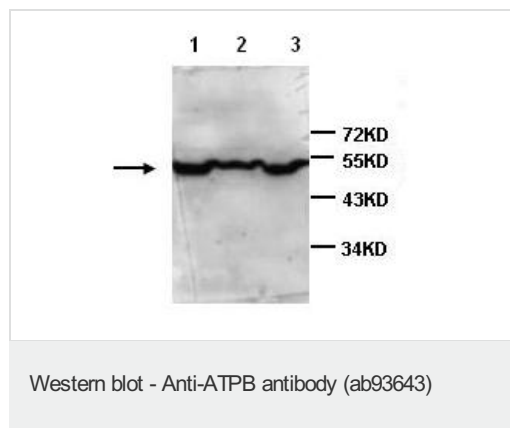
Sequence similarities

Belongs to the ATPase alpha/beta chains family.

Cellular localization

Mitochondrion. Mitochondrion inner membrane. Peripheral membrane protein.

Images



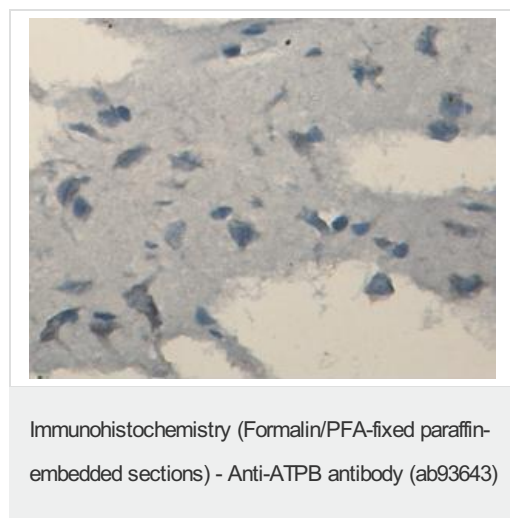
All lanes : Anti-ATPB antibody (ab93643) at 1/500 dilution

Lane 1 : QGY-7703 cell lysate

Lane 2 : SMMC-7721 cell lysate

Lane 3 : PRF-5 cell lysate

Predicted band size: 57 kDa



ab93643, at 1/100 dilution, staining ATPB in formalin-fixed paraffin-embedded Human brain tissue

Please note: All products are "FOR RESEARCH USE ONLY AND ARE NOT INTENDED FOR DIAGNOSTIC OR THERAPEUTIC USE"

Our Abpromise to you: Quality guaranteed and expert technical support

- Replacement or refund for products not performing as stated on the datasheet

- Valid for 12 months from date of delivery
- Response to your inquiry within 24 hours

- We provide support in Chinese, English, French, German, Japanese and Spanish
- Extensive multi-media technical resources to help you
- We investigate all quality concerns to ensure our products perform to the highest standards

If the product does not perform as described on this datasheet, we will offer a refund or replacement. For full details of the Abpromise, please visit <https://www.abcam.com/abpromise> or contact our technical team.

Terms and conditions

- Guarantee only valid for products bought direct from Abcam or one of our authorized distributors