

Product datasheet

Anti-Ago1 antibody ab18190

4 References 2 Images

Overview

Product name	Anti-Ago1 antibody
Description	Rabbit polyclonal to Ago1
Host species	Rabbit
Tested applications	Suitable for: WB
Species reactivity	Reacts with: Schizosaccharomyces pombe
Immunogen	Synthetic peptide conjugated to KLH derived from within residues 350 - 450 of Schizosaccharomyces pombe Ago1. Read Abcam's proprietary immunogen policy
Positive control	This antibody gave a positive signal in S. Pombe whole cell lysate.

Properties

Form	Liquid
Storage instructions	Shipped at 4°C. Store at +4°C short term (1-2 weeks). Upon delivery aliquot. Store at -20°C or -80°C. Avoid freeze / thaw cycle.
Storage buffer	Preservative: 0.02% Sodium Azide Constituents: 1% BSA, PBS, pH 7.4
Purity	Immunogen affinity purified
Clonality	Polyclonal
Isotype	IgG

Applications

Our [Abpromise guarantee](#) covers the use of **ab18190** in the following tested applications.

The application notes include recommended starting dilutions; optimal dilutions/concentrations should be determined by the end user.

Application	Abreviews	Notes
WB		Use a concentration of 1 µg/ml. Detects a band of approximately 85 kDa (predicted molecular weight: 95 kDa).

Target

Function

Required for RNA-mediated gene silencing (RNAi). Binds to short RNAs such as microRNAs (miRNAs) or short interfering RNAs (siRNAs), and represses the translation of mRNAs which are complementary to them. Lacks endonuclease activity and does not appear to cleave target mRNAs. Also required for transcriptional gene silencing (TGS) of promoter regions which are complementary to bound short antigene RNAs (agRNAs).

Sequence similarities

Belongs to the argonaute family. Ago subfamily.

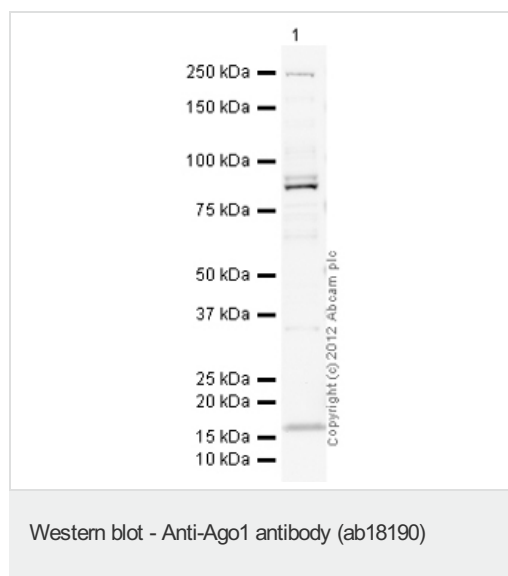
Contains 1 PAZ domain.

Contains 1 Piwi domain.

Cellular localization

Cytoplasm > P-body.

Images



Anti-Ago1 antibody (ab18190) at 1 µg/ml +
S.pombe Whole Cell Lysate at 10 µg

Secondary

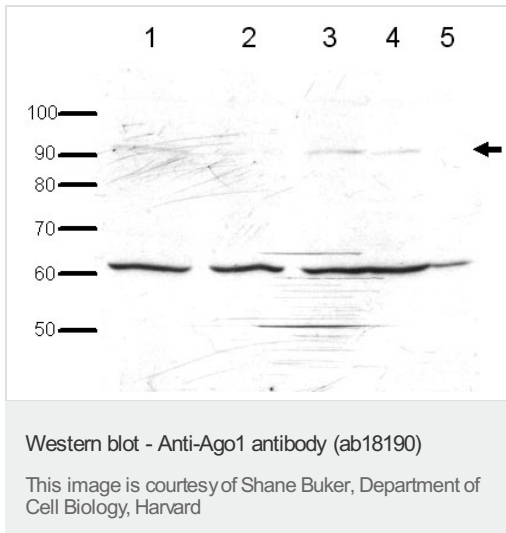
Goat Anti-Rabbit IgG H&L (HRP) preadsorbed
([ab97080](#)) at 1/5000 dilution

Predicted band size: 95 kDa

Observed band size: 85 kDa

Additional bands at: 16 kDa, 250 kDa, 90 kDa. We are unsure as to the identity of these extra bands.

Abcam recommends using milk as the blocking agent. Abcam welcomes customer feedback and would appreciate any comments regarding this product and the data presented above.



All lanes : Anti-Ago1 antibody (ab18190) at 1 µg/ml

Lane 1 : S.pombe wild-type whole cell extract

Lane 2 : S.pombe ago1Δ whole cell extract

Lane 3 : S.pombe endogenously expressed tagged Ago1 whole cell extract

Lane 4 : S.pombe over-expressed tagged Ago1 whole cell extract

Lane 5 : S.pombe repressed tagged Ago1 whole cell extract

Lysates/proteins at 20 µg per lane.

Predicted band size: 95 kDa

Observed band size: 95 kDa

Additional bands at: 60 kDa (possible cross reactivity)

ab18190 faintly recognises Ago1 in the wildtype and expressed tagged Ago1 strains at 95kDa but not in the Ago1Δ or repressed tagged Ago1 as expected. There is a non-specific band at 60kDa, which attributed to cross-reactivity.

Please note: All products are "FOR RESEARCH USE ONLY AND ARE NOT INTENDED FOR DIAGNOSTIC OR THERAPEUTIC USE"

Our Abpromise to you: Quality guaranteed and expert technical support

- Replacement or refund for products not performing as stated on the datasheet
- Valid for 12 months from date of delivery
- Response to your inquiry within 24 hours
- We provide support in Chinese, English, French, German, Japanese and Spanish
- Extensive multi-media technical resources to help you
- We investigate all quality concerns to ensure our products perform to the highest standards

If the product does not perform as described on this datasheet, we will offer a refund or replacement. For full details of the Abpromise, please visit <https://www.abcam.com/abpromise> or contact our technical team.

Terms and conditions

- Guarantee only valid for products bought direct from Abcam or one of our authorized distributors