

## Product datasheet

# Anti-Alpha B Crystallin antibody ab13497

★★★★★ 4 Abreviews 13 References 2 Images

### Overview

<b>Product name</b>	Anti-Alpha B Crystallin antibody
<b>Description</b>	Rabbit polyclonal to Alpha B Crystallin
<b>Host species</b>	Rabbit
<b>Tested applications</b>	<b>Suitable for:</b> IHC-Fr, WB, ICC, IP, IHC-P
<b>Species reactivity</b>	<b>Reacts with:</b> Mouse, Rat, Chicken, Cow, Human, Pig <b>Predicted to work with:</b> Rabbit, Hamster
<b>Immunogen</b>	Synthetic peptide: REEKPAVTAAPKK conjugated to KLH, corresponding to amino acids 163-175 of Human alpha B Crystallin. <a href="#">Run BLAST with</a> <a href="#">Run BLAST with</a>
<b>General notes</b>	For maximum product recovery, after thawing, centrifuge the product vial before removing cap

### Properties

<b>Form</b>	Liquid
<b>Storage instructions</b>	Shipped at 4°C. Store at +4°C short term (1-2 weeks). Upon delivery aliquot. Store at -20°C or -80°C. Avoid freeze / thaw cycle.
<b>Storage buffer</b>	Constituent: Whole serum
<b>Purity</b>	Whole antiserum
<b>Clonality</b>	Polyclonal
<b>Isotype</b>	IgG

### Applications

Our [Abpromise guarantee](#) covers the use of **ab13497** in the following tested applications.

The application notes include recommended starting dilutions; optimal dilutions/concentrations should be determined by the end user.

Application	Abreviews	Notes
IHC-Fr		Use at an assay dependent concentration.

Application	Abreviews	Notes
WB	★★★★★	1/1000 - 1/2000. Detects a band of approximately 22 kDa (predicted molecular weight: 20 kDa).
ICC		1/200.
IP		Use a concentration of 5 µg/ml.
IHC-P	★★★★☆	Use at an assay dependent concentration.

## Target

### Function

May contribute to the transparency and refractive index of the lens.

### Tissue specificity

Lens as well as other tissues.

### Involvement in disease

Defects in CRYAB are the cause of myofibrillar alpha-B crystallin-related (MFM-CRYAB) [MIM:608810]. A neuromuscular disorder that results in weakness of the proximal and distal limb muscles, weakness of the neck, velopharynx and trunk muscles, hypertrophic cardiomyopathy, and cataract in a subset of patients.

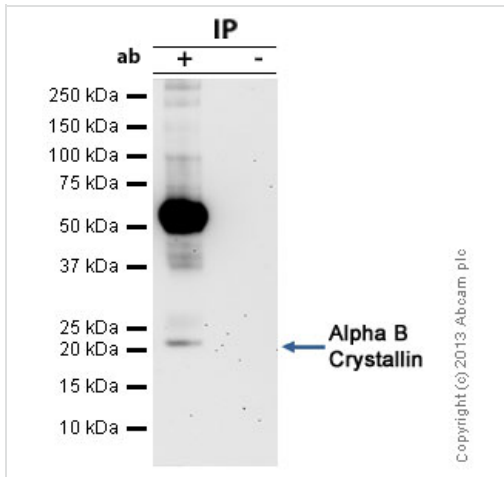
### Sequence similarities

Belongs to the small heat shock protein (HSP20) family.

### Cellular localization

Cytoplasm. Nucleus. Translocates to the nucleus during heat shock and resides in sub-nuclear structures known as SC35 speckles or nuclear splicing speckles.

## Images



Immunoprecipitation - Anti-Alpha B Crystallin antibody (ab13497)

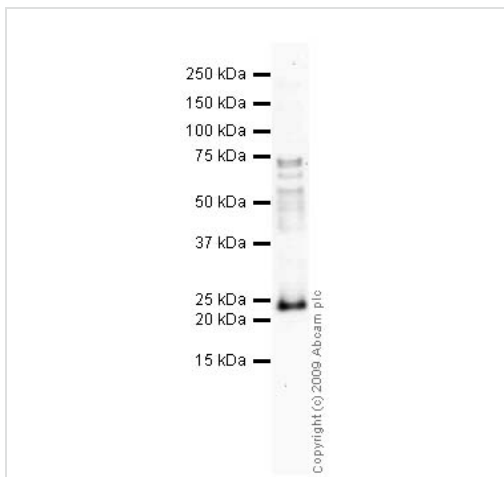
Alpha B Crystallin was immunoprecipitated using 0.5mg Mouse Spinal Cord tissue, 5µg of Rabbit polyclonal to Alpha B Crystallin and 50µl of protein G magnetic beads (+). No antibody was added to the control (-).

The antibody was incubated under agitation with Protein G beads for 10min, Mouse Spinal Cord tissue lysate diluted in RIPA buffer was added to each sample and incubated for a further 10min under agitation.

Proteins were eluted by addition of 40µl SDS loading buffer and incubated for 10min at 70°C; 10µl of each sample was separated on a SDS PAGE gel, transferred to a nitrocellulose membrane, blocked with 5% BSA and probed with ab13497.

Secondary: Mouse monoclonal [SB62a] Secondary Antibody to Rabbit IgG light chain (HRP) ([ab99697](#)).

Band: 22kDa; Alpha B Crystallin



Western blot - Anti-Alpha B Crystallin antibody (ab13497)

Anti-Alpha B Crystallin antibody (ab13497) at 1/1000 dilution + Human spinal cord tissue lysate - total protein ([ab29188](#)) at 10 µg

**Secondary**

Goat polyclonal to Rabbit IgG - H&L - Pre-Adsorbed (HRP) at 1/3000 dilution

**Predicted band size:** 20 kDa

**Observed band size:** 22 kDa

**Please note:** All products are "FOR RESEARCH USE ONLY AND ARE NOT INTENDED FOR DIAGNOSTIC OR THERAPEUTIC USE"

- Replacement or refund for products not performing as stated on the datasheet
- Valid for 12 months from date of delivery
- Response to your inquiry within 24 hours
  
- We provide support in Chinese, English, French, German, Japanese and Spanish
- Extensive multi-media technical resources to help you
- We investigate all quality concerns to ensure our products perform to the highest standards

If the product does not perform as described on this datasheet, we will offer a refund or replacement. For full details of the Abpromise, please visit <https://www.abcam.com/abpromise> or contact our technical team.

### **Terms and conditions**

---

- Guarantee only valid for products bought direct from Abcam or one of our authorized distributors