

Product datasheet

Anti-Angiotensin Converting Enzyme 2 antibody [EPR4436] ab108209

Recombinant RabMAb

3 Images

Overview

Product name	Anti-Angiotensin Converting Enzyme 2 antibody [EPR4436]
Description	Rabbit monoclonal [EPR4436] to Angiotensin Converting Enzyme 2
Host species	Rabbit
Tested applications	Suitable for: WB, IP, IHC-P Unsuitable for: Flow Cyt or ICC
Species reactivity	Reacts with: Human
Immunogen	Synthetic peptide within Human Angiotensin Converting Enzyme 2 aa 750-850. The exact sequence is proprietary.
Positive control	Fetal kidney and Human testis lysates; Human kidney tissue and Human testis tissue
General notes	Mouse, Rat: We have preliminary internal testing data to indicate this antibody may not react with these species. Please contact us for more information.

Our RabMAb[®] technology is a patented hybridoma-based technology for making rabbit monoclonal antibodies. For details on our patents, please refer to [RabMab[®] patents](#)

This product is a recombinant rabbit monoclonal antibody.

Properties

Form	Liquid
Storage instructions	Shipped at 4°C. Upon delivery aliquot and store at -20°C. Avoid repeated freeze / thaw cycles.
Storage buffer	pH: 7.20 Preservative: 0.05% Sodium azide Constituents: 0.1% BSA, 40% Glycerol, 9.85% Tris glycine, 50% Tissue culture supernatant
Purity	Tissue culture supernatant
Clonality	Monoclonal
Clone number	EPR4436
Isotype	IgG

Applications

Our [Abpromise guarantee](#) covers the use of **ab108209** in the following tested applications.

The application notes include recommended starting dilutions; optimal dilutions/concentrations should be determined by the end user.

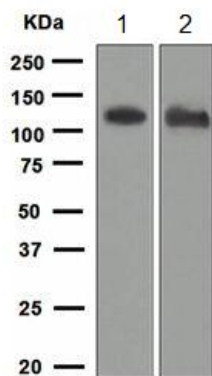
Application	Abreviews	Notes
WB		1/1000 - 1/10000. Predicted molecular weight: 92 kDa.
IP		1/10 - 1/100.
IHC-P		1/100 - 1/250. Antigen retrieval is recommended; heat up to 98 °C, below boiling, and then let cool for 10-20 minutes. The use of an HRP/AP polymerized secondary antibody is recommended.

Application notes Is unsuitable for Flow Cyt or ICC.

Target

Function	Carboxypeptidase which converts angiotensin I to angiotensin 1-9, a peptide of unknown function, and angiotensin II to angiotensin 1-7, a vasodilator. Also able to hydrolyze apelin-13 and dynorphin-13 with high efficiency. May be an important regulator of heart function. In case of human coronaviruses SARS and HCoV-NL63 infections, serve as functional receptor for the spike glycoprotein of both coronaviruses.
Tissue specificity	Expressed in endothelial cells from small and large arteries, and in arterial smooth muscle cells. Expressed in lung alveolar epithelial cells, enterocytes of the small intestine, Leydig cells and Sertoli cells (at protein level). Expressed in heart, kidney, testis, and gastrointestinal system.
Sequence similarities	Belongs to the peptidase M2 family.
Post-translational modifications	N-glycosylation on Asn-90 may limit SARS infectivity.
Cellular localization	Secreted and Cell membrane.

Images



Western blot - Anti-Angiotensin Converting Enzyme 2 antibody [EPR4436] (ab108209)

All lanes : Anti-Angiotensin Converting Enzyme 2 antibody [EPR4436] (ab108209)

Lane 1 : Human fetal kidney lysate

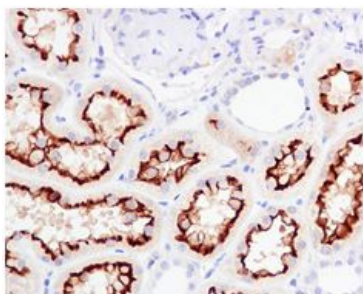
Lane 2 : Human testis lysates

Lysates/proteins at 10 µg per lane.

Secondary

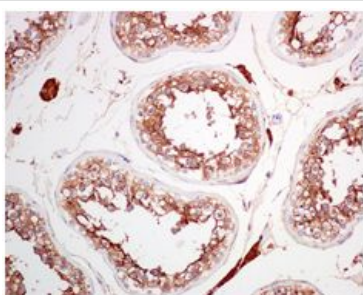
All lanes : HRP labelled goat anti-rabbit at 1/2000 dilution

Predicted band size: 92 kDa



Immunohistochemistry (Formalin/PFA-fixed paraffin-embedded sections) - Anti-Angiotensin Converting Enzyme 2 antibody [EPR4436] (ab108209)

ab108209, at a 1/100 dilution, staining Angiotensin Converting Enzyme 2 in paraffin embedded Human kidney tissue by Immunohistochemistry.



Immunohistochemistry (Formalin/PFA-fixed paraffin-embedded sections) - Anti-Angiotensin Converting Enzyme 2 antibody [EPR4436] (ab108209)

ab108209, at a 1/100 dilution, staining Angiotensin Converting Enzyme 2 in paraffin embedded Human testis tissue by immunohistochemistry.

Please note: All products are "FOR RESEARCH USE ONLY AND ARE NOT INTENDED FOR DIAGNOSTIC OR THERAPEUTIC USE"

Our Abpromise to you: Quality guaranteed and expert technical support

- Replacement or refund for products not performing as stated on the datasheet
- Valid for 12 months from date of delivery
- Response to your inquiry within 24 hours

- We provide support in Chinese, English, French, German, Japanese and Spanish
- Extensive multi-media technical resources to help you
- We investigate all quality concerns to ensure our products perform to the highest standards

If the product does not perform as described on this datasheet, we will offer a refund or replacement. For full details of the Abpromise, please visit <https://www.abcam.com/abpromise> or contact our technical team.

Terms and conditions

- Guarantee only valid for products bought direct from Abcam or one of our authorized distributors