

Product datasheet

Anti-Annexin A11 antibody ab4121

1 Image

Overview

Product name	Anti-Annexin A11 antibody
Description	Goat polyclonal to Annexin A11
Host species	Goat
Specificity	This antibody is expected to recognise all three human isoforms.
Tested applications	Suitable for: WB
Species reactivity	Reacts with: Human
Immunogen	Synthetic peptide: YPGYPPPPGGYPP, corresponding to N terminal amino acids 3-15 of Annexin A11 from N Terminus of the protein sequence according to NP_001148; NP_665875; NP_665876 Run BLAST with ExPASy Run BLAST with NCBI
Positive control	HeLa lysate.

Properties

Form	Liquid
Storage instructions	Shipped at 4°C. Upon delivery aliquot and store at -20°C or -80°C. Avoid repeated freeze / thaw cycles.
Storage buffer	Preservative: 0.02% Sodium Azide Constituents: 0.5% BSA, 5mg/ml Tris, pH 7.3
Purity	Immunogen affinity purified
Purification notes	Purified from goat serum by ammonium sulphate precipitation followed by antigen affinity chromatography using the immunizing peptide.
Clonality	Polyclonal
Isotype	IgG

Applications

Our [Abpromise guarantee](#) covers the use of **ab4121** in the following tested applications.

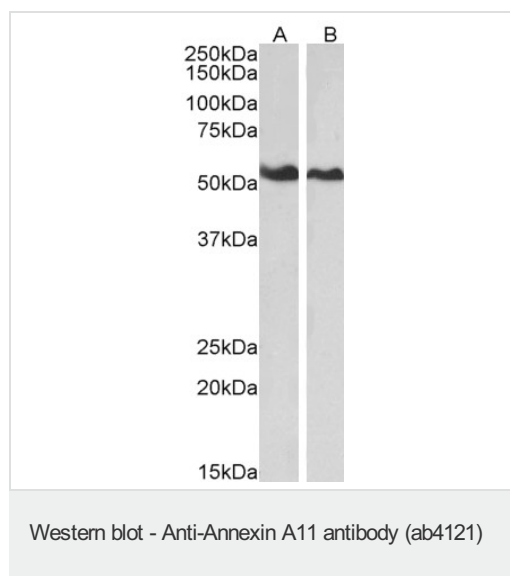
The application notes include recommended starting dilutions; optimal dilutions/concentrations should be determined by the end user.

Application	Abreviews	Notes
WB		Use a concentration of 0.2 - 1 µg/ml. Detects a band of approximately 55 kDa (predicted molecular weight: 58 kDa). Can be blocked with Human Annexin A11 peptide (ab22983) . Approx 55 kDa band seen in HeLa lysate (Predicted MW of approx. 58 kDa according to NP_001148).

Target

Function	Binds specifically to calyculin in a calcium-dependent manner (By similarity). Required for midbody formation and completion of the terminal phase of cytokinesis.
Sequence similarities	Belongs to the annexin family. Contains 4 annexin repeats.
Domain	A pair of annexin repeats may form one binding site for calcium and phospholipid.
Cellular localization	Cytoplasm. Melanosome. Nucleus envelope. Nucleus > nucleoplasm. Cytoplasm > cytoskeleton > spindle. Found throughout the nucleoplasm at interphase and during mitosis concentrates around the mitotic apparatus (By similarity). Elevation of intracellular calcium causes relocalization from the nucleoplasm to the nuclear envelope, with little effect on the cytoplasmic pool. Localization to the nuclear envelope is cell-cycle dependent.

Images



All lanes : Anti-Annexin A11 antibody (ab4121) at 0.01 µg/ml

Lane 1 : HeLa lysates (in RIPA buffer)

Lane 2 : Jurkat lysates (in RIPA buffer)

Lysates/proteins at 35 µg per lane.

Predicted band size: 58 kDa

Observed band size: 54 kDa

Primary incubation was 1 hour.

Detected by chemiluminescence.

Please note: All products are "FOR RESEARCH USE ONLY AND ARE NOT INTENDED FOR DIAGNOSTIC OR THERAPEUTIC USE"

Our Abpromise to you: Quality guaranteed and expert technical support

- Replacement or refund for products not performing as stated on the datasheet
- Valid for 12 months from date of delivery
- Response to your inquiry within 24 hours

- We provide support in Chinese, English, French, German, Japanese and Spanish
- Extensive multi-media technical resources to help you
- We investigate all quality concerns to ensure our products perform to the highest standards

If the product does not perform as described on this datasheet, we will offer a refund or replacement. For full details of the Abpromise, please visit <https://www.abcam.com/abpromise> or contact our technical team.

Terms and conditions

- Guarantee only valid for products bought direct from Abcam or one of our authorized distributors