

Product datasheet

Anti-Annexin A2 antibody - C-terminal ab75933

1 References 2 Images

Overview

Product name	Anti-Annexin A2 antibody - C-terminal
Description	Rabbit polyclonal to Annexin A2 - C-terminal
Host species	Rabbit
Tested applications	Suitable for: IHC-P, WB, ELISA
Species reactivity	Reacts with: Human
Immunogen	KLH-conjugated synthetic peptide selected from the C-terminal region of Human Annexin II
Positive control	A2058 cell line lysate

Properties

Form	Liquid
Storage instructions	Shipped at 4°C. Upon delivery aliquot and store at -20°C. Avoid freeze / thaw cycles.
Storage buffer	Preservative: 0.09% Sodium Azide Constituents: PBS
Purity	Ammonium Sulphate Precipitation
Purification notes	This antibody is prepared by Saturated Ammonium Sulfate (SAS) precipitation followed by dialysis against PBS.
Clonality	Polyclonal
Isotype	IgG

Applications

Our [Abpromise guarantee](#) covers the use of **ab75933** in the following tested applications.

The application notes include recommended starting dilutions; optimal dilutions/concentrations should be determined by the end user.

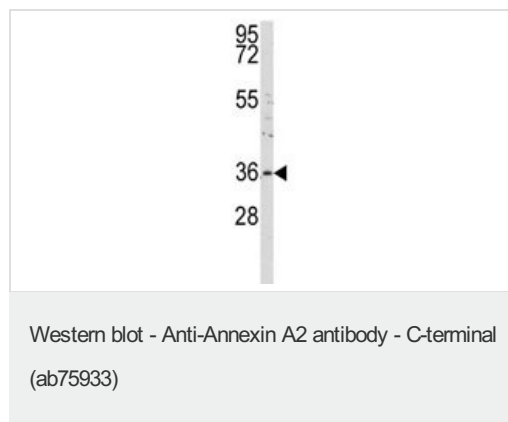
Application	Abreviews	Notes
IHC-P		1/10 - 1/50.
WB		1/50 - 1/100. Predicted molecular weight: 38 kDa.

Application	Abreviews	Notes
ELISA		1/1000.

Target

Function	Calcium-regulated membrane-binding protein whose affinity for calcium is greatly enhanced by anionic phospholipids. It binds two calcium ions with high affinity. May be involved in heat-stress response.
Sequence similarities	Belongs to the annexin family. Contains 4 annexin repeats.
Domain	A pair of annexin repeats may form one binding site for calcium and phospholipid.
Post-translational modifications	Phosphorylation of Tyr-24 enhances heat stress-induced translocation to the cell surface. ISGylated.
Cellular localization	Secreted > extracellular space > extracellular matrix > basement membrane. Melanosome. In the lamina beneath the plasma membrane. Identified by mass spectrometry in melanosome fractions from stage I to stage IV. Translocated from the cytoplasm to the cell surface through a Golgi-independent mechanism.

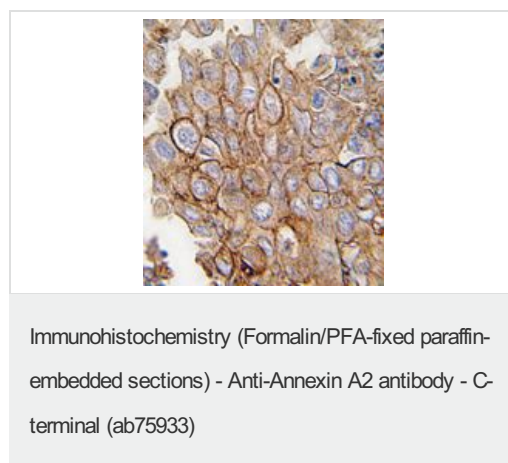
Images



Anti-Annexin A2 antibody - C-terminal (ab75933) at 1/50 dilution + A2058 cell lysate at 35 µg

Predicted band size: 38 kDa

Observed band size: 38 kDa



ab75933 at 1/50 dilution staining Annexin II - C-terminal in human lung carcinoma tissue section by Immunohistochemistry (Formalin/PFA fixed paraffin-embedded sections). A peroxidase conjugated secondary antibody was used followed by DAB staining.

Our Abpromise to you: Quality guaranteed and expert technical support

- Replacement or refund for products not performing as stated on the datasheet
- Valid for 12 months from date of delivery
- Response to your inquiry within 24 hours

- We provide support in Chinese, English, French, German, Japanese and Spanish
- Extensive multi-media technical resources to help you
- We investigate all quality concerns to ensure our products perform to the highest standards

If the product does not perform as described on this datasheet, we will offer a refund or replacement. For full details of the Abpromise, please visit <https://www.abcam.com/abpromise> or contact our technical team.

Terms and conditions

- Guarantee only valid for products bought direct from Abcam or one of our authorized distributors