

Product datasheet

Anti-Apc10 antibody ab106497

★★★★☆ 1 Abreviews 3 Images

Overview

Product name	Anti-Apc10 antibody
Description	Rabbit polyclonal to Apc10
Host species	Rabbit
Specificity	ab106497 is predicted not to cross-react with other APC family members. Two isoforms of Apc10 are known to exist; ab106497 will recognize both isoforms.
Tested applications	Suitable for: ICC/IF, WB, IHC-P
Species reactivity	Reacts with: Mouse, Rat, Human
Immunogen	A 16 amino acid synthetic peptide near the center of Human Apc10 (EAX05052).
Positive control	Mouse heart tissue and lysate

Properties

Form	Liquid
Storage instructions	Shipped at 4°C. Store at 4°C (stable for up to 12 months).
Storage buffer	Preservative: 0.02% Sodium Azide Constituents: PBS
Purity	Immunogen affinity purified
Clonality	Polyclonal
Isotype	IgG

Applications

Our [Abpromise guarantee](#) covers the use of **ab106497** in the following tested applications.

The application notes include recommended starting dilutions; optimal dilutions/concentrations should be determined by the end user.

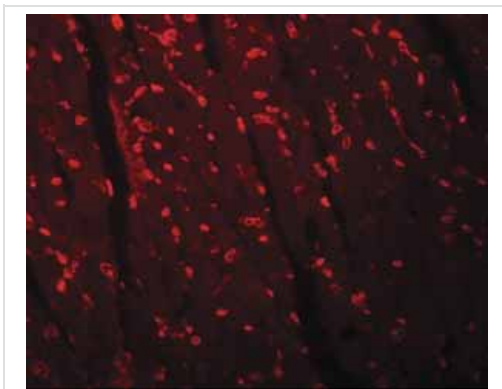
Application	Abreviews	Notes
ICC/IF		Use a concentration of 20 µg/ml.
WB	★★★★☆	Use a concentration of 1 - 2 µg/ml. Predicted molecular weight: 21 kDa.

Application	Abreviews	Notes
IHC-P		Use at an assay dependent concentration.

Target

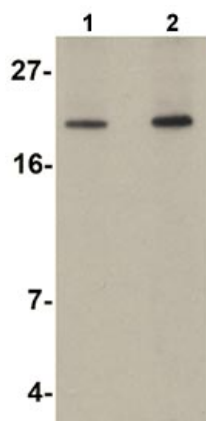
Function	Component of the anaphase promoting complex/cyclosome (APC/C), a cell cycle-regulated E3 ubiquitin ligase that controls progression through mitosis and the G1 phase of the cell cycle. The APC/C complex acts by mediating ubiquitination and subsequent degradation of target proteins: it mainly mediates the formation of 'Lys-11'-linked polyubiquitin chains and, to a lower extent, the formation of 'Lys-48'- and 'Lys-63'-linked polyubiquitin chains.
Pathway	Protein modification; protein ubiquitination.
Sequence similarities	Belongs to the APC10 family. Contains 1 DOC domain.
Form	It localises to Cytosol and nucleoplasm.

Images



Immunofluorescence of Apc10 in mouse heart tissue with ab106497 at 20 ug/mL.

Immunocytochemistry/ Immunofluorescence - Anti-Apc10 antibody (ab106497)



Western blot - Anti-Apc10 antibody (ab106497)

Lane 1 : Anti-Apc10 antibody (ab106497) at

1 µg/ml

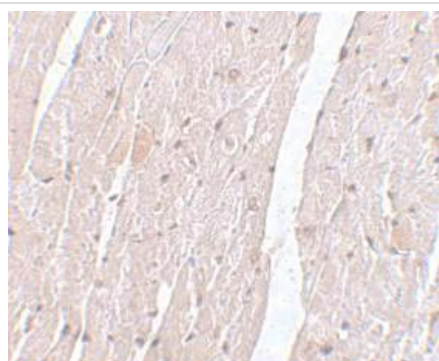
Lane 2 : Anti-Apc10 antibody (ab106497) at

2 µg/ml

All lanes : Mouse heart tissue lysate

Lysates/proteins at 15 µg per lane.

Predicted band size: 21 kDa



Immunohistochemistry (Formalin/PFA-fixed paraffin-embedded sections) - Anti-Apc10 antibody (ab106497)

ab106497, at 5 µg/ml, staining Apc10 in

Mouse heart tissue by Immunohistochemistry.

Please note: All products are "FOR RESEARCH USE ONLY AND ARE NOT INTENDED FOR DIAGNOSTIC OR THERAPEUTIC USE"

Our Abpromise to you: Quality guaranteed and expert technical support

- Replacement or refund for products not performing as stated on the datasheet
- Valid for 12 months from date of delivery
- Response to your inquiry within 24 hours
- We provide support in Chinese, English, French, German, Japanese and Spanish
- Extensive multi-media technical resources to help you
- We investigate all quality concerns to ensure our products perform to the highest standards

If the product does not perform as described on this datasheet, we will offer a refund or replacement. For full details of the Abpromise, please visit <https://www.abcam.com/abpromise> or contact our technical team.

Terms and conditions

- Guarantee only valid for products bought direct from Abcam or one of our authorized distributors