

Product datasheet

Anti-Aspergillus antibody ab20419

3 References 2 Images

Overview

Product name	Anti-Aspergillus antibody
Description	Rabbit polyclonal to Aspergillus
Host species	Rabbit
Tested applications	Suitable for: ELISA, IHC-Fr, IHC-P, Conjugation
Species reactivity	Reacts with: Aspergillus nidulans
Immunogen	Tissue/ cell preparation. Soluble extract from A. fumigatus, A. flavus, A. niger and A. terreus.

Properties

Form	Liquid
Storage instructions	Shipped at 4°C. Upon delivery aliquot and store at -20°C. Avoid freeze / thaw cycles.
Storage buffer	Preservative: 0.1% Sodium Azide Constituents: 0.01M PBS, pH 7.2
Purity	Protein A purified
Purification notes	>95% pure
Clonality	Polyclonal
Isotype	IgG

Applications

Our [Abpromise guarantee](#) covers the use of **ab20419** in the following tested applications.

The application notes include recommended starting dilutions; optimal dilutions/concentrations should be determined by the end user.

Application	Abreviews	Notes
ELISA		Use at an assay dependent concentration.
IHC-Fr		Use at an assay dependent concentration.
IHC-P		Use at an assay dependent concentration.

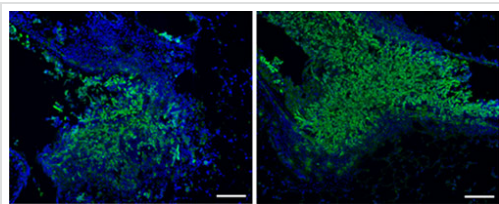
Application	Abreviews	Notes
Conjugation		Use at an assay dependent concentration.

Target

Relevance

The genus *Aspergillus* includes over 185 species. Around 20 species have been reported as causative agents of opportunistic infections in humans. Among these, *Aspergillus fumigatus* is the most commonly isolated species, followed by *Aspergillus flavus*. *Aspergillus fumigatus* is the major cause of aspergillosis. This organism causes both invasive and allergic aspergillosis. *Aspergillus* also produce fungal toxins called mycotoxins. Aflatoxin is produced by *Aspergillus flavus* as it grows on corn and peanuts. The toxin is poisonous to humans by ingestion and causes liver disease. *Aspergillus nidulans* can produce the mycotoxin sterigmatocystin. This toxin has been shown to produce liver and kidney damage in lab animals. *Aspergillus ochraceus*, found in grains, soil and salted food products can produce a kidney toxin called ochratoxin A, which may produce ochratoxicosis in humans. Ochratoxin may also be produced by other *aspergillus* and *penicillium* species. Other toxins that can be produced by this fungus include penicillic acid, xanthomegnin and viomellein. *Aspergillus* infections have a very high mortality rate. Their incidence is growing because of the increased number of immunocompromised patients. Previous to antibodies such as these, special stains were used to identify *aspergillus*. *Aspergillus oryzae* and *Aspergillus niger* are used extensively in industrial scale fermentation to produce enzymes for processing household food and drink products.

Images

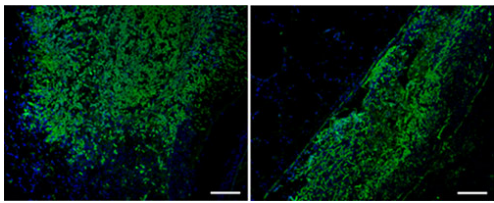


Immunohistochemistry (Frozen sections) - Anti-*Aspergillus* antibody (ab20419)

Image from Grahl N et al., PLoS Pathog. 2011 Jul;7(7):e1002145. Epub 2011 Jul 21. Fig 2.; doi:10.1371/journal.ppat.1002145; July 21, 2011, PLoS Pathog 7(7): e1002145.

ab20419, staining *Aspergillus* (green) in lung tissue from a murine model of corticosteroid-induced invasive pulmonary aspergillosis, by Immunohistochemistry.

Tissue was fixed in cold acetone for 15 min, followed by washing and blocking with normal serum block at RT for 30 min. Sections were incubated overnight at 4°C with primary antibody. An AlexaFluor®488-conjugated goat anti-rabbit IgG (1/00) was used as the secondary antibody.



Immunohistochemistry (Frozen sections) - Anti-Aspergillus antibody (ab20419)

Image from Grahl N et al., PLoS Pathog. 2011 Jul;7(7):e1002145. Epub 2011 Jul 21. Fig 2.; doi:10.1371/journal.ppat.1002145; July 21, 2011, PLoS Pathog 7(7): e1002145.

ab20419, staining Aspergillus (green) in lung tissue from a murine model of chemotherapy-induced invasive pulmonary aspergillosis, by Immunohistochemistry.

Tissue was fixed in cold acetone for 15 min, followed by washing and blocking with normal serum block at RT for 30 min. Sections were incubated overnight at 4°C with primary antibody. An AlexaFluor®488-conjugated goat anti-rabbit IgG (1/00) was used as the secondary antibody.

Please note: All products are "FOR RESEARCH USE ONLY AND ARE NOT INTENDED FOR DIAGNOSTIC OR THERAPEUTIC USE"

Our Abpromise to you: Quality guaranteed and expert technical support

- Replacement or refund for products not performing as stated on the datasheet
- Valid for 12 months from date of delivery
- Response to your inquiry within 24 hours
- We provide support in Chinese, English, French, German, Japanese and Spanish
- Extensive multi-media technical resources to help you
- We investigate all quality concerns to ensure our products perform to the highest standards

If the product does not perform as described on this datasheet, we will offer a refund or replacement. For full details of the Abpromise, please visit <https://www.abcam.com/abpromise> or contact our technical team.

Terms and conditions

- Guarantee only valid for products bought direct from Abcam or one of our authorized distributors