

Product datasheet

Anti-BAFF antibody ab9359

1 Image

Overview

Product name	Anti-BAFF antibody
Description	Mouse monoclonal to BAFF
Host species	Mouse
Tested applications	Suitable for: ELISA, Sandwich ELISA
Species reactivity	Reacts with: Human
Immunogen	Recombinant full length protein (Human).
Positive control	HL60 cell lysate

Properties

Form	Lyophilised:Reconstitute with 500ul distilled water.
Storage instructions	Shipped at 4°C. Store at +4°C short term (1-2 weeks). Upon delivery aliquot. Store at -20°C long term.
Purity	Protein A purified
Clonality	Monoclonal
Isotype	IgG1
Light chain type	kappa

Applications

Our [Abpromise guarantee](#) covers the use of **ab9359** in the following tested applications.

The application notes include recommended starting dilutions; optimal dilutions/concentrations should be determined by the end user.

Application	Abreviews	Notes
ELISA		Use at an assay dependent concentration.
Sandwich ELISA		Use at an assay dependent concentration. Can be paired for Sandwich ELISA with Rabbit polyclonal to BAFF (ab65360) . For sandwich ELISA, use this antibody as Capture at 1µg/ml with ab65360 as Detection.

Target

Function

Cytokine that binds to TNFRSF13B/TACI and TNFRSF17/BCMA. TNFSF13/APRIL binds to the same 2 receptors. Together, they form a 2 ligands -2 receptors pathway involved in the stimulation of B-and T-cell function and the regulation of humoral immunity. A third B-cell specific BAFF-receptor (BAFFR/BR3) promotes the survival of mature B-cells and the B-cell response.

Tissue specificity

Abundantly expressed in peripheral blood Leukocytes and is specifically expressed in monocytes and macrophages. Also found in the spleen, lymph node, bone marrow, T-cells and dendritic cells. A lower expression seen in placenta, heart, lung, fetal liver, thymus, and pancreas.

Sequence similarities

Belongs to the tumor necrosis factor family.

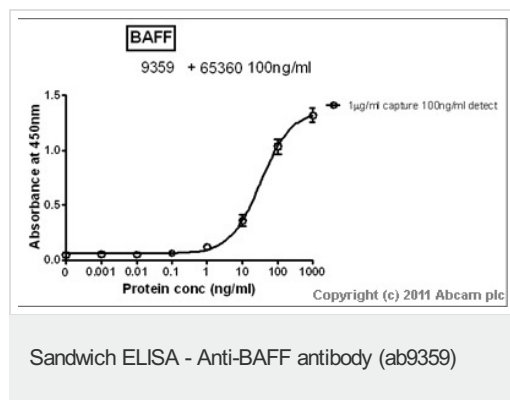
Post-translational modifications

The soluble form derives from the membrane form by proteolytic processing. N-glycosylated.

Cellular localization

Secreted and Cell membrane.

Images



Standard Curve for BAFF (Analyte: [ab79745](#))
dilution range 1pg/ml to 1ug/ml using Capture
Antibody [Mouse monoclonal to BAFF](#)
([ab9359](#)) at 1ug/ml and Detector Antibody
[Rabbit polyclonal to BAFF \(ab65360\)](#) at
0.1ug/ml

Please note: All products are "FOR RESEARCH USE ONLY AND ARE NOT INTENDED FOR DIAGNOSTIC OR THERAPEUTIC USE"

Our Abpromise to you: Quality guaranteed and expert technical support

- Replacement or refund for products not performing as stated on the datasheet
- Valid for 12 months from date of delivery
- Response to your inquiry within 24 hours
- We provide support in Chinese, English, French, German, Japanese and Spanish
- Extensive multi-media technical resources to help you
- We investigate all quality concerns to ensure our products perform to the highest standards

If the product does not perform as described on this datasheet, we will offer a refund or replacement. For full details of the Abpromise, please visit <https://www.abcam.com/abpromise> or contact our technical team.

Terms and conditions

- Guarantee only valid for products bought direct from Abcam or one of our authorized distributors