

Product datasheet

Anti-BCKDH kinase antibody ab111716

1 References 3 Images

Overview

| | |
|----------------------------|---|
| Product name | Anti-BCKDH kinase antibody |
| Description | Rabbit polyclonal to BCKDH kinase |
| Host species | Rabbit |
| Tested applications | Suitable for: WB, IHC-P |
| Species reactivity | Reacts with: Mouse, Human |
| Immunogen | Recombinant fragment, corresponding to a region within amino acids 46-287 of Human BCKDH kinase (AAH07363). |
| Positive control | 293T and Mouse brain whole cell lysates; Human gastric carcinoma tissue. |

Properties

| | |
|-----------------------------|---|
| Form | Liquid |
| Storage instructions | Shipped at 4°C. Upon delivery aliquot and store at -20°C or -80°C. Avoid repeated freeze / thaw cycles. |
| Storage buffer | pH: 7.00 Preservative: 0.01% Thimerosal (merthiolate) Constituents: 1.21% Tris, 0.75% Glycine, 20% Glycerol |
| Purity | Immunogen affinity purified |
| Purification notes | ab111716 is purified by antigen-affinity chromatography. |
| Clonality | Polyclonal |
| Isotype | IgG |

Applications

Our [Abpromise guarantee](#) covers the use of **ab111716** in the following tested applications.

The application notes include recommended starting dilutions; optimal dilutions/concentrations should be determined by the end user.

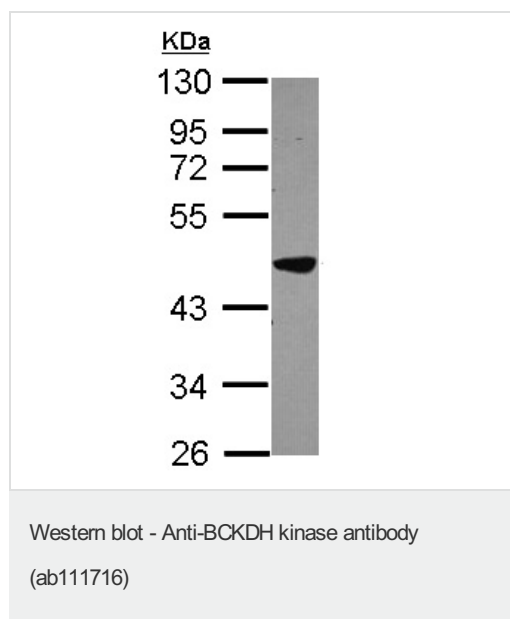
| Application | Abreviews | Notes |
|-------------|-----------|---|
| WB | | 1/500 - 1/3000. Predicted molecular weight: 46 kDa. |

| Application | Abreviews | Notes |
|-------------|-----------|--|
| IHC-P | | 1/100 - 1/500. Perform heat mediated antigen retrieval with citrate buffer pH 6 before commencing with IHC staining protocol. or Tris-EDTA buffer (PH8.0) |

Target

| | |
|---|---|
| Function | Catalyzes the phosphorylation and inactivation of the branched-chain alpha-ketoacid dehydrogenase complex, the key regulatory enzyme of the valine, leucine and isoleucine catabolic pathways. Key enzyme that regulate the activity state of the BCKD complex. |
| Tissue specificity | Ubiquitous. |
| Sequence similarities | Belongs to the PDK/BCKDK protein kinase family. Contains 1 histidine kinase domain. |
| Post-translational modifications | Autophosphorylated. |
| Cellular localization | Mitochondrion matrix. |

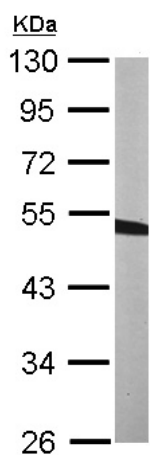
Images



Anti-BCKDH kinase antibody (ab111716) at 1/1000 dilution + 293T whole cell lysate at 30 µg

Predicted band size: 46 kDa

10% SDS-PAGE.

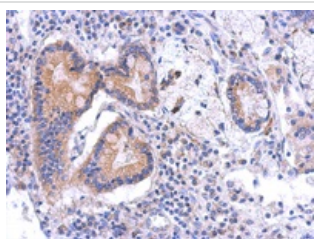


Western blot - Anti-BCKDH kinase antibody
(ab111716)

Anti-BCKDH kinase antibody (ab111716) at
1/1000 dilution + Mouse brain whole cell lysate
at 50 μ g

Predicted band size: 46 kDa

10% SDS-PAGE.



Immunohistochemistry (Formalin/PFA-fixed paraffin-
embedded sections) - Anti-BCKDH kinase antibody
(ab111716)

ab111716 at 1/500 dilution staining BCKDH
kinase in Formalin-fixed, paraffin-embedded
Human Gastric carcinoma tissue by
Immunohistochemistry.

Please note: All products are "FOR RESEARCH USE ONLY AND ARE NOT INTENDED FOR DIAGNOSTIC OR THERAPEUTIC USE"

Our Abpromise to you: Quality guaranteed and expert technical support

- Replacement or refund for products not performing as stated on the datasheet
- Valid for 12 months from date of delivery
- Response to your inquiry within 24 hours
- We provide support in Chinese, English, French, German, Japanese and Spanish
- Extensive multi-media technical resources to help you
- We investigate all quality concerns to ensure our products perform to the highest standards

If the product does not perform as described on this datasheet, we will offer a refund or replacement. For full details of the Abpromise, please visit <https://www.abcam.com/abpromise> or contact our technical team.

Terms and conditions

- Guarantee only valid for products bought direct from Abcam or one of our authorized distributors