

## Product datasheet

# Anti-BCNP antibody ab113755

★★★★☆ 1 Abreviews 1 Image

### Overview

---

<b>Product name</b>	Anti-BCNP antibody
<b>Description</b>	Rabbit polyclonal to BCNP
<b>Host species</b>	Rabbit
<b>Tested applications</b>	<b>Suitable for:</b> WB
<b>Species reactivity</b>	<b>Reacts with:</b> Human <b>Predicted to work with:</b> Macaque monkey, Gorilla, Orangutan
<b>Immunogen</b>	Synthetic peptide conjugated to KLH derived from within residues 1 - 100 of Human BCNP. Read Abcam's proprietary immunogen policy
<b>Positive control</b>	This antibody gave a positive signal in the following tissue lysates: Human Bone Marrow; Human Tonsil; Human Lymph Node.

### Properties

---

<b>Form</b>	Liquid
<b>Storage instructions</b>	Shipped at 4°C. Store at +4°C short term (1-2 weeks). Upon delivery aliquot. Store at -20°C or -80°C. Avoid freeze / thaw cycle.
<b>Storage buffer</b>	pH: 7.40 Preservative: 0.02% Sodium azide Constituent: PBS Note: Batches of this product that have a concentration < 1mg/ml may have BSA added as a stabilising agent. If you would like information about the formulation of a specific lot, please contact our scientific support team who will be happy to help.
<b>Purity</b>	Immunogen affinity purified
<b>Clonality</b>	Polyclonal
<b>Isotype</b>	IgG

### Applications

---

Our [Abpromise guarantee](#) covers the use of **ab113755** in the following tested applications.

The application notes include recommended starting dilutions; optimal dilutions/concentrations should be determined by the end user.

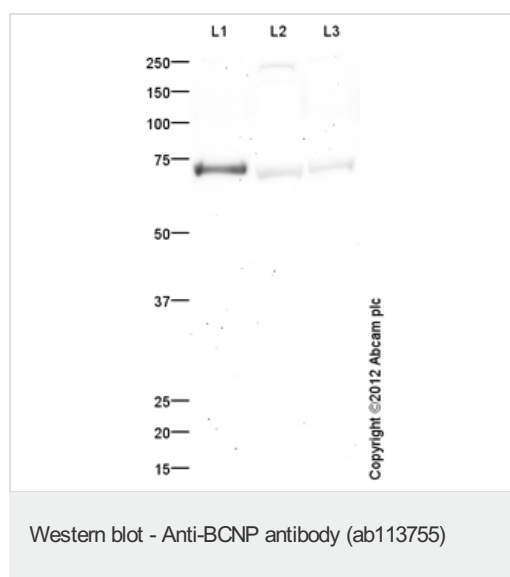
Application	Abreviews	Notes
WB	★★★★☆	Use a concentration of 1 µg/ml. Detects a band of approximately 74 kDa (predicted molecular weight: 77 kDa).

## Target

**Tissue specificity** Specifically expressed in B-lymphocytes.

**Sequence similarities** Belongs to the Niban family.

## Images



**All lanes** : Anti-BCNP antibody (ab113755)  
at 1 µg/ml

**Lane 1** : Bone Marrow (Human) Tissue  
Lysate - adult normal tissue

**Lane 2** : Tonsil (Human) Tissue Lysate

**Lane 3** : Human lymph node tissue lysate -  
total protein ([ab29871](#))

Lysates/proteins at 10 µg per lane.

### Secondary

**All lanes** : Goat Anti-Rabbit IgG H&L (HRP)  
preadsorbed ([ab97080](#)) at 1/5000 dilution

Developed using the ECL technique.

Performed under reducing conditions.

**Predicted band size:** 77 kDa

**Observed band size:** 74 kDa

**Additional bands at:** 241 kDa. We are  
unsure as to the identity of these extra bands.

**Exposure time:** 20 minutes

**Please note:** All products are "FOR RESEARCH USE ONLY AND ARE NOT INTENDED FOR DIAGNOSTIC OR THERAPEUTIC USE"

- Replacement or refund for products not performing as stated on the datasheet
- Valid for 12 months from date of delivery
- Response to your inquiry within 24 hours
  
- We provide support in Chinese, English, French, German, Japanese and Spanish
- Extensive multi-media technical resources to help you
- We investigate all quality concerns to ensure our products perform to the highest standards

If the product does not perform as described on this datasheet, we will offer a refund or replacement. For full details of the Abpromise, please visit <https://www.abcam.com/abpromise> or contact our technical team.

### **Terms and conditions**

---

- Guarantee only valid for products bought direct from Abcam or one of our authorized distributors