


Product datasheet

Anti-BDH2 antibody ab77560

1 Image

Overview

Product name	Anti-BDH2 antibody
Description	Goat polyclonal to BDH2
Host species	Goat
Tested applications	Suitable for: WB, ELISA
Species reactivity	Reacts with: Human Predicted to work with: Mouse, Rat, Cow 
Immunogen	Synthetic peptide: C-TK ³ KKQIDQFANE , corresponding to internal sequence amino acids 60-71 of human BDH2 (NP_064524.3). Run BLAST with Run BLAST with
Positive control	Human brain (cerebellum), kidney and liver lysates.

Properties

Form	Liquid
Storage instructions	Shipped at 4°C. Upon delivery aliquot and store at -20°C. Avoid repeated freeze / thaw cycles.
Storage buffer	Preservative: 0.02% Sodium Azide Constituents: 0.5% BSA, Tris buffered saline, pH 7.3
Purity	Immunogen affinity purified
Purification notes	ab77560 was purified from goat serum by ammonium sulphate precipitation followed by antigen affinity chromatography using the immunizing peptide.
Clonality	Polyclonal
Isotype	IgG

Applications

Our [Abpromise guarantee](#) covers the use of **ab77560** in the following tested applications.

The application notes include recommended starting dilutions; optimal dilutions/concentrations should be determined by the end user.

Application	Abreviews	Notes
WB		
ELISA		

Application notes

Peptide ELISA: Use at an assay dependent dilution. Antibody detection limit dilution 1/64,000.
 WB: Use at a concentration of 0.3 - 1 µg/ml. Predicted molecular weight: 27 kDa.

Not yet tested in other applications.
 Optimal dilutions/concentrations should be determined by the end user.

Target

Function

Dehydrogenase that mediates the formation of 2,5-dihydroxybenzoic acid (2,5-DHBA), a siderophore that shares structural similarities with bacterial enterobactin and associates with LCN2, thereby playing a key role in iron homeostasis and transport. Also acts as a 3-hydroxybutyrate dehydrogenase.

Pathway

Siderophore biosynthesis.

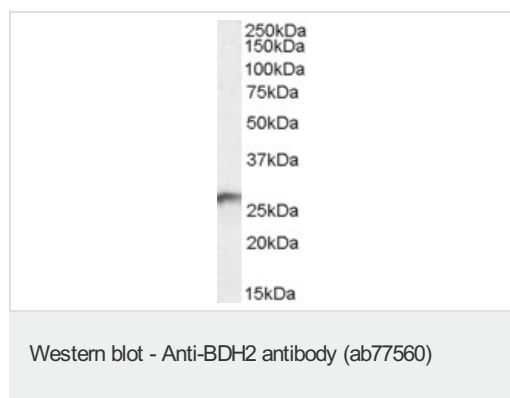
Sequence similarities

Belongs to the short-chain dehydrogenases/reductases (SDR) family.

Cellular localization

Cytoplasm.

Images



Anti-BDH2 antibody (ab77560) at 0.3 µg/ml + human kidney lysate (in RIPA buffer) at 35 µg

Developed using the ECL technique.

Predicted band size: 27 kDa

Observed band size: 27 kDa

Exposure time: 1 hour

Please note: All products are "FOR RESEARCH USE ONLY AND ARE NOT INTENDED FOR DIAGNOSTIC OR THERAPEUTIC USE"

Our Abpromise to you: Quality guaranteed and expert technical support

- Replacement or refund for products not performing as stated on the datasheet
- Valid for 12 months from date of delivery
- Response to your inquiry within 24 hours
- We provide support in Chinese, English, French, German, Japanese and Spanish
- Extensive multi-media technical resources to help you

- We investigate all quality concerns to ensure our products perform to the highest standards

If the product does not perform as described on this datasheet, we will offer a refund or replacement. For full details of the Abpromise, please visit <https://www.abcam.com/abpromise> or contact our technical team.

Terms and conditions

- Guarantee only valid for products bought direct from Abcam or one of our authorized distributors