


Product datasheet

Anti-BIG1 antibody ab95147

1 Image

Overview

Product name	Anti-BIG1 antibody
Description	Rabbit polyclonal to BIG1
Host species	Rabbit
Tested applications	Suitable for: IHC-P
Species reactivity	Reacts with: Human Predicted to work with: Cow, Dog, Pig, Chimpanzee, Rhesus monkey, Gorilla, Chinese hamster, Orangutan 
Immunogen	Synthetic peptide, corresponding to a region within C terminal amino acids 1800-1849 of Human BIG1 (NP_006412.2)
Positive control	Human Breast Carcinoma and Prostate Carcinoma

Properties

Form	Liquid
Storage instructions	Shipped at 4°C. Upon delivery aliquot and store at -20°C. Avoid freeze / thaw cycles.
Storage buffer	Preservative: 0.09% Sodium Azide Constituents: 0.1% BSA, Tris buffered saline
Purity	Immunogen affinity purified
Purification notes	ab95147 was affinity purified using an epitope specific to BIG1 immobilized on solid support.
Clonality	Polyclonal
Isotype	IgG

Applications

Our [Abpromise guarantee](#) covers the use of **ab95147** in the following tested applications.

The application notes include recommended starting dilutions; optimal dilutions/concentrations should be determined by the end user.

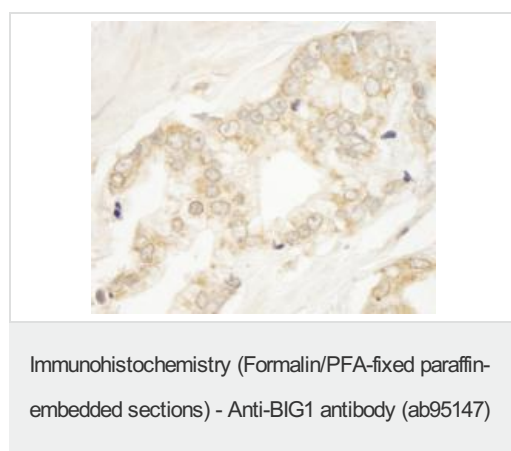
Application	Abreviews	Notes
-------------	-----------	-------

Application	Abreviews	Notes
IHC-P		1/100 - 1/500. Epitope exposure is recommended, with tris-EDTA pH 9.0 buffer to enhance staining. Likely to work with frozen sections.

Target

Relevance	BIG1 is a brefeldin A-inhibited guanine nucleotide exchange protein (GEP) that activates ADP-ribosylation factor (ARF) GTPases and functions in vesicle formation from Golgi membranes.
Cellular localization	Cytoplasmic, Golgi Apparatus and Nuclear

Images



Formalin-fixed, paraffin-embedded Human prostate carcinoma tissue labelled with ab95147 at 1/250 dilution followed by DAB detection. Epitope retrieval was performed.

Please note: All products are "FOR RESEARCH USE ONLY AND ARE NOT INTENDED FOR DIAGNOSTIC OR THERAPEUTIC USE"

Our Abpromise to you: Quality guaranteed and expert technical support

- Replacement or refund for products not performing as stated on the datasheet
- Valid for 12 months from date of delivery
- Response to your inquiry within 24 hours
- We provide support in Chinese, English, French, German, Japanese and Spanish
- Extensive multi-media technical resources to help you
- We investigate all quality concerns to ensure our products perform to the highest standards

If the product does not perform as described on this datasheet, we will offer a refund or replacement. For full details of the Abpromise, please visit <https://www.abcam.com/abpromise> or contact our technical team.

Terms and conditions

- Guarantee only valid for products bought direct from Abcam or one of our authorized distributors