

Product datasheet

Anti-CXCR6 antibody ab8023

★★★★☆ 1 Abreviews 4 References 3 Images

Overview

Product name	Anti-CXCR6 antibody
Description	Rabbit polyclonal to CXCR6
Host species	Rabbit
Tested applications	Suitable for: ICC/IF, Flow Cyt, IHC-P, WB
Species reactivity	Reacts with: Human
Immunogen	Synthetic peptide, corresponding to amino acids 11-25 of Human Bonzo.
Positive control	Human spleen tissue lysate

Properties

Form	Liquid
Storage instructions	Shipped at 4°C. Store at +4°C.
Storage buffer	Preservative: 0.02% Sodium azide
Purity	Affinity purified
Clonality	Polyclonal
Isotype	IgG

Applications

Our [Abpromise guarantee](#) covers the use of **ab8023** in the following tested applications.

The application notes include recommended starting dilutions; optimal dilutions/concentrations should be determined by the end user.

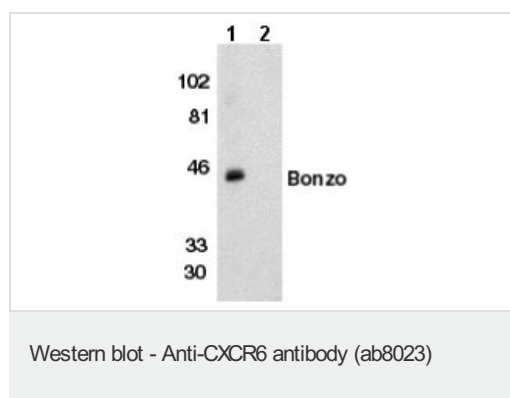
Application	Abreviews	Notes
ICC/IF		Use a concentration of 20 µg/ml.
Flow Cyt	★★★★☆	Use at an assay dependent concentration. ab171870 - Rabbit polyclonal IgG, is suitable for use as an isotype control with this antibody.
IHC-P		Use a concentration of 20 µg/ml.

Application	Abreviews	Notes
WB		1/500. Predicted molecular weight: 44 kDa.Can be blocked with CXCR6 peptide (ab8390) .

Target

Function	Receptor for the C-X-C chemokine CXCL16. Used as a coreceptor by SIVs and by strains of HIV-2 and m-tropic HIV-1.
Tissue specificity	Expressed in lymphoid tissues and activated T cells.
Sequence similarities	Belongs to the G-protein coupled receptor 1 family.
Cellular localization	Cell membrane.

Images



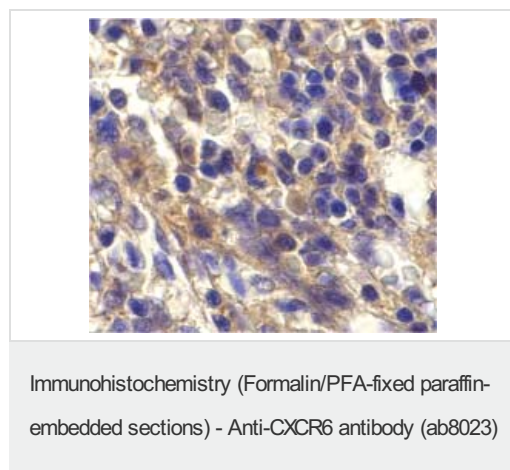
All lanes : Anti-CXCR6 antibody (ab8023) at 1/500 dilution

Lane 1 : human spleen tissue lysate with absence of peptide

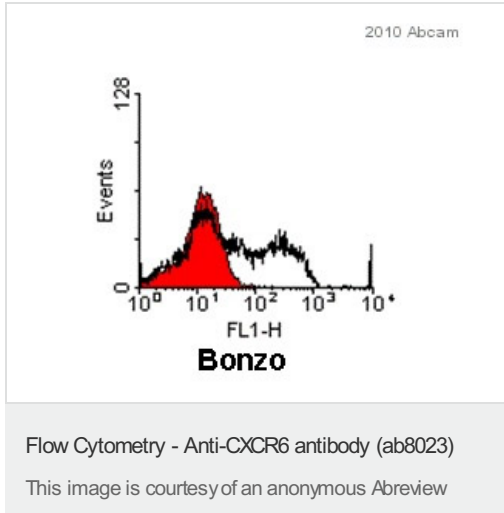
Lane 2 : human spleen tissue lysate with presence of peptide

Predicted band size: 44 kDa

Observed band size: 44 kDa



ab8023 at 20µg/ml staining CXCR6 in human spleen cells by IHC



ab8023 staining CXCR6 in the Human MCF7 cell line by Flow Cytometry. Samples were incubated with primary antibody (1/50 in PBS) for 20 minutes at 4°C. A FITC-conjugated Pig anti-rabbit IgG polyclonal (1/50) was used as the secondary antibody. The gating strategy was live cells.

Please note: All products are "FOR RESEARCH USE ONLY AND ARE NOT INTENDED FOR DIAGNOSTIC OR THERAPEUTIC USE"

Our Abpromise to you: Quality guaranteed and expert technical support

- Replacement or refund for products not performing as stated on the datasheet
- Valid for 12 months from date of delivery
- Response to your inquiry within 24 hours
- We provide support in Chinese, English, French, German, Japanese and Spanish
- Extensive multi-media technical resources to help you
- We investigate all quality concerns to ensure our products perform to the highest standards

If the product does not perform as described on this datasheet, we will offer a refund or replacement. For full details of the Abpromise, please visit <https://www.abcam.com/abpromise> or contact our technical team.

Terms and conditions

- Guarantee only valid for products bought direct from Abcam or one of our authorized distributors