

Product datasheet

Anti-Bovine Papilloma Virus E2 antibody [1E4] ab980

[2 References](#) [1 Image](#)

Overview

Product name	Anti-Bovine Papilloma Virus E2 antibody [1E4]
Description	Mouse monoclonal [1E4] to Bovine Papilloma Virus E2
Host species	Mouse
Tested applications	Suitable for: WB, IP, ICC/IF
Species reactivity	Reacts with: Cow
Immunogen	Mapped to amino acids 250-280.
Epitope	Not Determined.

Properties

Form	Liquid
Storage instructions	Shipped at 4°C. Store at +4°C short term (1-2 weeks). Upon delivery aliquot. Store at -20°C or -80°C. Avoid freeze / thaw cycle.
Storage buffer	Constituent: 50% Glycerol
Purity	Protein A purified
Clonality	Monoclonal
Clone number	1E4
Isotype	IgG1

Applications

Our [Abpromise guarantee](#) covers the use of **ab980** in the following tested applications.

The application notes include recommended starting dilutions; optimal dilutions/concentrations should be determined by the end user.

Application	Abreviews	Notes
WB		
IP		
ICC/IF		

Application notes

IF (ICC): 1/500- 1/1000 (1hr, RT). Dilute in a diluent containing 1% BSA in PBS.

IP: Use at an assay dependent dilution to isolate E2Tag-tagged proteins and associated proteins/protein binding partners. Use protein G-agarose.

WB: 1/1000 - 1/5000 (1hr, RT). Dilute in a diluent containing 2% non-fat dry milk in TBST. (Background can be reduced by adding NaCl up to a concentration of 1.5 M.)Incubate
Not tested in other applications.

Optimal dilutions/concentrations should be determined by the end user.

Target

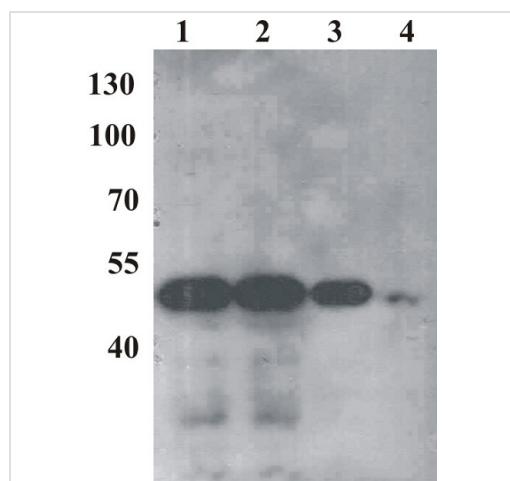
Relevance

The bovine papilloma virus E2 protein is the master regulator of papillomavirus replication and transcription. Binds to the E2RE response element (5'-ACCNNNNNNGGT-3') present in multiple copies in the regulatory region. Can either activate or repress transcription depending on E2RE's position with regards to proximal promoter elements. Repression occurs by sterically hindering the assembly of the transcription initiation complex. The E1-E2 complex binds to the origin of DNA replication.

Cellular localization

Host cell nucleus

Images



Western blot - Anti-Bovine Papilloma Virus E2 antibody [1E4] (ab980)

All lanes : Anti-Bovine Papilloma Virus E2 antibody [1E4] (ab980)

Lane 1 : Purified recombinant Bovine Papillomavirus E2 protein at 15000 μ g

Lane 2 : Purified recombinant Bovine Papillomavirus E2 protein at 10000 μ g

Lane 3 : Purified recombinant Bovine Papillomavirus E2 protein at 5000 μ g

Lane 4 : Purified recombinant Bovine Papillomavirus E2 protein at 1000 μ g

Predicted band size: 45 kDa

Please note: All products are "FOR RESEARCH USE ONLY AND ARE NOT INTENDED FOR DIAGNOSTIC OR THERAPEUTIC USE"

Our Promise to you: Quality guaranteed and expert technical support

- Replacement or refund for products not performing as stated on the datasheet
- Valid for 12 months from date of delivery
- Response to your inquiry within 24 hours
- We provide support in Chinese, English, French, German, Japanese and Spanish
- Extensive multi-media technical resources to help you
- We investigate all quality concerns to ensure our products perform to the highest standards

If the product does not perform as described on this datasheet, we will offer a refund or replacement. For full details of the Abpromise, please visit <https://www.abcam.com/abpromise> or contact our technical team.

Terms and conditions

- Guarantee only valid for products bought direct from Abcam or one of our authorized distributors