

Product datasheet

Anti-C13orf8 antibody ab48703

[2 Images](#)

Overview

Product name	Anti-C13orf8 antibody
Description	Rabbit polyclonal to C13orf8
Host species	Rabbit
Specificity	This antibody recognizes C13orf8
Tested applications	Suitable for: WB, IHC-P
Species reactivity	Reacts with: Human Predicted to work with: Mouse, Rat
Immunogen	A region within synthetic peptide: PAASPESRKS ARTTSPEPRK PSPSESPEPW KPFPAVSPEP RRPAPAVSPG, corresponding to internal sequence amino acids 261-310 of Human C13orf8 Run BLAST with ExPASy Run BLAST with NCBI
Positive control	Daudi cell lysate. Human skeletal muscle cells.

Properties

Form	Liquid
Storage instructions	Shipped at 4°C. Upon delivery aliquot and store at -20°C. Avoid freeze / thaw cycles.
Storage buffer	Preservative: 0.09% Sodium azide Constituents: 2% Sucrose, PBS
Purity	Protein A purified
Clonality	Polyclonal
Isotype	IgG

Applications

Our [Abpromise guarantee](#) covers the use of **ab48703** in the following tested applications.

The application notes include recommended starting dilutions; optimal dilutions/concentrations should be determined by the end user.

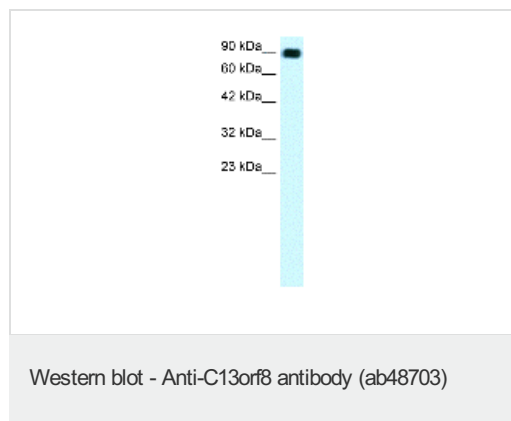
Application	Abreviews	Notes

Application	Abreviews	Notes
WB		Use a concentration of 1 µg/ml. Detects a band of approximately 89 kDa (predicted molecular weight: 89 kDa). Good results were obtained when blocked with 5% non-fat dry milk in 0.05% PBS-T.
IHC-P		Use at an assay dependent concentration.

Target

Function	Required for proper alignment of chromosomes at metaphase and their accurate segregation during mitosis. Involved in the maintenance of spindle microtubules attachment to the kinetochore during sister chromatid biorientation. May recruit CENPE and CENPF to the kinetochore.
Sequence similarities	Contains 1 C2H2-type zinc finger.
Post-translational modifications	Phosphorylated by CDK1. Mitotic phosphorylation is required for the attachment of spindle microtubules to the kinetochore.
Cellular localization	Nucleus. Chromosome. Chromosome > centromere > kinetochore. Cytoplasm > cytoskeleton > spindle.

Images



Anti-C13orf8 antibody (ab48703) at 0.25 µg/ml + Daudi cell lysate at 10 µg with 5% skimmed milk in PBS

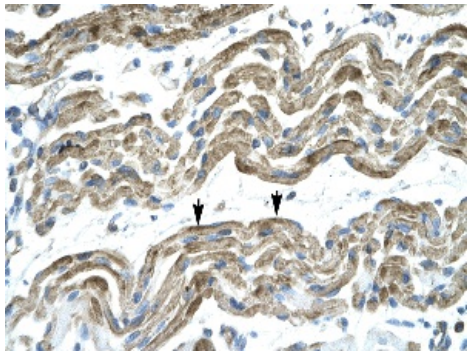
Secondary

HRP conjugated anti-Rabbit IgG at 1/50000 dilution

Predicted band size: 89 kDa

Observed band size: 89 kDa

Gel concentration: 12%



ab48703 (4-8 μ g/ml) staining of Human muscle tissue cells (10 μ g) with positively stained skeletal muscle cells (arrows). Magnification: x400

Immunohistochemistry (Formalin/PFA-fixed paraffin-embedded sections) - Anti-C13orf8 antibody (ab48703)

Please note: All products are "FOR RESEARCH USE ONLY AND ARE NOT INTENDED FOR DIAGNOSTIC OR THERAPEUTIC USE"

Our Abpromise to you: Quality guaranteed and expert technical support

- Replacement or refund for products not performing as stated on the datasheet
- Valid for 12 months from date of delivery
- Response to your inquiry within 24 hours
- We provide support in Chinese, English, French, German, Japanese and Spanish
- Extensive multi-media technical resources to help you
- We investigate all quality concerns to ensure our products perform to the highest standards

If the product does not perform as described on this datasheet, we will offer a refund or replacement. For full details of the Abpromise, please visit <https://www.abcam.com/abpromise> or contact our technical team.

Terms and conditions

- Guarantee only valid for products bought direct from Abcam or one of our authorized distributors