

## Product datasheet

# Anti-C1s antibody [M81] ab81707

★★★★☆ 1 Abreviews 1 References 1 Image

### Overview

---

<b>Product name</b>	Anti-C1s antibody [M81]
<b>Description</b>	Mouse monoclonal [M81] to C1s
<b>Host species</b>	Mouse
<b>Specificity</b>	ab81707 reacts around the binding site of C1s and reacts with both active and inactive C1s.
<b>Tested applications</b>	<b>Suitable for:</b> ICC/IF, WB, IP, ELISA, IHC-P, IHC-Fr, Functional Studies, Flow Cyt
<b>Species reactivity</b>	<b>Reacts with:</b> Human
<b>Immunogen</b>	The details of the immunogen for this antibody are not available.
<b>Epitope</b>	ab81707 reacts with an epitope on human C protein activated C1s, a subcomponent of the first component of C (C1). The epitope recognized by ab81707 is domain IV and/or V of the gamma domain of activated C1s.
<b>Positive control</b>	IHC-P: Human liver melanoma cells.

### Properties

---

<b>Form</b>	Liquid
<b>Storage instructions</b>	Shipped at 4°C. Upon delivery aliquot and store at -20°C. Avoid freeze / thaw cycles.
<b>Storage buffer</b>	Preservative: None Constituents: 0.1% BSA, PBS
<b>Purification notes</b>	ab81707 is a purified, 0.2 µm filtered solution.
<b>Clonality</b>	Monoclonal
<b>Clone number</b>	M81
<b>Isotype</b>	IgG1

### Applications

---

Our [Abpromise guarantee](#) covers the use of **ab81707** in the following tested applications.

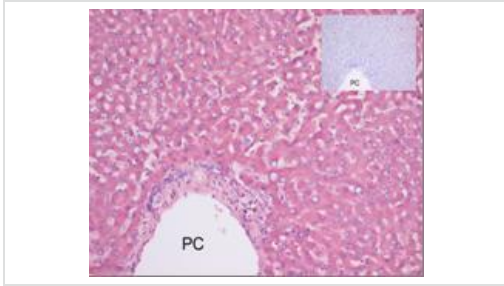
The application notes include recommended starting dilutions; optimal dilutions/concentrations should be determined by the end user.

Application	Abreviews	Notes
ICC/IF		Use at an assay dependent concentration.
WB		1/10 - 1/50. Predicted molecular weight: 55 kDa.
IP		Use at an assay dependent concentration.
ELISA		Use at an assay dependent concentration.
IHC-P	★★★★☆	Use at an assay dependent concentration.
IHC-Fr		1/10 - 1/50.
Functional Studies		Use at an assay dependent concentration.
Flow Cyt		1/10 - 1/50. <a href="#">ab170190</a> - Mouse monoclonal IgG1, is suitable for use as an isotype control with this antibody.

## Target

<b>Function</b>	C1s B chain is a serine protease that combines with C1q and C1s to form C1, the first component of the classical pathway of the complement system. C1r activates C1s so that it can, in turn, activate C2 and C4.
<b>Involvement in disease</b>	Defects in C1S are the cause of complement component C1s deficiency (C1SD) [MIM:613783]. A rare defect resulting in C1 deficiency and impaired activation of the complement classical pathway. C1 deficiency generally leads to severe immune complex disease with features of systemic lupus erythematosus and glomerulonephritis.
<b>Sequence similarities</b>	Belongs to the peptidase S1 family. Contains 2 CUB domains. Contains 1 EGF-like domain. Contains 1 peptidase S1 domain. Contains 2 Sushi (CCP/SCR) domains.
<b>Post-translational modifications</b>	The iron and 2-oxoglutarate dependent 3-hydroxylation of aspartate and asparagine is (R) stereospecific within EGF domains.

## Images



ab81707, at a dilution of 1/50, staining paraffin embedded human liver melanoma cells by Immunohistochemistry. Insert is isotype control.

Immunohistochemistry (Formalin/PFA-fixed paraffin-embedded sections) - Anti-C1s antibody [M81] (ab81707)

**Please note:** All products are "FOR RESEARCH USE ONLY AND ARE NOT INTENDED FOR DIAGNOSTIC OR THERAPEUTIC USE"

### **Our Abpromise to you: Quality guaranteed and expert technical support**

- Replacement or refund for products not performing as stated on the datasheet
- Valid for 12 months from date of delivery
- Response to your inquiry within 24 hours
- We provide support in Chinese, English, French, German, Japanese and Spanish
- Extensive multi-media technical resources to help you
- We investigate all quality concerns to ensure our products perform to the highest standards

If the product does not perform as described on this datasheet, we will offer a refund or replacement. For full details of the Abpromise, please visit <https://www.abcam.com/abpromise> or contact our technical team.

### **Terms and conditions**

- Guarantee only valid for products bought direct from Abcam or one of our authorized distributors